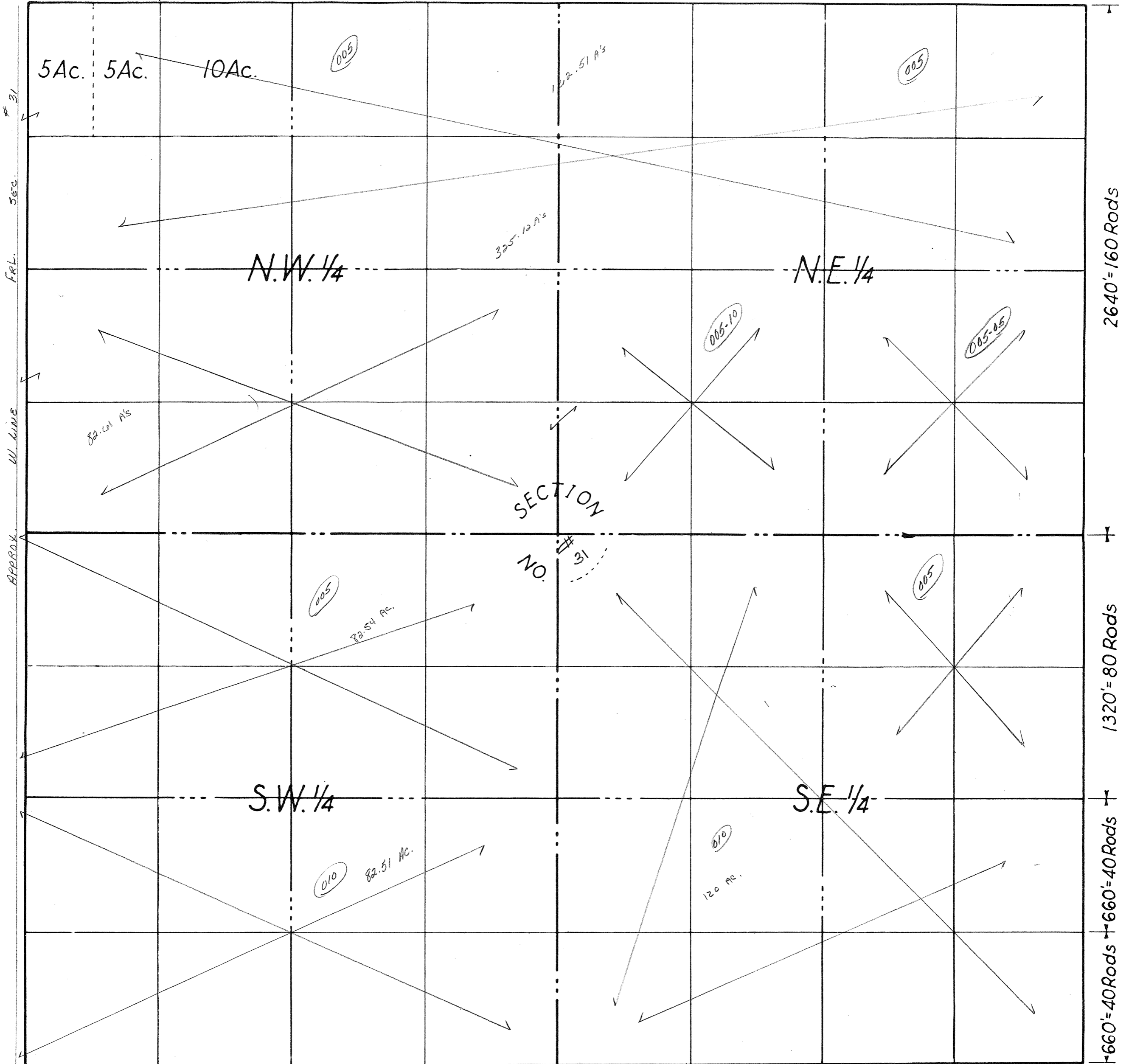


660' = 40 Rods 660' = 40 Rods

1320' = 80 Rods

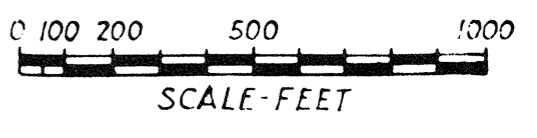
2640' = 160 Rods



31
SEC.
FRL.
W. LINE
APPROX.

2640' = 160 Rods
1320' = 80 Rods
660' = 40 Rods

COUNTY Adams MICH.
 TOWNSHIP Adams Twp
 RANGE T19N R3E
 AREA Sec # 31



NO. _____

DATE _____