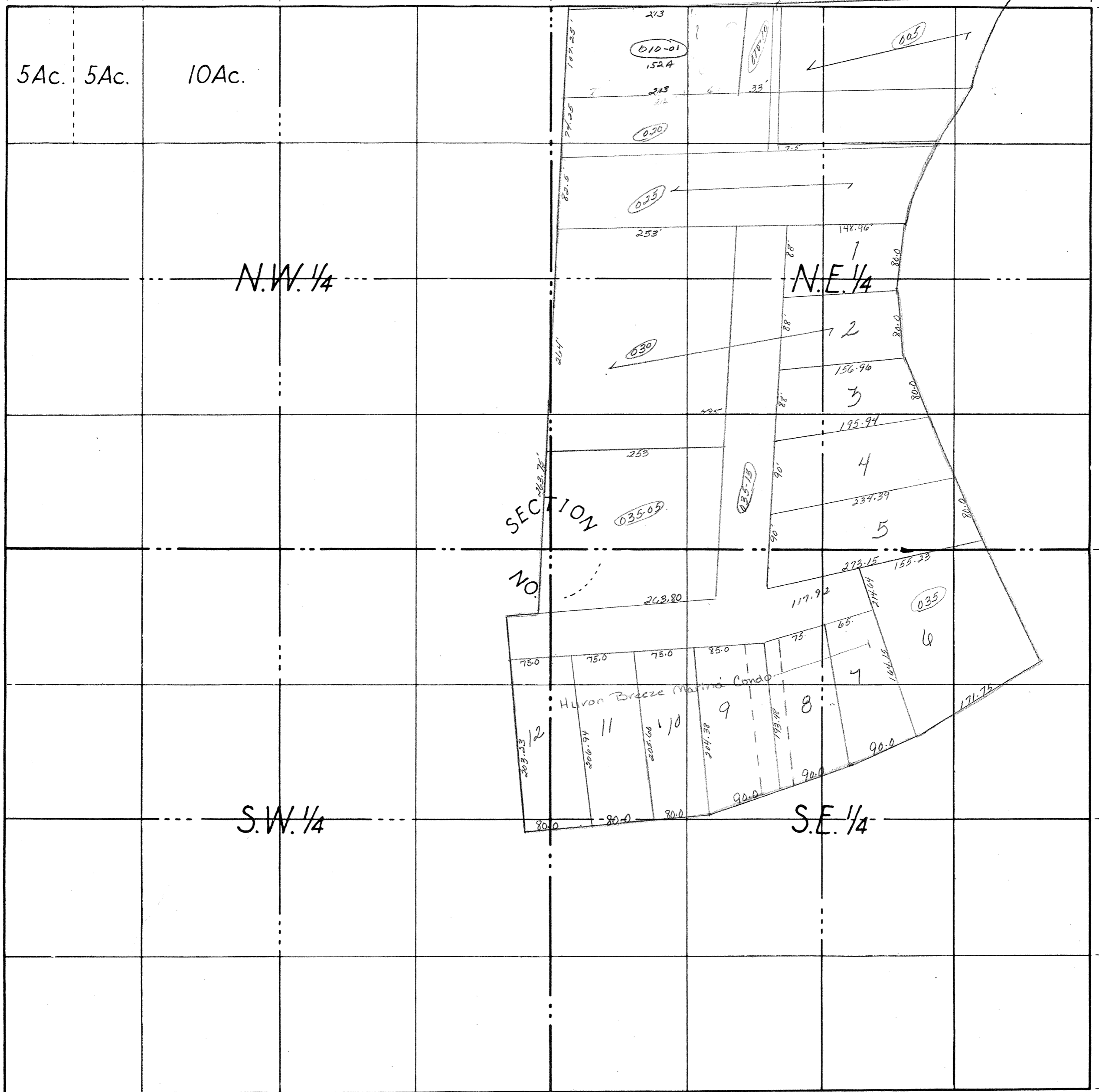




660' = 40 Rods 660' = 40 Rods

1320' = 80 Rods

2640' = 160 Rods

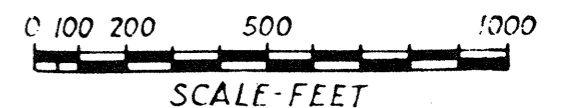


2640' = 160 Rods

1320' = 80 Rods

660' = 40 Rods

COUNTY Asenore MICH.
 TOWNSHIP Augres Twp.
 RANGE T19N R65
 AREA Sec. # 24 (A)



NO. _____

DATE _____