



660' = 40 Rods 660' = 40 Rods 1320' = 80 Rods 2640' = 160 Rods

5Ac. 5Ac. 10Ac.

N.W. 1/4

N.E. 1/4

SECTION NO. #5

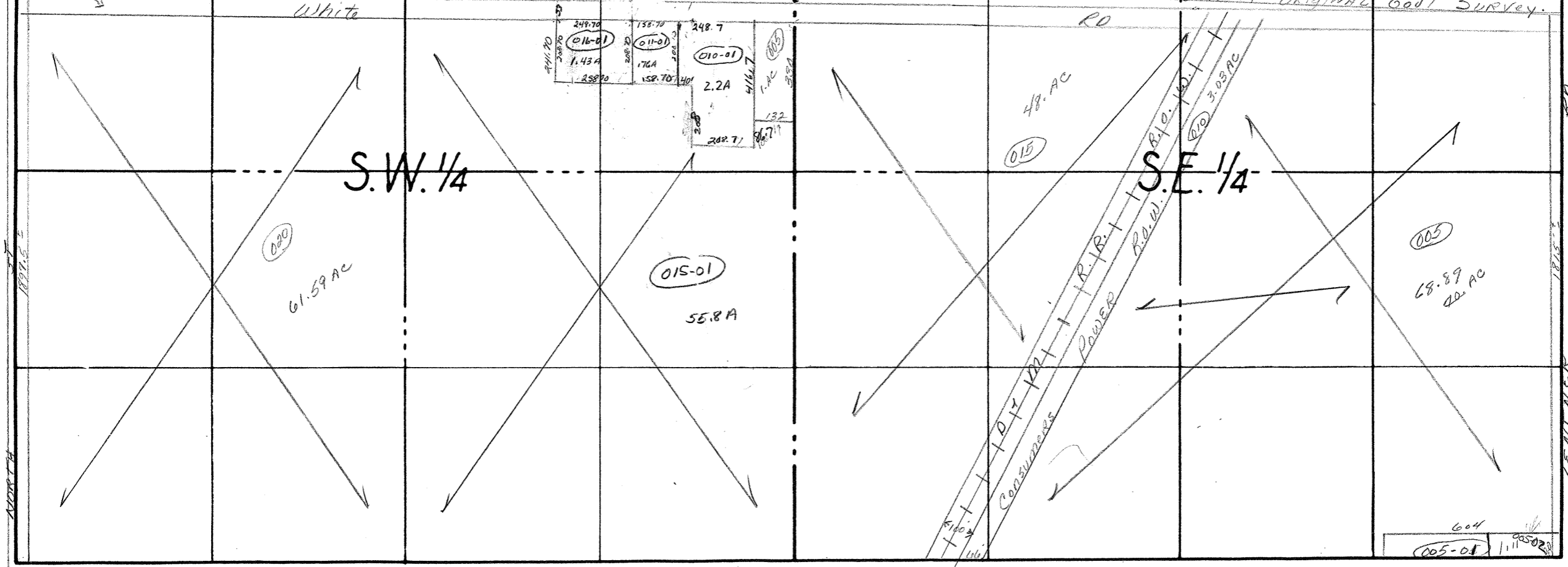
2640' = 160 Rods

1320' = 80 Rods

660' = 40 Rods

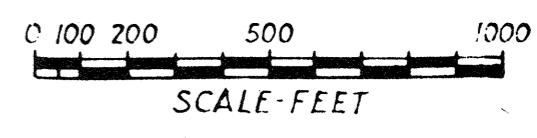
660' = 40 Rods

LINE ESTABLISHED BY AERIAL PHOTO APPROX. N. SEC. LINE AS ESTABLISHED FROM ORIGINAL GOVT SURVEY



249.70	158.70	248.7
011-01	011-01	010-01
1.43 AC	176A	2.2A
258.70	158.70	248.7

COUNTY ARENAC MICH.
TOWNSHIP TURNER Twp.
RANGE T20N R06
AREA Sec. #5



NO. _____ DATE _____