

MINARD'S SUBDIVISION

Part of Lot 1, Section 13, T. 20N. R. 7E.
Whitney Twp., Arenac County, Michigan.
Surveyed August 9th, 1928.
Scale 1 inch = 100 feet.
Scale of feet:

DEDICATION

KNOW ALL MEN BY THESE PRESENTS:

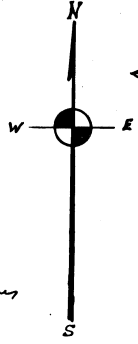
That we Robert E. Minard and Susan Minard his wife both of Whitney Twp., Arenac County, Michigan have caused the land embraced in the annexed plat, to be surveyed laid out and platted, to be known as "MINARD'S SUBDIVISION" of part of lot 1, Section 13, T. 20N. R. 7E. Whitney Twp., Arenac County, Michigan.

Signed and Sealed
in presence of

Anna Frank
Erin E. Reiche
Erin E. Reiche

Robert E. Minard LS.
Susan Minard LS.

WIDTH AND LOCATION OF
STATE TRUNK LINE AND
FEDERAL AID ROADS O. K.
Blair R. Higgins
State Highway Commission



STATE of MICHIGAN)
COUNTY of ARENAC) SS:

On this 25th day of April 1939 Before me,
a Notary Public, personally came.

Robert E. Minard
Susan Minard

Known to me to be the persons who made the above dedication,
and acknowledged the same to be their free act and deed.

Theo. E. Reiche
NOTARY PUBLIC

in and for Arenac County, Michigan.
My Commission expires Feb. 28th 1941

Bearings of lines on this plat are based on Compass bearings and Transit angles; the declination set at 2°35' W. 1939. Dimensions are in feet and tenths. I hereby certify, that I have surveyed and staked out the land embraced in the annexed plat; that I have drawn the plat according to said survey and that permanent monuments consisting of iron pipe 1 1/2" long set in a concrete base 4" by 4" have been placed at all intersections of the plat boundary, and the U.S. 23 Right of Way, and points marked X.

John W. Applin Registered Surveyor
JOHN W. APPLIN

DESCRIPTION

The land embraced in the annexed plat of MINARD'S SUBDIVISION of part of lot 1, Section 13, T. 20N. R. 7E. Whitney Twp., Arenac County, Michigan, is described as follows:
Beginning at the point of intersection of the South line of lot 1, Section 13, T. 20N. R. 7E. with the East right of way line of U.S. 23 Highway, as now surveyed; said point being 457.8 feet East from the South West Corner of said lot 1, Section 13, then N. 2°46' W. along said East right of way line 12.95 feet to South Bank of Whitney Drain, then East along bank 350 feet then S. 2°46' E. 12.82 feet to South line of said lot 1; then West along said line 350 feet to the point of beginning.

I HEREBY CERTIFY THAT THIS COPY IS
A TRUE COPY OF THE MAP OR PLAT
FORWARDED THE REGISTER OF DEEDS
FOR RECORDING.

COMPARED 5/23/39
G.T. Hartman DEPUTY AUDITOR GENERAL

OFFICE OF COUNTY TREASURER

This is to certify that there are no tax liens or titles held by the State or by individuals on the above described land for the years preceding the 25th day of April - 1939, and that the taxes for said period of years have been paid, as shown by the records of this office; excepting taxes now in process of collection by Twp. or County Officers.

Claude E. Upton County Treasurer
CLAUDE E. UPTON

This plat was approved by the County, Plat Board of Arenac County, Michigan, at a meeting held on the 25 day of April 1939.

Harvey E. Converse Probate Judge.
John Whitling County Clerk.
Claude E. Upton County Treasurer.
CLAUDE E. UPTON

This plat was approved by the Town Board of Whitney Twp., Arenac County, Michigan, at a meeting held on the 26 day of April 1939.

Mary Pendred Township Clerk.
MARY PENDRED

Examined and Approved

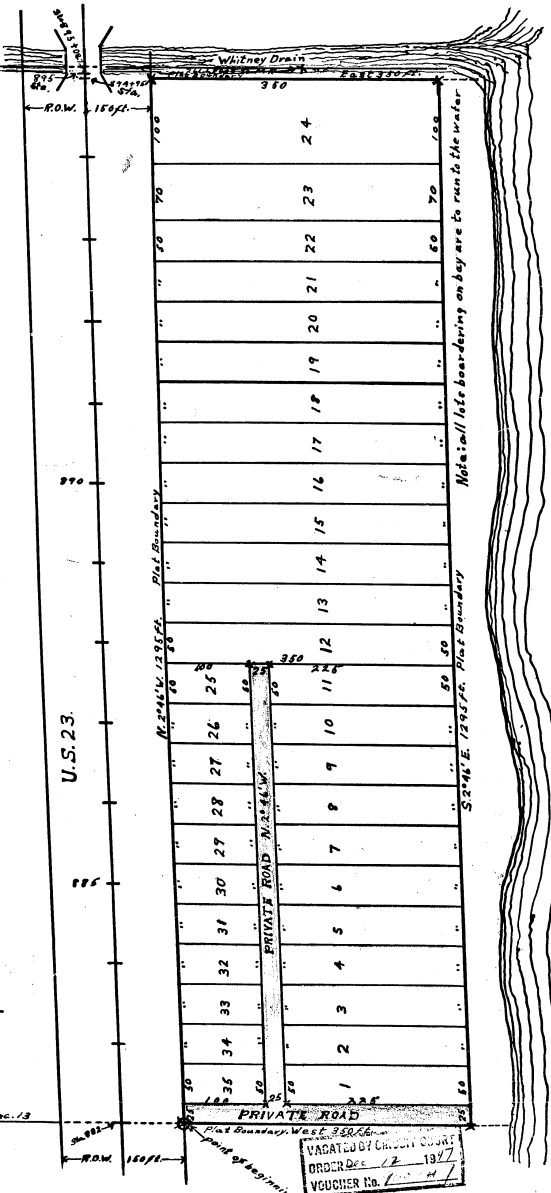
5/23/39
G.T. Hartman Deputy Auditor General

FILED IN AUDITOR GENERAL'S DEPT.

7/13/39
G.T. Hartman DEPUTY AUDITOR GENERAL

COPY
Register's Office
Arenac County,) SS.
Plat of Minard's Subdivision
was Recorded this 25th day of
May A. D. 1939 at 9:00 o'clock
A. M. in Liber 1 of Plats
on Page 46
Anna Black Register of Deeds
ORIGINAL ON FILE

West 457.8 feet to S.W. corner of lot 1, Sec. 13
South line of lot 1, Sec. 13.



SAGINAW BAY
(LAKE HURON)

VADATED BY COUNTY CLERK
ORDER No. 12 1937
VOUCHER No. 12 1937