

DEDICATION

KNOW ALL MEN BY THESE PRESENTS, That Edwin W. Sims, Charlotte Sims and Franks Sims, Trustees, as proprietor, have caused the land embraced in the annexed plat to be surveyed, laid out and platted, to be known as SIMS RANCH CORNERS a subdivision of part of E 1/2 of E 1/2 of SE 1/4 section 10 T19N R7E Sims Township Arenac County, Michigan.

Signed and Sealed in Presence of

Asa Whiting (L.S.)
Edwin W. Sims Trustee
Charlotte Sims (L.S.)
Charlotte Sims Trustee
Franks Sims (L.S.)
Franks Sims Trustee
As such Trustees

STATE OF MICHIGAN, ss.
County of Iosco

On this 30th day of August 1941 before me, a Notary Public in and for said county, personally came the above named Edwin W. Sims, Charlotte Sims and Franks Sims, Trustees, known to me to be the persons who executed the above dedication, and acknowledged the same to be their free act and deed.

Raymond J. Cooke
Notary Public Iosco County, Michigan.
My Commission expires June 26, 1943.

DESCRIPTION OF LAND PLATTED

The land embraced in the annexed plat of SIMS RANCH CORNERS a subdivision of part of E 1/2 of E 1/2 of SE 1/4 section 10 T19N R7E Sims Township Arenac County, Michigan is described as follows: From the section corner common to sections 10, 11, 14 and 15 T19N R7E Sims Township Arenac County, Michigan thence N 3° 03' 06" E 37.55 feet, thence N 86° 55' 54" W 33 feet to point of beginning, thence N 3° 03' 06" E 2070.48 feet, thence along arc of degree of curve 144.86' with long chord S 66° 47' 17" W 222.93 feet, thence S 3° 03' 06" W 1745.97 feet, thence N 79° 34' 30" W 201.67 feet, thence S 10° 25' 30" W 198.35 feet, thence S 79° 34' 30" E 429.01 feet to point of beginning.

CERTIFICATE OF MUNICIPAL APPROVAL

This plat was approved by the Township Board of the Township of Sims at a meeting held August 15, 1941.
Philip Dittmer Jr.
Philip Dittmer Jr. Township Clerk.

SIMS RANCH CORNERS

A SUBDIVISION OF PART OF E 1/2 OF E 1/2 OF SE 1/4 SECTION 10 T19N R7E SIMS TOWNSHIP ARENAC COUNTY, MICHIGAN.

COUNTY TREASURER'S CERTIFICATE RELATING TO TAXES

Office of County Treasurer, Arenac County.
I hereby certify, That there are no tax liens or titles held by the State on the lands described hereon, and that there are no tax liens or titles held by individuals on said lands, for the five years preceding the 30th day of August 1941 and that the taxes for said period of five years are paid, as shown by the records of this office.
This certificate does not apply to taxes, if any, now in process of collection by Township collecting officers.
The above certificate is hereby signed up to me, Sept 31, 1941, Claude E. Upton.
Claude E. Upton
Claude E. Upton County Treasurer.

SURVEYOR'S CERTIFICATE

I hereby certify that the plat hereon delineated is a correct one and that permanent metal monuments consisting of bars not less than one-half inch in diameter and 48 inches in length encased in a concrete cylinder at least 4 inches in diameter and 48 inches in depth have been placed at points marked thus @ as thereon shown at all angles in the boundaries of the land platted as shown on said plat.
R. J. Cooke
R. J. Cooke Registered Land Surveyor.
East Tawas, Michigan.

CERTIFICATE OF APPROVAL BY BOARD OF COUNTY ROAD COMMISSIONERS

This plat has been examined and was approved on the 17th day of July 1942 by the Arenac County Board of Road Commissioners.
Earl H. Foster Chairman.
C. A. Warren Member.
James Daniels Member.

CERTIFICATE OF APPROVAL BY COUNTY BOARD

This plat was approved on the 9th day of August 1941.
Asa Whiting County Clerk.
Claude E. Upton County Treasurer.

Register's Office
Arenac County,
Part of Sims Ranch Corners
Sims Township
Sept 2, 1941 at 9 O'clock
A. M.
Asa Whiting
Asa Whiting Register of Deeds

CERTIFICATE AS TO COUNTY ROADS

We hereby certify that said plat appears to include land located on a county road.
Asa Whiting
Asa Whiting
Claude E. Upton
Claude E. Upton County Plat Board.
Examined and approved July 17th 1942.
Earl H. Foster
Earl H. Foster
C. A. Warren
C. A. Warren
James Daniels
James Daniels County Road Commission.

CERTIFICATE AS TO STATE TRUNK LINE OR FEDERAL AID ROADS

We hereby certify that said plat appears to include land located on a state trunk line or federal aid road.
Asa Whiting
Asa Whiting
Claude E. Upton
Claude E. Upton County Plat Board.
Width and location of state trunk line and federal aid roads O. K.
Charles M. Ziegler
Charles M. Ziegler State Highway Commissioner.

Having the width and location of this trunk line and federal aid road
examined and approved on the 9th day of August 1941.
Charles M. Ziegler
Charles M. Ziegler State Highway Commissioner.

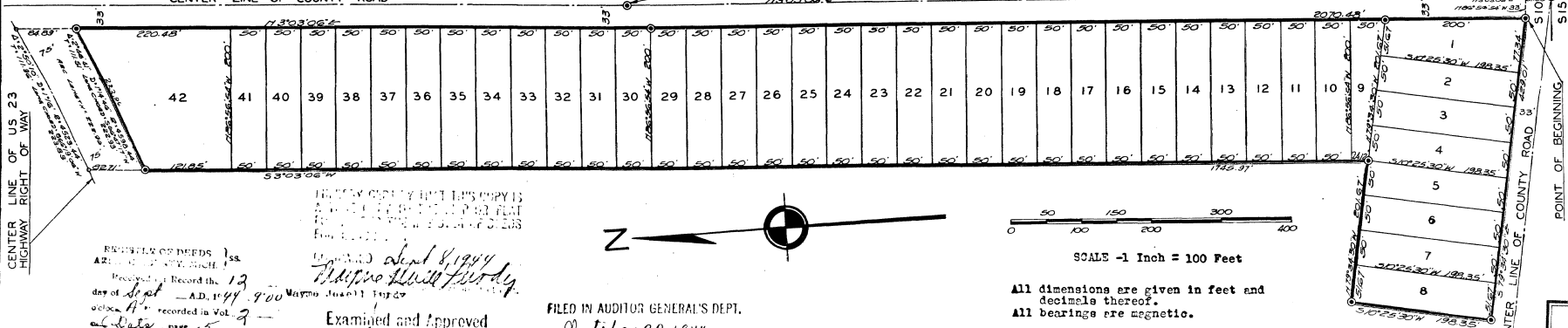
CENTER LINE OF COUNTY ROAD

1/8 CORNER

SECTION

LINE

1520'



RECORDED IN DEEDS
AR 1941 13
Received and Record the 13 day of Sept A.D. 1941 9:00
Asa Whiting
Asa Whiting Register of Deeds

Examined and Approved
Sept 8, 1941
Raymond J. Cooke
Raymond J. Cooke Notary Public

FILED IN AUDITOR GENERAL'S DEPT.
October 23, 1941
Raymond J. Cooke
Raymond J. Cooke Notary Public

All dimensions are given in feet and decimals thereof.
All bearings are magnetic.

SECTION CORNER
S 11 T19N R7E
S 15
POINT OF BEGINNING
29078