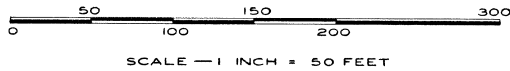
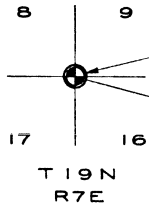


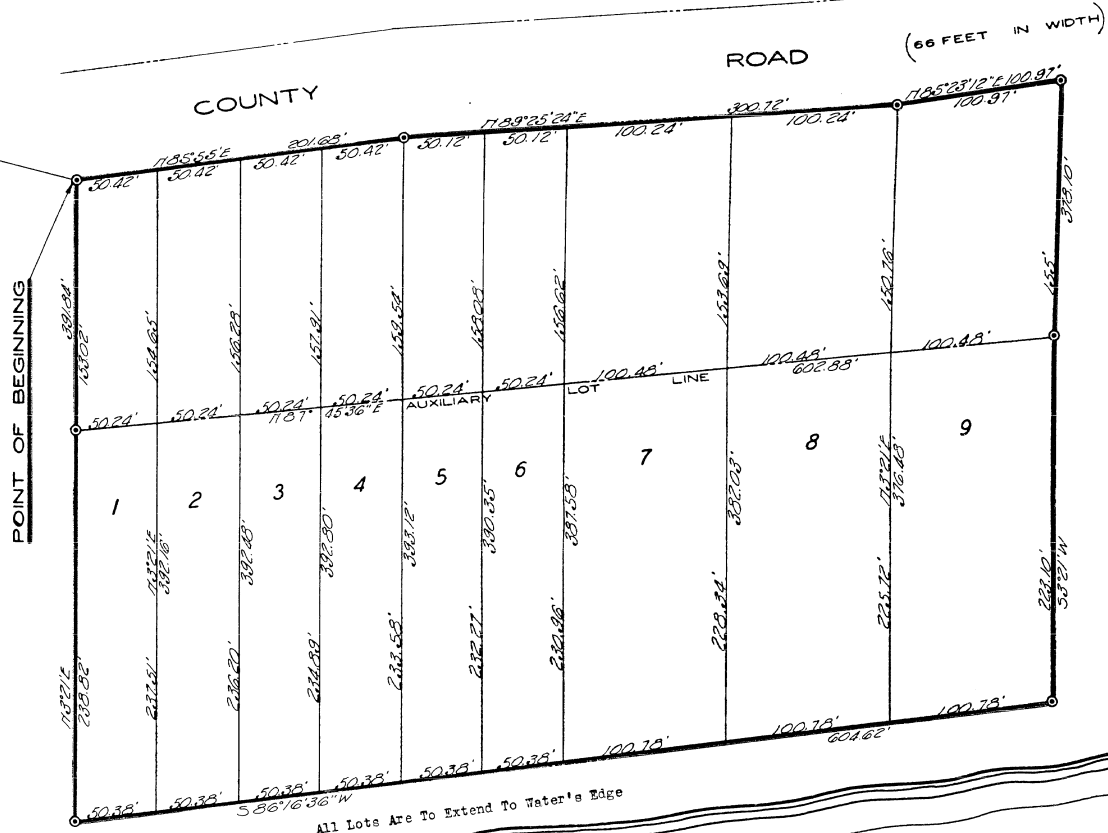
# MERLE'S OAK RIDGE PARK

A SUBDIVISION OF PART OF THE E1/2 OF W1/2 OF FRACTIONAL SECTION 16 T19N R7E  
SIMS TOWNSHIP ARENAC COUNTY, MICHIGAN.



All dimensions are given in feet and decimals thereof.  
All bearings are magnetic.

SURVEY and PLAT BY R. J. Cooke  
R. J. Cooke Registered Land Surveyor.  
East Tawas, Michigan.



All Lots Are To Extend To Water's Edge

SAGINAW

BAY

