

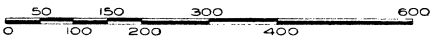
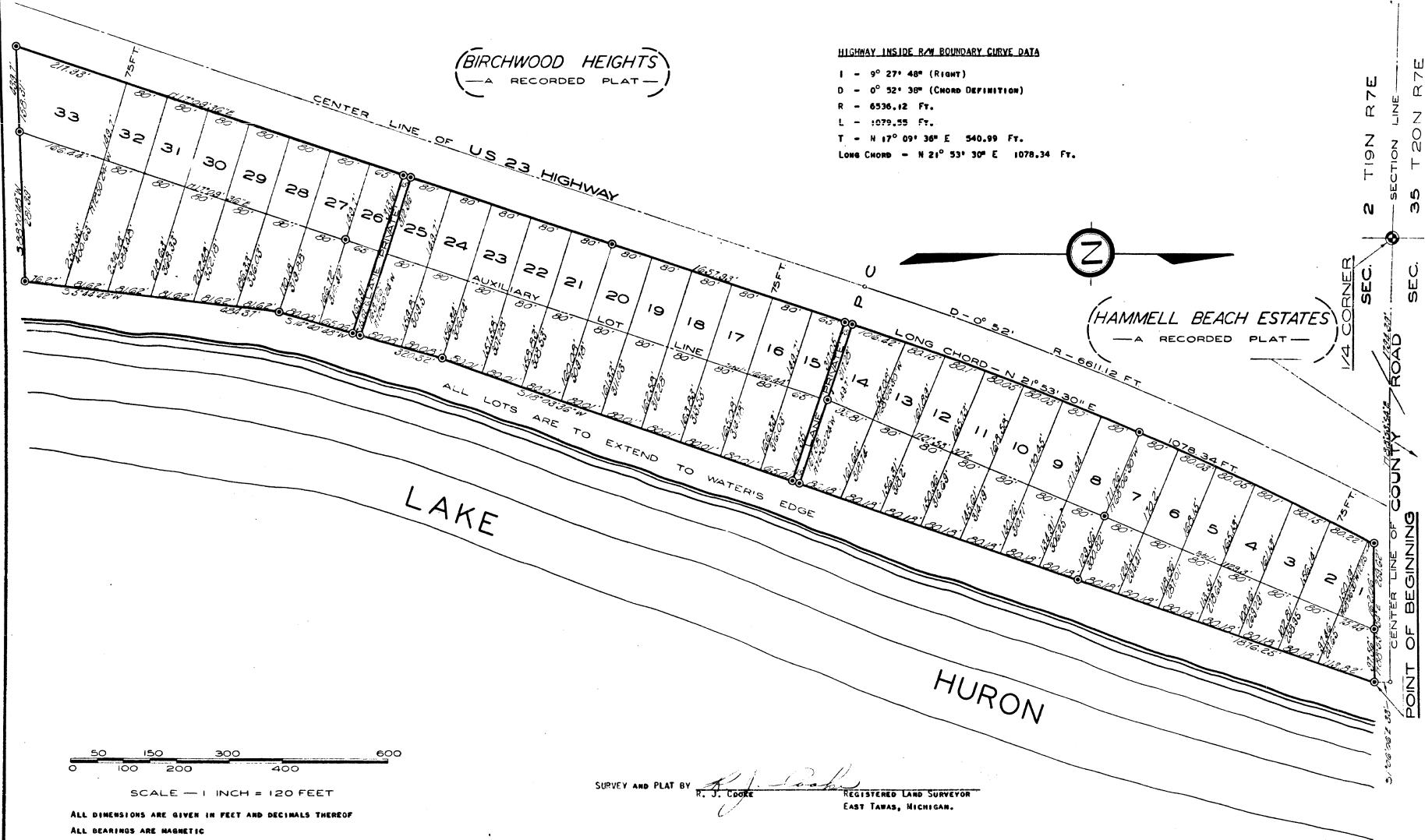
BIRCHWOOD SHORES

A SUBDIVISION OF PART OF GOVERNMENT LOTS 1 & 2 OF SECTION 2 T19N R7E
SIMS TOWNSHIP ARENAC COUNTY, MICHIGAN.

(BIRCHWOOD HEIGHTS)
— A RECORDED PLAT —

HIGHWAY INSIDE R/W BOUNDARY CURVE DATA

- I - 9° 27' 48" (RIGHT)
- D - 0° 32' 30" (CHORD DEFINITION)
- R - 6536.12 FT.
- L - 1079.55 FT.
- T - N 17° 09' 36" E 540.99 FT.
- LONG CHORD - N 21° 53' 30" E 1078.34 FT.



SCALE — 1 INCH = 120 FEET

ALL DIMENSIONS ARE GIVEN IN FEET AND DECIMALS THEREOF
ALL BEARINGS ARE MAGNETIC

SURVEY AND PLAT BY H. J. COOKE REGISTERED LAND SURVEYOR
EAST TAWAS, MICHIGAN.

1-11