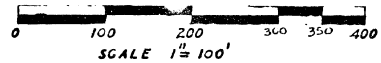


RIFLE RIVER VALLEY PLAT

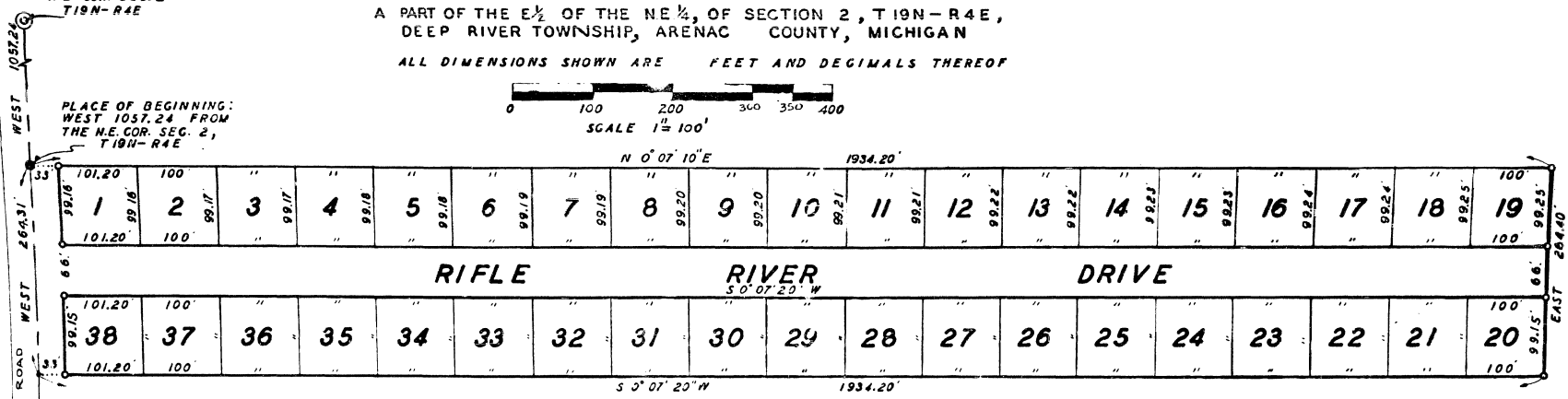
A PART OF THE E 1/2 OF THE NE 1/4, OF SECTION 2, T19N-R4E,
DEEP RIVER TOWNSHIP, ARENAC COUNTY, MICHIGAN

ALL DIMENSIONS SHOWN ARE FEET AND DECIMALS THEREOF



N.E. COR. SEC. 2
T19N-R4E

PLACE OF BEGINNING:
WEST 1057.24 FROM
THE N.E. COR. SEC. 2,
T19N-R4E



COUNTY ROAD WEST 2643.1'

COUNTY ROAD WEST 1057.24'

DEDICATION

KNOW ALL MEN BY THESE PRESENTS, THAT WE ANTHONY KOSTOWSKI AS PROPRIETOR AND JULIA KOSTOWSKI, HIS WIFE, HAVE CAUSED THE LAND EMBRACED IN THE ANNEXED PLAT TO BE SURVEYED, LAID OUT AND PLATTED TO BE KNOWN AS "RIFLE RIVER VALLEY PLAT", A PART OF THE EAST 1/2 OF THE NORTHEAST 1/4 OF SECTION 2, T19N-R4E, DEEP RIVER TOWNSHIP, ARENAC COUNTY, MICHIGAN, AND THAT THE DRIVE AND ROAD AS SHOWN ON SAID PLAT ARE HEREBY DEDICATED TO THE USE OF THE PUBLIC.

WITNESSES:

Nowana Maynard
NOWANA MAYNARD
Bernard Henderson
BERNARD HENDERSON

Anthony Kostowski L.S.
ANTHONY KOSTOWSKI
Julia Kostowski
JULIA KOSTOWSKI

STATE OF MICHIGAN)
COUNTY OF GENESEE) SS

ON THIS 28 DAY OF January 1958, BEFORE ME, A NOTARY PUBLIC, IN AND FOR SAID COUNTY PERSONALLY APPEARED THE ABOVE NAMED ANTHONY KOSTOWSKI AND JULIA KOSTOWSKI, HIS WIFE, KNOWN TO ME TO BE THE PERSON WHO EXECUTED THE ABOVE DEDICATION AND WHO ACKNOWLEDGED THE SAME TO BE THEIR FREE ACT AND DEED.

MY COMMISSION EXPIRES Aug 13, 1961

Carl H. Carlson
CARL H. CARLSON - NOTARY PUBLIC
GENEESE COUNTY, MICHIGAN

DESCRIPTION OF LAND PLATTED

THE LAND EMBRACED IN THE ANNEXED PLAT OF "RIFLE RIVER VALLEY PLAT", A PART OF THE E 1/2 OF THE NE 1/4 OF SECTION 2, T19N-R4E, DEEP RIVER TOWNSHIP, ARENAC COUNTY, MICHIGAN, IS DESCRIBED AS FOLLOWS: BEGINNING AT A POINT ON THE NORTH SECTION LINE THAT IS WEST 1057.24 FEET FROM THE NE CORNER OF SECTION 2, T19N-R4E; THENCE WEST 264.31 FEET; THENCE S 0° 07' 20" W, 1234.20 FEET; THENCE EAST 264.40 FEET; THENCE N 0° 07' 10" E, 1234.20 FEET TO THE POINT OF BEGINNING. THIS PLAT CONTAINS 36 NUMBERED LOTS.

COPY
Arenac County
Rifle River Valley Plat
was recorded this 9th day of December, 1958 at 9:30 A.M. in 2 of 1153 of Plats
of Page 62
Archie M. Gready

December 5, 1958
December 16, 1958
December 2, 1958
Carl H. Carlson

CERTIFICATE OF APPROVAL BY COUNTY BOARD

THIS PLAT WAS APPROVED ON THE 5th DAY OF December, 1958 BY THE ARENAC COUNTY PLAT BOARD.

Archie M. Gready
ARCHIE M. GREADY
COUNTY DRAIN COMMISSIONER
Archie M. Gready
DOUGLAS C. BLACK--COUNTY CLERK
Harry M. Gready
HARRY M. GREADY
COUNTY TREASURER

CERTIFICATE OF APPROVAL BY BOARD OF COUNTY ROAD COMMISSIONERS

THIS PLAT HAS BEEN EXAMINED AND WAS APPROVED ON THE 2nd DAY OF Sept, 1958 BY THE ARENAC COUNTY BOARD OF ROAD COMMISSIONERS.

John C. Adams
JOHN C. ADAMS--COMMISSIONER
Robb Perrin
ROBB PERRIN--COMMISSIONER
Thomas Logan
THOMAS LOGAN--COMMISSIONER

CERTIFICATE OF MUNICIPAL APPROVAL

THIS PLAT WAS APPROVED BY THE TOWNSHIP BOARD OF THE TOWNSHIP OF DEEP RIVER, AT A MEETING HELD ON THE 1st DAY OF September, 1958.

Clarence Potts
CLARENCE POTTS--TOWNSHIP CLERK

COUNTY TREASURER'S CERTIFICATE RELATING TO TAXES

OFFICE OF THE COUNTY TREASURER, ARENAC COUNTY, MICHIGAN.

I HEREBY CERTIFY THAT THERE ARE NO TAX LIENS OR TITLES HELD BY THE STATE ON THE LANDS DESCRIBED HEREBY, AND THAT THERE ARE NO TAX LIENS OR TITLES HELD BY INDIVIDUALS ON SAID LANDS FOR THE FIVE YEARS PRECEDING THE 28th DAY OF January, 1958, AND THAT THE TAXES FOR SAID PERIOD OF FIVE YEARS ARE PAID AS SHOWN BY THE RECORDS OF THIS OFFICE. THIS CERTIFICATE DOES NOT APPLY TO TAXES, IF ANY, NOW IN PROCESS OF COLLECTION BY TOWNSHIP, CITY, OR VILLAGE COLLECTION OFFICERS.

Harry M. Gready
HARRY M. GREADY
COUNTY TREASURER

SURVEYOR'S CERTIFICATE

I HEREBY CERTIFY THAT THE PLAT HEREIN DELINEATED IS A CORRECT ONE AND THAT PERMANENT MONUMENTS CONSISTING OF IRON BARS AT LEAST ONE-HALF INCH IN DIAMETER AND 36 INCHES IN LENGTH, ENCASED IN CONCRETE CYLINDERS 4 INCHES IN DIAMETER AND 36 INCHES IN LENGTH HAVE BEEN SET AT POINTS MARKED (C) AS THEREON SHOWN AT ALL ANGLES IN THE BOUNDARIES OF THE LAND PLATTED, AT ALL ANGLES IN THE STREETS, AT ALL INTERSECTIONS OF THE LINES OF BOUNDARIES OF THE PLAT.

Carl H. Carlson
CARL H. CARLSON
REGISTERED PROFESSIONAL CIVIL
ENGINEER #9159