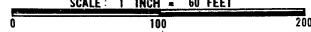


BORDEAUX SUBDIVISION

A PART OF N.E. 1/4 OF SECTION 29 T.18N.-R.5E

STANDISH TOWNSHIP, ARENAC COUNTY, MICHIGAN

SCALE: 1 INCH = 60 FEET


ALL DIMENSIONS ARE GIVEN IN FEET AND DECIMALS THEREOF

DESCRIPTION

The land embraced in the annexed plat of BORDEAUX SUBDIVISION, A Part of NE 1/4 of Section 29, T.18N. - R.5E., Standish Township, Arenac County, Michigan, is described as follows: Commencing at a point on the North Section Line of Section 29, said point of beginning is 1165.68 feet east of the N 1/2 Corner of Section 29, T.18N., R.5E., thence East, along said section line 381.42 feet; thence S. 0°00'26"E., 233.16 feet; thence S. 55°36'E., 180.00 feet; thence S. 71°25'E., 220.88 feet; thence S. 01°52'W., 382.70 feet; thence N. 70°19'W., 496.18 feet; thence N. 56°55'W., 118.05 feet; thence N. 39°11'W., 123.31 feet; thence N. 16°53'W., 199.51 feet; thence N. 05°39'W., 271.19 feet to the point of beginning. This plat contains 22 lots numbered consecutively from 1 to 22 inclusive.

COUNTY TREASURER'S CERTIFICATE RELATING TO TAXES
 (Sec. 135, Act. 206, 1897 as amended Sec. 211.135 C.L. 1948)

Office of County Treasurer, Arenac County

I hereby certify that there are no tax liens or titles held by the State on the lands described herein, and that there are no tax liens or titles held by individuals on said lands, for the five years period preceding the 5th day of August, 1961, and the taxes for said period of five years are all paid, as shown by the records of this office.

This certificate does not apply to taxes, if any, now in process of collection by township, city or village collecting officers.

Harry McCready
 Harry McCready - County Treasurer

CERTIFICATE OF APPROVAL BY BOARD OF COUNTY ROAD COMMISSIONERS

This plat has been examined and was approved on the 5th day of August, 1961 by the Arenac County Board of Road Commissioners.

Ross Ferrin - Chairman James Daniels
Charles Mittenber

CERTIFICATE OF MUNICIPAL APPROVAL

This plat was approved by the Township Board of the Township of Standish, Arenac County, Michigan, at a meeting held on the 5th day of August, 1961.

Burdett Milne
 Burdett Milne - Township Clerk

DEDICATION

KNOW ALL MEN BY THESE PRESENTS, That we, Raymond J. Bordeaux and Aileen V. Bordeaux, his wife; and Lottie P. Bordeaux and Robert H. Bordeaux, his wife; and Dorothy E. Bordeaux, his wife; as proprietors have caused the land embraced in the annexed plat to be surveyed, laid out and platted to be known as BORDEAUX SUBDIVISION, and that the Roads and Drives and Canals as shown on said plat are hereby dedicated to the use of the public.

Signed and Sealed in the Presence of:

Alfred O. LaPorte
 Alfred O. LaPorte
Geraldynne M. LaPorte
 Geraldynne M. LaPorte

Raymond J. Bordeaux (I.S.) Lottie P. Bordeaux (I.S.)
Aileen V. Bordeaux (I.S.) Robert H. Bordeaux (I.S.)
Clare T. Bordeaux (I.S.) Dorothy E. Bordeaux (I.S.)

ACKNOWLEDGMENT

STATE OF MICHIGAN } ss.
 County of _____

On this 7th day of August, 1961, before me, a Notary Public, in and for said County, appeared Raymond J. Bordeaux and Aileen V. Bordeaux, his wife; and Lottie P. Bordeaux, his wife; and Robert H. Bordeaux and Dorothy E. Bordeaux, his wife; known to me to be the persons who executed the above dedication and acknowledged same to be their free act and deed.

My Commission Expires Feb. 15, 1963

Alfred O. LaPorte
 Notary Public, ARENAC County, Michigan

CERTIFICATE OF APPROVAL BY THE COUNTY PLAT BOARD

This plat was approved by the County Plat Board of Arenac County, Michigan, this 7th day of August, 1961.

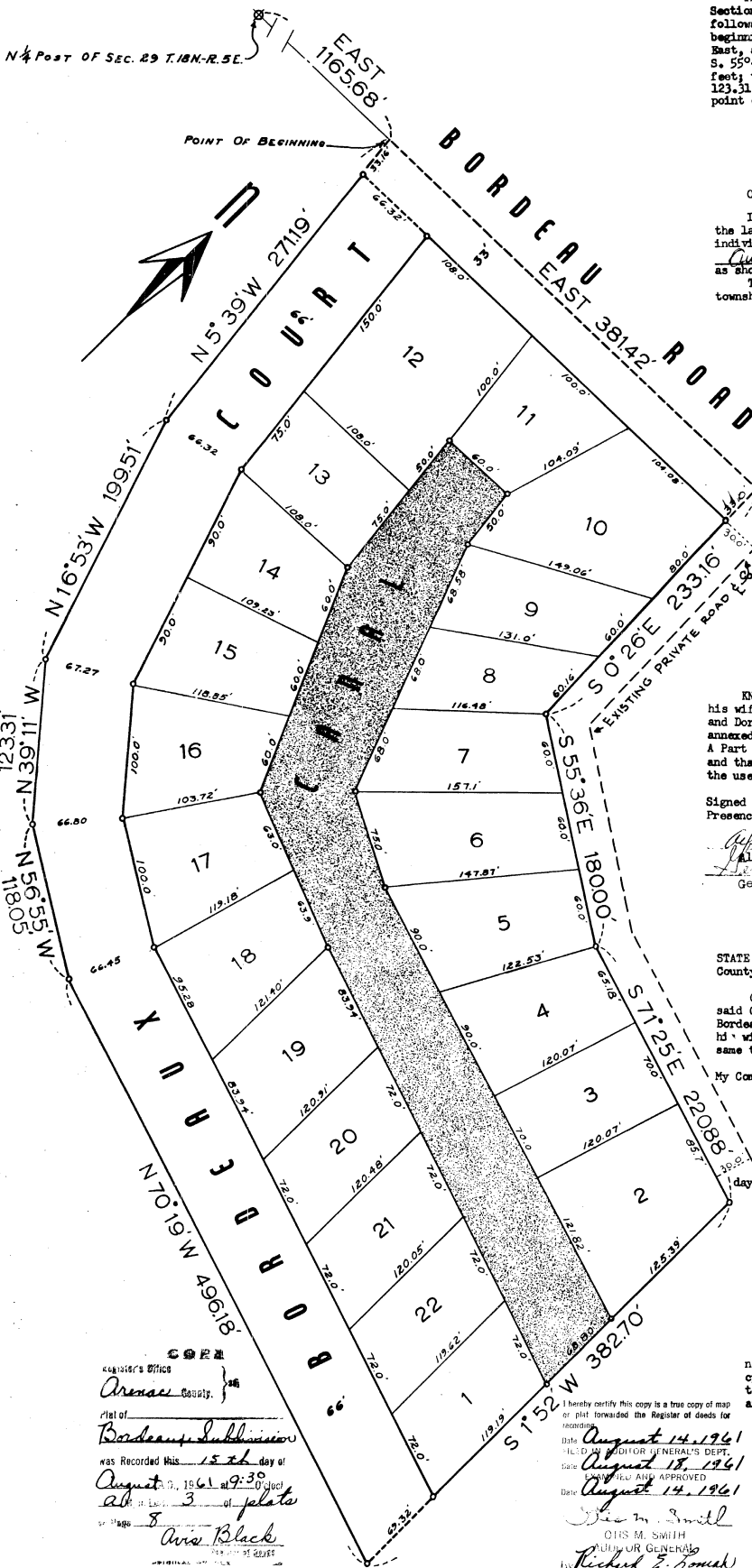
Harry McCready - County Treasurer Avis Black - Register of Deeds
Archie McCready - County Drain Commissioner Douglas C. Black - County Clerk

SURVEYOR'S CERTIFICATE

I hereby certify that the plat hereon delineated is a correct one and that permanent metal monuments consisting of 3/4" steel bars 36" long, encased in a concrete cylinder at least 4" in diameter and 36" in length have been placed at the points marked thus (o) as thereon shown at all angles in the boundaries of the land platted, at all angles of the road and at the intersection of the road and boundaries of the land platted.

Ronald K. McCallaway
 Ronald K. McCallaway
 Registered Land Surveyor, No. 5680

I hereby certify this copy is a true copy of map or plat forwarded the Registrar of deeds for recording.
 Date August 14, 1961
 Filed in RECORDS DIVISION GENERAL'S DEPT.
 Date August 18, 1961
 Date August 14, 1961
Chris M. Smith
 Chris M. Smith
 CLERK OF GENERAL'S DEPT.
Richard E. Lomas
 Richard E. Lomas - Plat Examiner



Register's Office
 Arenac County
 Plat of
Bordeaux Subdivision
 was Recorded this 15th day of
August, 1961 at 9:30 o'clock
AM of 3 of plat
 Page 8
Avis Black
 Register of Deeds