

DEDICATION
 KNOW ALL MEN BY THESE PRESENTS, that we, Albert B. Werdehoff... and Edna M. Werdehoff, his wife; and Douglas B. Eaton... and Lillian K. Eaton, his wife... as proprietors, have caused the land embraced in the annexed plat to be surveyed, laid out and platted, to be known as:

OAK RIDGE No 3

A SUBDIVISION OF PART OF GOVERNMENT LOT 1, SECTION 31, T.19N.R.7E.
 AUGRES TOWNSHIP, ARENAC COUNTY, MICHIGAN.

CERTIFICATE OF MUNICIPAL APPROVAL
 This plat was approved by the Township Board of the Township of Au Gres at a meeting held on the 27th day of June, 1963, and that the width of lots conform with the requirements of Section 30, Act 172 of 1929, as amended.
 Kathryn Baillif
 Clerk

A subdivision of Part of Government Lot 1, Section 31, T. 19N., R. 7E., Au Gres Township, Arenac County, Michigan.
 Rumsey Boulevard being a county road. Private Lane dedicated to the use of lot owners only.

APPROVAL BY COUNTY PLAT BOARD
 This plat was approved on the 27th day of June, 1963, by the Arenac County Plat Board.

Signed and Sealed in the Presence of:
 Albert B. Werdehoff (Notary Public)
 Edna M. Werdehoff (Witness)
 Douglas B. Eaton (Witness)
 Lillian K. Eaton (Witness)

Avis Black (County Register of Deeds)
 Douglas C. Black (County Clerk)
 Harry McCready (County Treasurer)
 Archie McCready (County Drain Commissioner)

APPROVAL BY BOARD OF COUNTY ROAD COMMISSIONERS
 This plat has been examined and was approved on the 27th day of June, 1963, by the Arenac County Board of Road Commissioners.

Ross Perrin (Chairman)
 Charles Dittenber (Member)
 James Daniels (Member)

ACKNOWLEDGMENT
 STATE OF MICHIGAN
 County of Arenac
 On this 13th day of May, 1963, before me, a Notary Public in and for said County, personally came the above named Albert B. Werdehoff and Edna M. Werdehoff, his wife; and Douglas B. Eaton and Lillian K. Eaton, his wife. known to me to be the persons who executed the above dedication, and acknowledged the same to be their free act and deed.
 Catherine K. Helms
 Notary Public, Arenac County
 My Commission expires: JANUARY 24, 1964

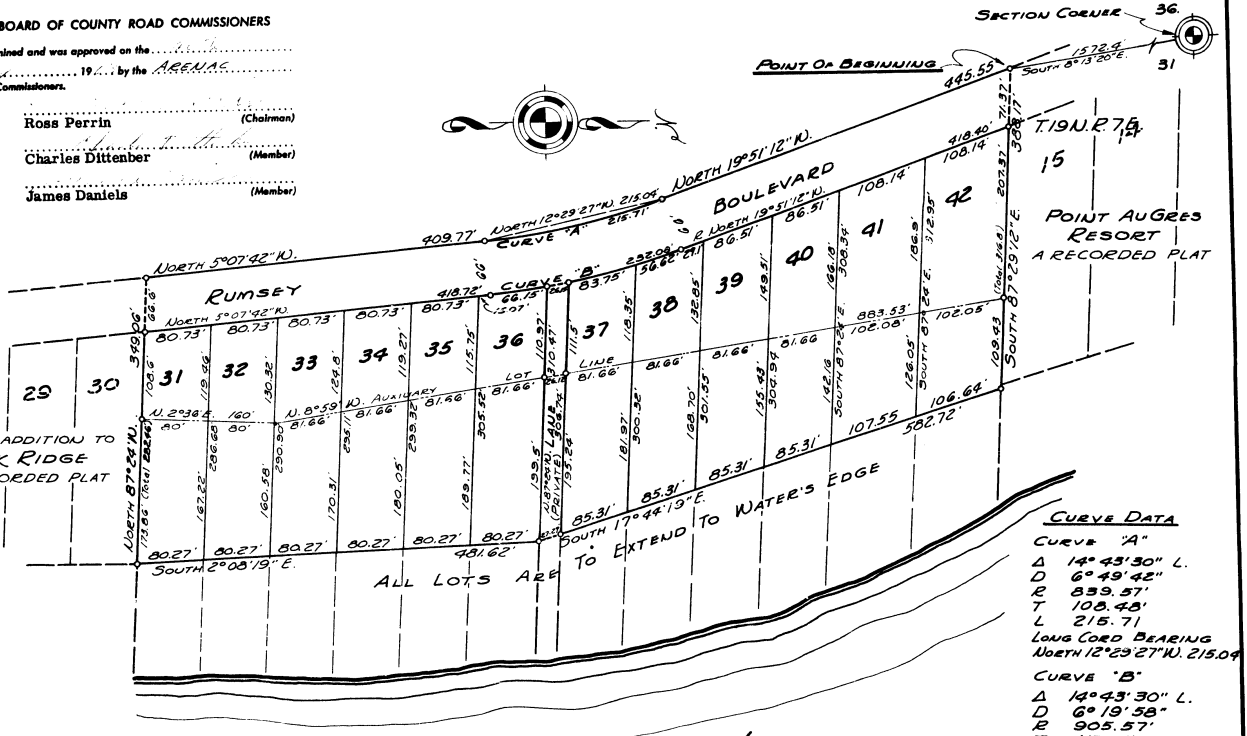
DESCRIPTION OF LAND PLATTED
 The land embraced in the annexed plat of Oak Ridge No. 3, A-Subdivision of Part of Government Lot 1, Section 31, T. 19N., R. 7E., Au Gres Township, Arenac County, Michigan, is described as follows: Beginning at a point which is S 8° 13' 20" E. 1572.4 feet from the Section corner common to Section 36, T. 19N. R. 6E. and Section 31, T. 19N. R. 7E., Michigan meridian, thence S 87° 29' 12" E. 388.17 feet, thence S 17° 44' 19" E. 582.72 feet, thence S 21° 09' 19" E. 481.62 feet, thence N 87° 24' W. 349.06 feet, thence N 5° 07' 42" W. 409.77 feet thence left on a 6° 49' 42" curve 215.71 feet, the Long Cord bearing N 12° 29' 27" W. 215.04 feet, thence N. 19° 51' 12" W. 445.55 feet to the point of beginning. Containing lots 31 through 42 inclusive and one private lane. Bearings of this plat are based on compass bearings and transit angles, the declination set at 4° West. Dimensions are in feet and decimals thereof.

SURVEYOR'S CERTIFICATE
 I hereby certify that the plat hereon delineated is a correct one and that permanent metal monuments consisting of bars not less than one-half inch in diameter and 36 inches in length, or shorter bars of not less than one-half inch in diameter lapped over each other, or shorter bars of not less than one-half inch in diameter placed at intervals of at least 6 inches with an over-all length of not less than 36 inches, have been placed at points marked thus (O) as hereon shown at all angles in the boundaries of the land platted, at all the intersections of streets, alleys, or of streets and alleys, and at the intersections of streets and alleys with the boundaries of the plat as shown on said plat.

James L. Scott
 Registered Land Surveyor Professional Engineer

SECOND ADDITION TO OAK RIDGE A RECORDED PLAT

COUNTY TREASURER'S CERTIFICATE
 ARENAC
 Office of County Treasurer, Arenac County.
 I hereby certify, that there are no tax liens or titles held by the State on the lands described hereon, and that there are no tax liens or titles held by individuals on said lands, for the five years preceding the 19th day of June, 1963, and that the taxes for said period of five years are all paid, as shown by the records of this office.
 This certificate does not apply to taxes, if any, now in process of collection by township, city or village collecting officers.
 Harry McCready (County Treasurer)



CURVE DATA

CURVE 'A'
 Δ 14° 43' 30" L.
 D 6° 49' 42"
 R 239.57'
 T 108.48'
 L 215.71'
 LONG CORD BEARING NORTH 12° 29' 27" W. 215.04'

CURVE 'B'
 Δ 14° 43' 30" L.
 D 6° 19' 58"
 R 905.57'
 T 117.01'
 L 232.67'
 LONG CORD BEARING NORTH 12° 29' 27" W. 232.06'

SCALE 1 INCH = 100 FT.
 SCALE OF FEET
 SURVEYED SEPT. 1962

15669