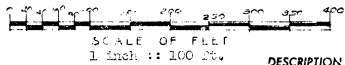


# "ELM PARK SUBDIVISION"

A PART OF THE S.W. 1/4 OF THE SW. 1/4, SEC. 19, T. 20 N. R. 6 E.  
VILLAGE OF TWINING, TURNER TWP. ARENAC CO.  
MICHIGAN



### DEDICATION

KNOW ALL MEN BY THESE PRESENTS, that we, Clayton J. Forshee and Constance L. Forshee, his wife, as proprietors, have caused the land embraced in the annexed plat to be surveyed, laid out and platted, to be known as "ELM PARK SUBDIVISION" a part of the S.W. 1/4 of the S.W. 1/4, Sec. 19, T. 20 N. R. 6 E. Village of Twining, Turner Twp., Arenac Co., Michigan. Lots numbered 1 and 2 are for commercial purposes and that the streets hereby dedicated to the use of the Public

### DESCRIPTION OF LAND PLATTED

The land embraced in the annexed plat of "ELM PARK SUBDIVISION" a part of the S.W. 1/4 of the S.W. 1/4, Sec. 19, T. 20 N. R. 6 E. Village of Twining, Turner Twp., Arenac Co., Mich., containing lots numbered 1 to 24, is described as follows:  
Beginning at a Point N. 0° 17' E. 207.94 ft. and S. 87° 55' E. 60.0 ft. from the S.W. corner of sec. 19, T. 20 N. R. 6 E. Michigan, running thence S. 88° 11' 30" W. 351.55 ft; thence N. 27° 18' E. 754.50 ft; thence N. 14° 14' W. 194.0 ft; thence N. 79° 57' 1/2" W. 716.28 ft; thence S. 0° 17' W. 370.18 ft. thence S. 0° 17' E. 60.0 ft. to the Point of Beginning.  
NOTE: All dimensions are given in feet and decimals thereof.  
Lots numbered 1 and 2 are for Commercial purposes.

### CERTIFICATE OF MUNICIPAL APPROVAL

This plat was approved by the Village Council of the Village of Twining at a meeting held August 12, 1964, and is in compliance with Section 19A, and that the width of lots conform with the requirements of Section 30, Act 172, of 1929, as amended.

Emory C. Curriston  
Clerk

### COUNTY TREASURER'S CERTIFICATE

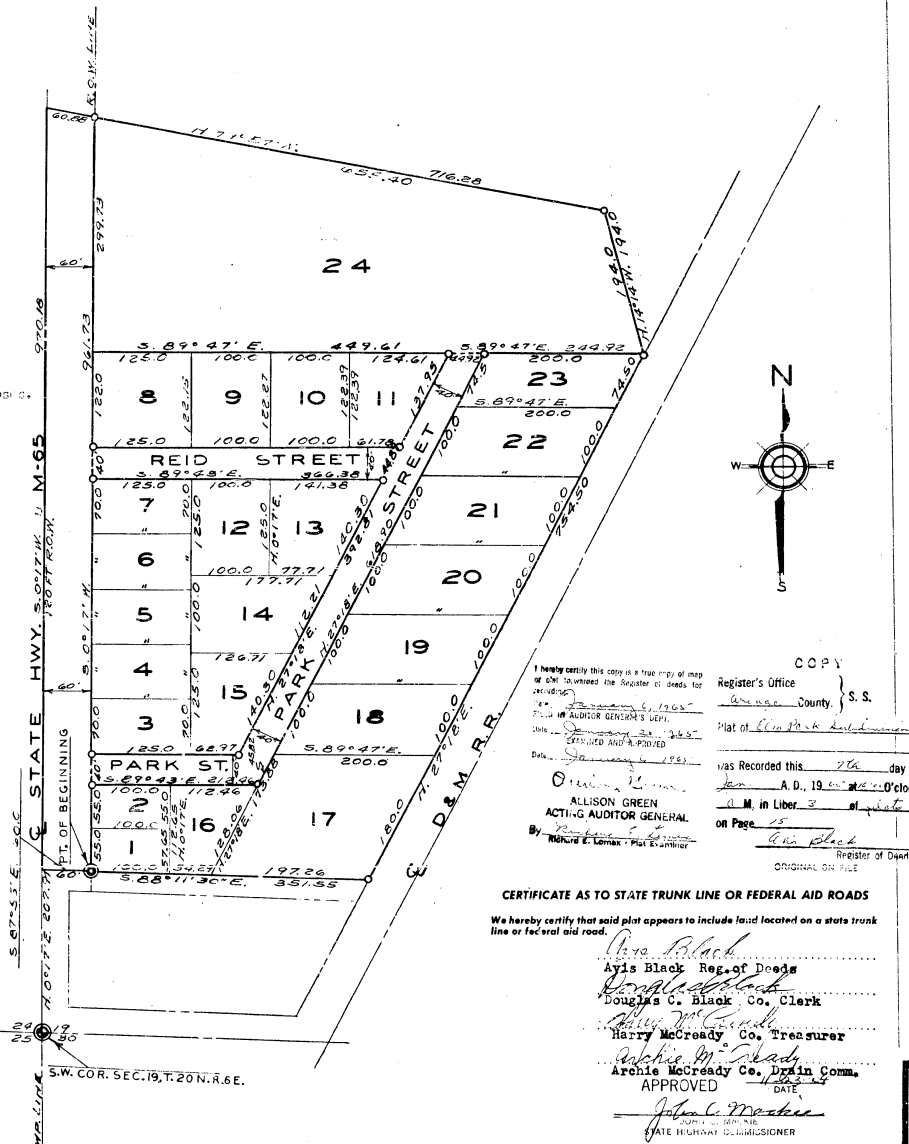
Office of County Treasurer, ARENAC County.  
I hereby certify, that there are no tax liens or titles held by the State on the lands described hereon, and that there are no tax liens or titles held by individuals on said lands, for the five years preceding the 19th day of August, 1964, and that the taxes for said period of five years are all paid, as shown by the records of this office.

This certificate does not apply to taxes, if any, now in process of collection by township, city or village collecting officers.  
Harry McCready (County Treasurer)

### SURVEYOR'S CERTIFICATE

I hereby certify that the plat hereon delineated is a correct one and that permanent metal monuments consisting of bars not less than one-half inch in diameter and 36 inches in length, or shorter bars of not less than one-half inch in diameter tapped over each other at least 6 inches with an over-all length of not less than 36 inches, enclosed in a concrete cylinder of at least 4 inches in diameter and 36 inches in depth have been placed at points marked thus (O) as thereon shown at all angles in the boundaries of the land platted, at all the intersections of streets, intersections of alleys, or at streets and alleys, and at the intersections of streets and alleys with the boundaries of the plat as shown on said plat.

John C. Miller  
Registered Land Surveyor, Professional Engineer  
John C. Miller Reg. Land Surveyor  
County Building, Howell Michigan



Signed and Sealed in the Presence of:  
Clayton J. Forshee (Witness)  
Constance L. Forshee (Witness)

### ACKNOWLEDGMENT

STATE OF MICHIGAN  
County of ARENAC  
On this 12th day of August, 1964, before me, a Notary Public in and for said County, personally came the above named Clayton J. Forshee and Constance L. Forshee, his wife, known to me to be the persons who executed the above dedication, and acknowledged the same to be their free act and deed.  
Alma L. Forshee (Notary Public, Arenac County)  
My Commission expires July 1, 1967

### APPROVAL BY COUNTY PLAT BOARD

This plat was approved on the 2nd day of October, 1964, by the Arenac County Plat Board

Avis Black (County Register of Deeds)  
Douglas C. Black (County Clerk)  
Harry L. Cready (County Treasurer)  
Archie McCready (County Drain Commissioner)

COPY  
Register's Office  
Arenac County, S.S.  
Plat of Elm Park Subdivision  
was Recorded this 26th day of August, A.D. 1964, at 10:00 o'clock A.M. in Liber 3 of plat on Page 15  
Allison Green, Acting Auditor General.  
By Richard E. Lemax, Plat Examiner

### CERTIFICATE AS TO STATE TRUNK LINE OR FEDERAL AID ROADS

We hereby certify that said plat appears to include land located on a state trunk line or federal aid road.

Avis Black, Reg. of Deeds  
Douglas C. Black, Co. Clerk  
Harry McCready, Co. Treasurer  
Archie McCready, Drain Comm.  
John C. Miller, State Highway Commissioner