

# NANCY PARK

A SUBDIVISION OF PART OF GOVERNMENT LOT 1 OF SECTION 1 T 20 N R 7 E  
WHITNEY TOWNSHIP ARENAC COUNTY, MICHIGAN.

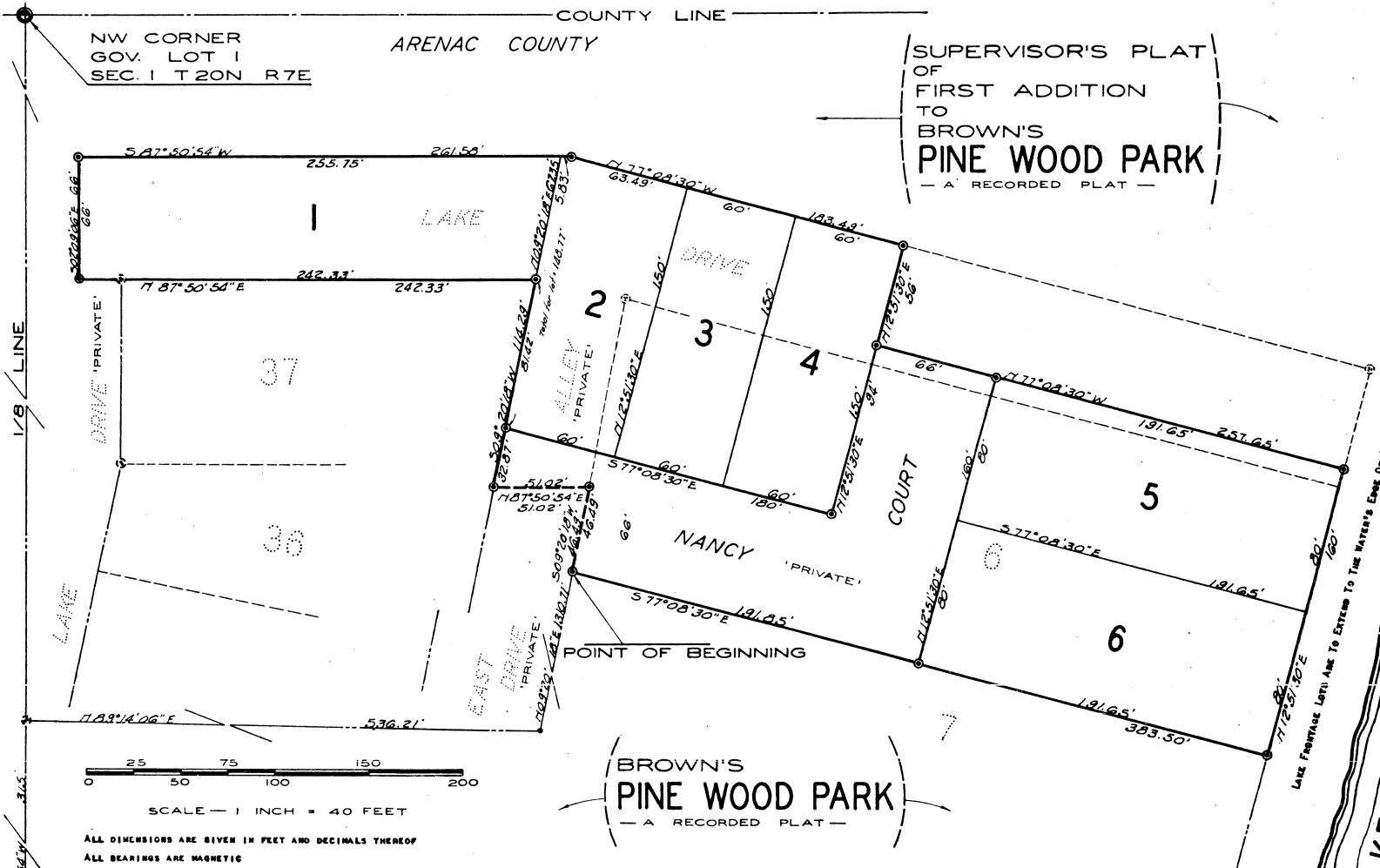
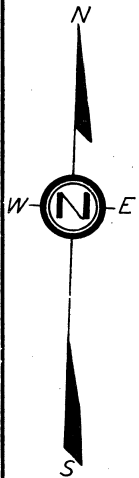
105CO COUNTY

COUNTY LINE

ARENAC COUNTY

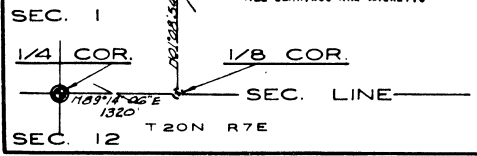
NW CORNER  
GOV. LOT 1  
SEC. 1 T 20 N R 7 E

SUPERVISOR'S PLAT  
OF  
FIRST ADDITION  
TO  
BROWN'S  
PINE WOOD PARK  
— A RECORDED PLAT —



SCALE — 1 INCH = 40 FEET  
ALL DIMENSIONS ARE GIVEN IN FEET AND DECIMALS THEREOF  
ALL BEARINGS ARE MAGNETIC

BROWN'S  
PINE WOOD PARK  
— A RECORDED PLAT —



SURVEY AND PLAT BY *R. J. Cook*  
R. J. COOK  
REGISTERED LAND SURVEYOR  
210 NORTH ADAMS STREET  
P O BOX 508  
EAST TAWAS, MICHIGAN.

LAKE FRONTAGE LEFT AS TO EXTEND TO THE WATER'S EDGE OF LAKE HURON  
LAKE  
HURON