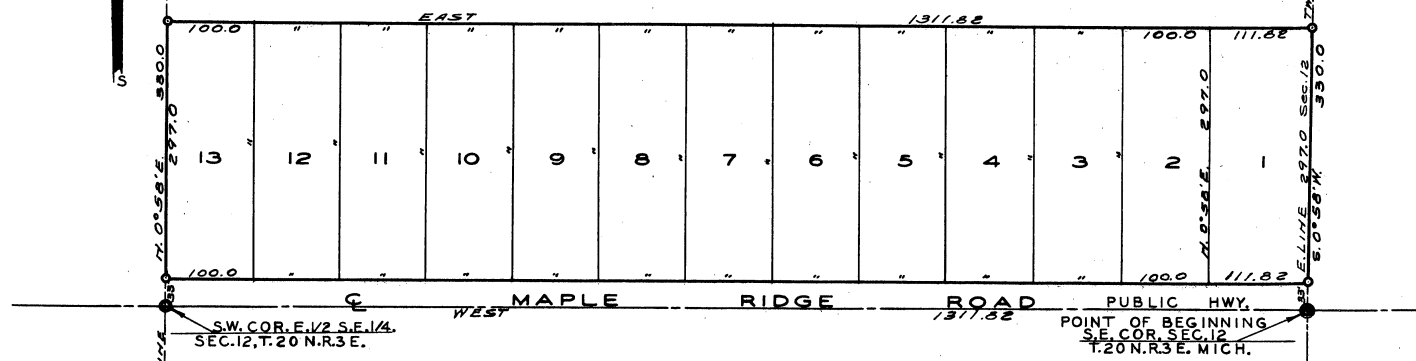
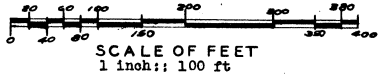


"MAPLEWOOD MESA"

A SUBDIVISION OF PART OF THE E. 1/2, S.E. 1/4, SEC. 12, T. 20 N. R. 3 E.

MOFFATT TWP. ARENAC CO. MICHIGAN.



S.W. COR. E. 1/2 S.E. 1/4 SEC. 12, T. 20 N. R. 3 E.

POINT OF BEGINNING S.E. COR. SEC. 12 T. 20 N. R. 3 E. MICH.

APPROVAL BY COUNTY PLAT BOARD

This plat was approved on the 27th day of July, 1927, by the Arenac County Plat Board

Avis Black
Avis Black (County Register of Deeds)
Douglas C. Black
Douglas C. Black (County Clerk)
Harry McCready
Harry McCready (County Treasurer)
Michael Pavelka
MICHAEL PAVELKA (County Drain Commissioner)

Ross A. Perrin
Ross A. Perrin (County Drain Commissioner)
Charles Dittman
Charles Dittman (County Drain Commissioner)

This plat was approved by the Moffatt Township Board of the Township of Moffatt at a meeting held Sept. 19, 1927 and is in compliance with Section 19a, and that the width of lots conform with the requirements of Section 30, Act 172, of 1929, as amended.

Arnold Cook
Arnold Cook Clerk

APPROVAL BY BOARD OF COUNTY ROAD COMMISSIONERS

This plat has been examined and was approved on the 20th day of Sept., 1927, by the Arenac County Board of Road Commissioners.

Ross A. Perrin
Ross Perrin (Chairman)
Charles Dittman
Charles Dittman (Member)
Michael Pavelka
Michael Pavelka (Member)

DESCRIPTION OF LAND PLATTED

The land embraced in the annexed plat of "MAPLEWOOD MESA" A subdivision of part of the E. 1/2 of the S.E. 1/4 of Section 12, T. 20 N. R. 3 E. Moffatt Twp. Arenac Co., Michigan, containing lots numbered 1 to 13 inclusive Beginning at the S.E. corner of section 12, T. 20 N. R. 3 E. Mich. running thence West along the South line of said section 12, 1311.82 ft; thence N. 0° 58' E. 330.0 ft; thence East 1311.82 ft; thence S. 0° 58' W. 330.0 ft, along the E. sec. line of section 12 to the Point of Beginning. NOTE: All dimensions are given in feet and decimals thereof.

COUNTY TREASURER'S CERTIFICATE

Office of County Treasurer, ARENAC County. I hereby certify, that there are no tax liens or titles held by the State on the lands described hereon, and that there are no tax liens or titles held by individuals on said lands, for the five years preceding the 19th day of Sept., 1927, and that the taxes for said period of five years are all paid, as shown by the records of this office. Re-certified July 19, 1927.

Harry McCready
Harry McCready (County Treasurer)

SURVEYOR'S CERTIFICATE

I hereby certify that the plot hereon delineated is a correct one and that permanent metal monuments consisting of bars not less than one-half inch in diameter and 36 inches in length, or shorter bars of not less than one-half inch in diameter lapped over each other at least 6 inches with an over-all length of not less than 36 inches, enclosed in a concrete cylinder at least 4 inches in diameter and 36 inches in depth have been placed at points marked thus (O) as thereon shown at all angles in the boundaries of the land platted, at all the intersections of streets, intersections of alleys, or of streets and alleys, and at the intersections of streets and alleys with the boundaries of the plot as shown on said plat.

John C. Miller
John C. Miller Reg. Land Surveyor
County Building, Howell Michigan
1360 W. Grand River Ave. Howell Mich.

COPY

Register's Office }
County, } S. S.
of Arencus }
was Recorded this 27th day of July A. D., 1927 at 3:30 O'clock P. M. in Liber 5 of Plats in Page 30
Avis Black
Avis Black Register of Deeds
ORIGINAL ON FILE

I hereby certify this copy is a true copy of map or plat forwarded the Register of Deeds for recording
Date October 19, 1927
FILED IN DEPT. OF TREASURY
EXAMINED AND APPROVED
Date November 15, 1927
Date October 19, 1927
Allison Green
ALLISON GREEN
STATE TREASURER
By Richard T. Long
Richard T. Long P. M. Examiner

DEDICATION

KNOW ALL MEN BY THESE PRESENTS, that we, Alvin C. Forshee and Laura L. Forshee, his wife, and Robert M. Hunt, a single man, as proprietors, have caused the land embraced in the annexed plat to be surveyed, laid out and platted, to be known as "MAPLEWOOD MESA" A subdivision of part of the E. 1/2 of the S.E. 1/4 of Sec. 12, T. 20 N. R. 3 E. Moffatt Twp. Arenac Co., Michigan, and that the streets County Road as shown on said plat are hereby dedicated to the use of the public

Signed and Sealed in the Presence of:
Alvin C. Forshee (L.S.)
Laura L. Forshee (L.S.)
Robert M. Hunt (L.S.)
Alvin C. Forshee
R. R. # 2, Hale, Michigan
Laura L. Forshee
R. R. # 2, Hale, Michigan
Robert M. Hunt
R. R. # 2, Hale, Michigan

ACKNOWLEDGMENT

STATE OF MICHIGAN }
County of ARENAC } ss.
On this 22nd day of Feb., 1928, before me, a Notary Public in and for said County, personally came the above named Alvin C. Forshee and Laura L. Forshee, his wife and Robert M. Hunt, a single man

known to me to be the persons who executed the above dedication, and acknowledged the same to be their free act and deed.
Alvin C. Forshee
Laura L. Forshee
Notary Public, ARENAC County
My Commission expires 1928

49536