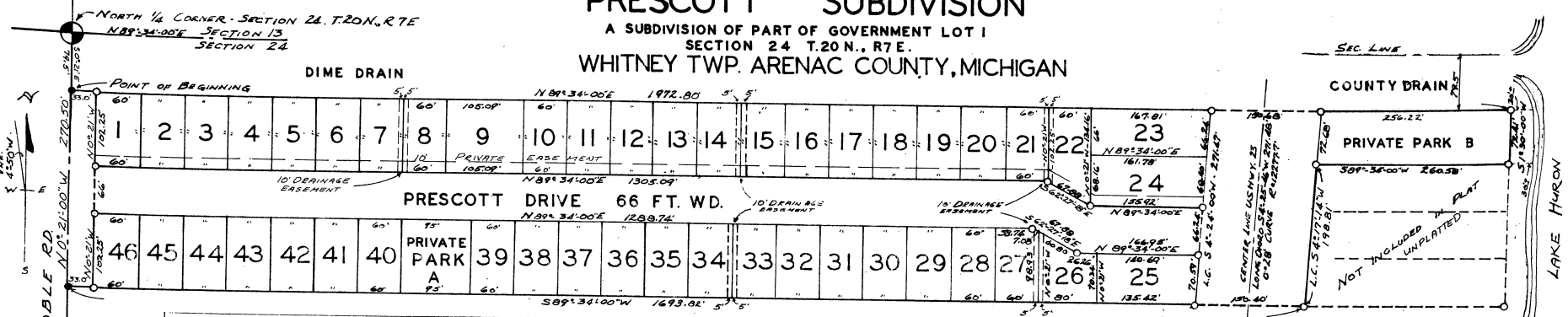
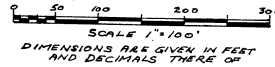


# PRESCOTT SUBDIVISION

A SUBDIVISION OF PART OF GOVERNMENT LOT 1  
SECTION 24 T.20 N., R.7 E.  
WHITNEY TWP. ARENAC COUNTY, MICHIGAN



LOCATION	ARC	CHORD	BEARING
LOT 23	66.22	62.22	S 4° 52' 31" W
LOT 24	66.24	62.24	S 4° 38' 55" W
DRIVE	66.24	66.24	S 4° 5' 05" W
LOT 25	70.59	70.59	S 3° 56' 03" W
W. R.O.W.	271.47	271.47	S 4° 32' 00" W
PARK 'B'	72.68	72.68	S 4° 55' 32" W
E. R.O.W.	198.81	198.81	S 4° 17' 14" W
E. U.S. 23	271.48	271.48	S 4° 25' 46" W 20° 42' R
E. U.S. 23 - PC SPA 502+774 - PT SPA 687+31 TAN. 22.423 - L 4.43571 - R 12.2777 MSHD DATA			



UNPLATTED

**CERTIFICATE OF MUNICIPAL APPROVAL**

This plat was approved by the Whitney Township Board of the Township of Whitney at a meeting held March 10, 1967, and is in compliance with Section 17a, and that the width of lots conform with the requirements of Section 30, Act 172, of 1929, as amended.

*Julia Chirot*  
Julia Chirot Clerk.

**COUNTY TREASURER'S CERTIFICATE**

Office of County Treasurer, Arenac County. I hereby certify, that there are no tax liens or titles held by the State on the lands described hereon, and that there are no tax liens or titles held by individuals on said lands, for the five years preceding the 10th day of March, 1967, and that the taxes for said period of five years are all paid, as shown by the records of this office. This certificate does not apply to taxes, if any, now in process of collection by township, city or village collecting officers.

*Harry M. Gready*  
Harry McGready (County Treasurer)

**DESCRIPTION OF LAND PLATTED**

The land embraced in the annexed plat of PRESCOTT SUBDIVISION... a subdivision of part of Government Lot 1... Section 24, T.20 N., R.7 E., Whitney Township, Arenac County, Michigan... is described as follows: Commencing at the North one quarter corner of said Section 24; Thence S 0° 12' 00" E 79.50 feet along the MS 1/2 Line of said Section 24 to a point on the centerline of Noble Road, a County Road, said point being the point of beginning; Thence N 89° 34' 00" E 1,972.80 feet to a point on the shore traverse of Lake Huron; Thence S 1° 30' 00" W 72.41 feet along said shore traverse line; Thence S 89° 34' 00" W 260.58 feet, leaving the said shore traverse line; Thence 198.81 feet along the east R.O.W. line of U.S. Highway 23 to a 0° 28' 10" curve to the LEFT whose long chord is 198.81 feet long and bears S 4° 17' 14" W; Thence S 89° 34' 00" W 1,693.82 feet to the east R.O.W. line of county road; Thence N 0° 21' 00" W 270.50 feet to the point of beginning. This plat contains 46 lots numbered consecutively 1 through 46, Prescott Drive, Parks A & B, the East 33.0 feet of Noble Road and Highway U.S. 23, Private Park B extends from U.S. 23 to Lake Huron.

The bearings on this plat were obtained from compass readings using a 4° 50' west declination and transit angles. The bearings are magnetic.

All dimensions are given in feet and decimals thereof.

**APPROVAL BY COUNTY PLAT BOARD**

This plat was approved on the 19th day of July, 1967, by the Arenac County Plat Board

*Avis Black* (County Register of Deeds)  
*Douglas C. Black* (County Clerk)  
*Harry M. Gready* (County Treasurer)  
*Ross A. Perrin* (County Drain Commissioner)  
*Charles Dittenber* (County Drain Commissioner)  
*Michael Pavelka* (County Drain Commissioner)

**APPROVAL BY BOARD OF COUNTY ROAD COMMISSIONERS**

This plat has been examined and was approved on the 5th day of June, 1967, by the Arenac County Board of Road Commissioners.

*Ross A. Perrin* (Chairman)  
*Charles Dittenber* (Member)  
*Michael Pavelka* (Member)

**CERTIFICATE AS TO STATE TRUNK LINE OR FEDERAL AID ROADS**

We hereby certify that said plat appears to include land located on a state trunk line or federal aid road.

*Avis Black* (County Register of Deeds)  
*Douglas C. Black* (County Clerk)  
*Harry M. Gready* (County Treasurer)  
*Ross A. Perrin* (County Drain Commissioner)  
*Charles Dittenber* (County Drain Commissioner)  
*Michael Pavelka* (County Drain Commissioner)

APPROVED 8/6/67 DATE

MICHIGAN STATE HIGHWAY COMMISSION  
*Henrik E. Stabeth*  
HENRIK E. STASETH  
Acting State Highway Director

Prepared and Drafted By: Otis D. Love No. 5652  
Registered Land Surveyor & Professional Engineer  
705 E. Lincoln St., East Tawas, Michigan

49617

*Otis D. Love*