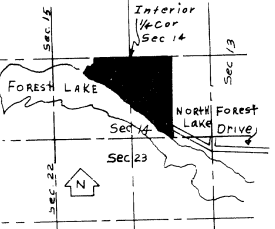
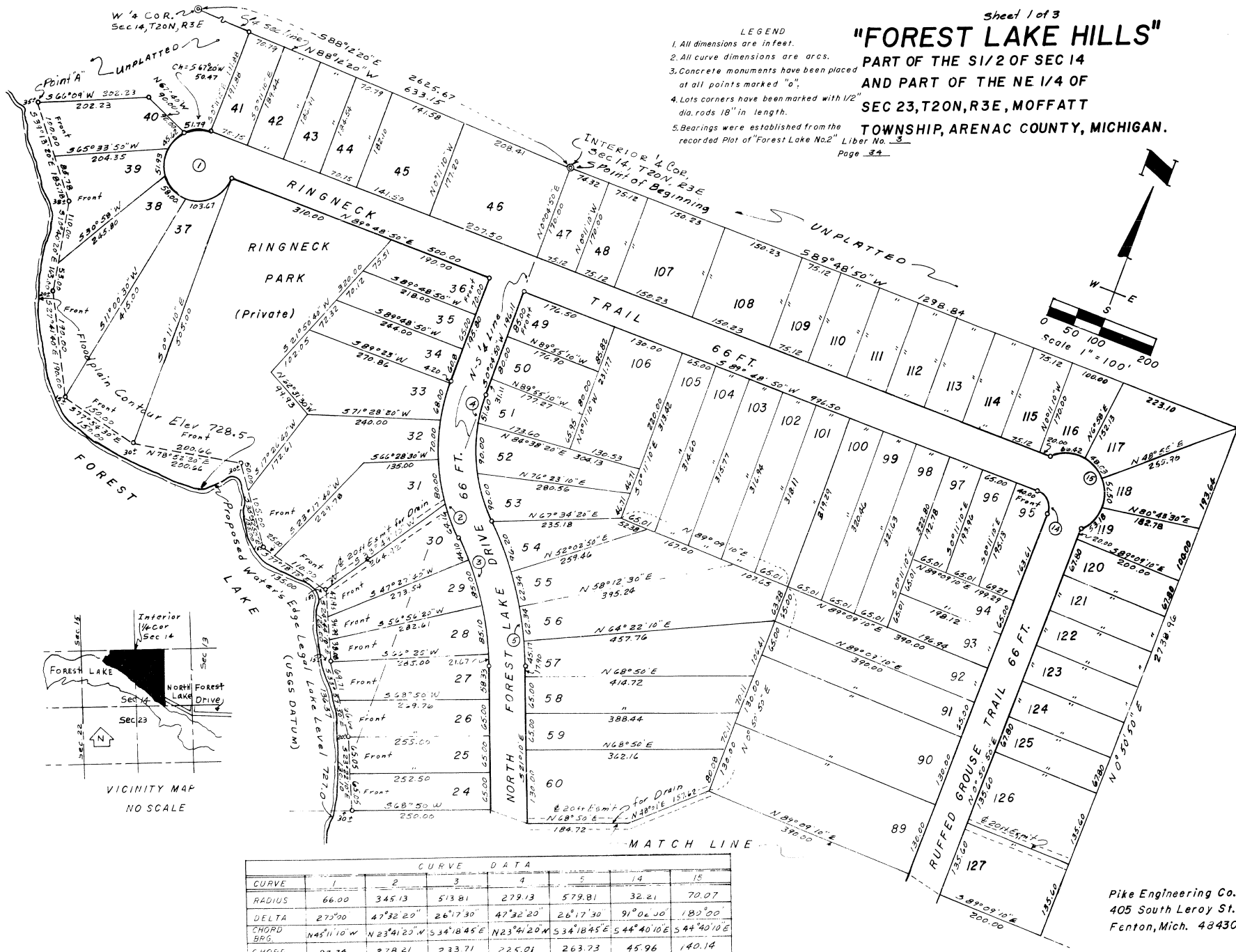


"FOREST LAKE HILLS"

PART OF THE S1/2 OF SEC 14
AND PART OF THE NE 1/4 OF
SEC 23, T20N, R3E, MOFFATT

TOWNSHIP, ARENAC COUNTY, MICHIGAN.

- LEGEND
1. All dimensions are in feet.
 2. All curve dimensions are arcs.
 3. Concrete monuments have been placed at all points marked "o".
 4. Lots corners have been marked with 1/2" dia. rods 18" in length.
 5. Bearings were established from the recorded Plot of "Forest Lake No. 2" Liber No. 3



VICINITY MAP
NO SCALE

| CURVE | 1 | 2 | 3 | 4 | 5 | 14 | 15 |
|------------|-------------|-------------|-------------|-------------|-------------|-------------|-------------|
| RADIUS | 66.00 | 345.13 | 513.81 | 279.13 | 579.81 | 32.21 | 70.07 |
| DELTA | 275°50' | 47°32'20" | 26°17'30" | 47°32'20" | 26°17'30" | 91°02'10" | 180°00' |
| CHORD BRG. | N45°11'10"W | N23°41'25"N | S34°18'45"E | N23°41'20"W | S34°18'45"E | S44°40'10"E | S44°40'10"E |
| CHORD | 93.34 | 278.21 | 233.71 | 225.01 | 263.73 | 45.96 | 140.14 |

Pike Engineering Co.
405 South Leroy St.
Fenton, Mich. 48430