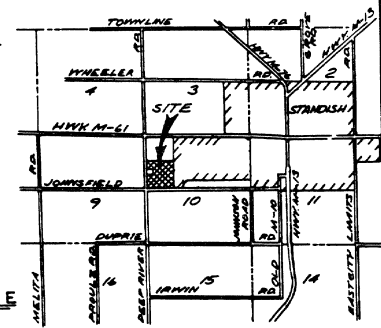
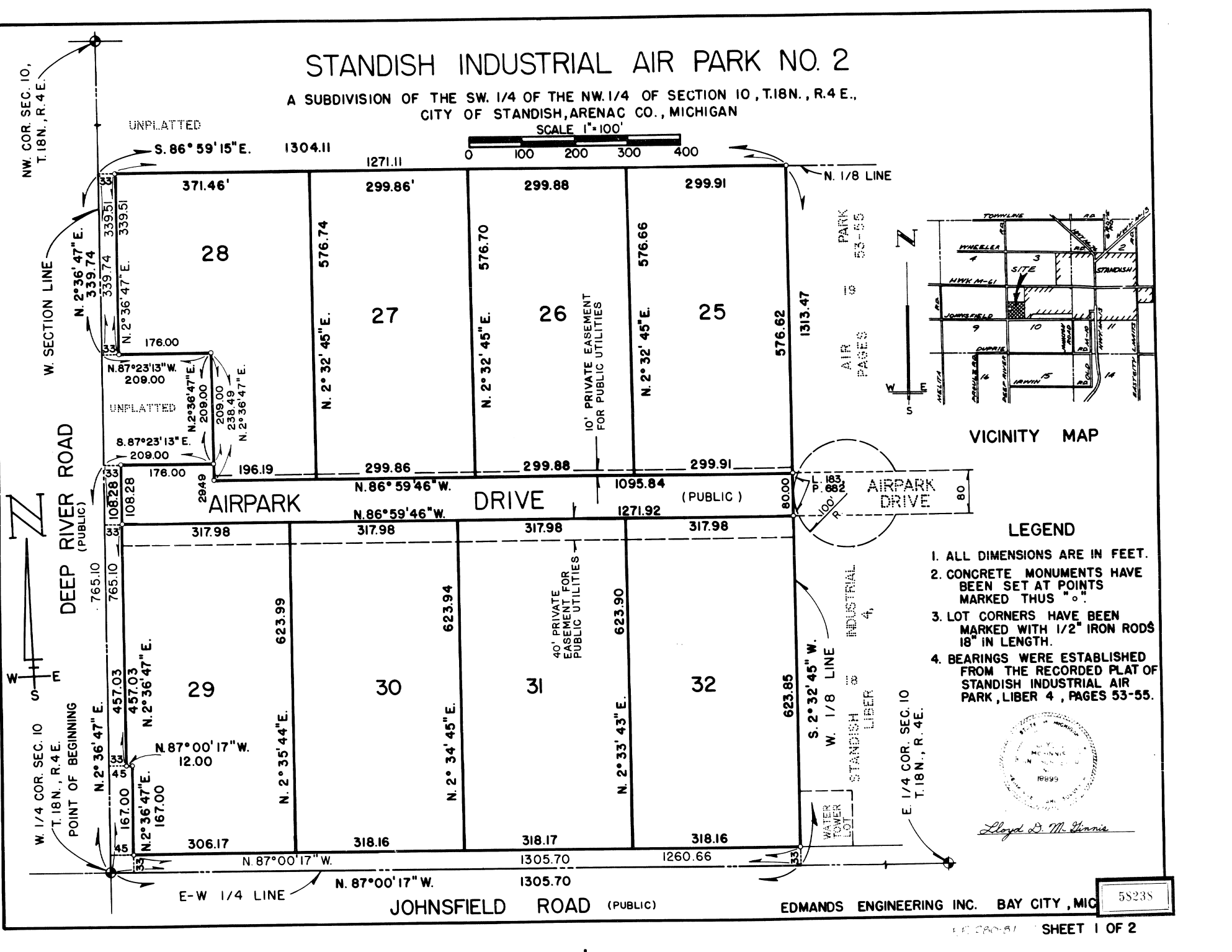
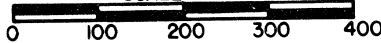


# STANDISH INDUSTRIAL AIR PARK NO. 2

A SUBDIVISION OF THE SW. 1/4 OF THE NW. 1/4 OF SECTION 10, T.18N., R.4E.,  
CITY OF STANDISH, ARENAC CO., MICHIGAN

SCALE 1"=100'



VICINITY MAP

### LEGEND

1. ALL DIMENSIONS ARE IN FEET.
2. CONCRETE MONUMENTS HAVE BEEN SET AT POINTS MARKED THUS "o".
3. LOT CORNERS HAVE BEEN MARKED WITH 1/2" IRON RODS 18" IN LENGTH.
4. BEARINGS WERE ESTABLISHED FROM THE RECORDED PLAT OF STANDISH INDUSTRIAL AIR PARK, LIBER 4, PAGES 53-55.



Lloyd D. M. Dennis

58235

EDMANDS ENGINEERING INC. BAY CITY, MICH