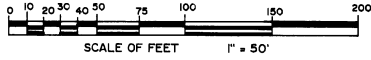


LUCKY THREE SUBDIVISION

A SUBDIVISION OF PART OF GOVERNMENT LOT 3 OF SECTION 2 AND PART OF GOVERNMENT LOT 1 OF SECTION 11, T. 19 N. R. 7 E., SIMS TOWNSHIP, ARENAC COUNTY, MICHIGAN

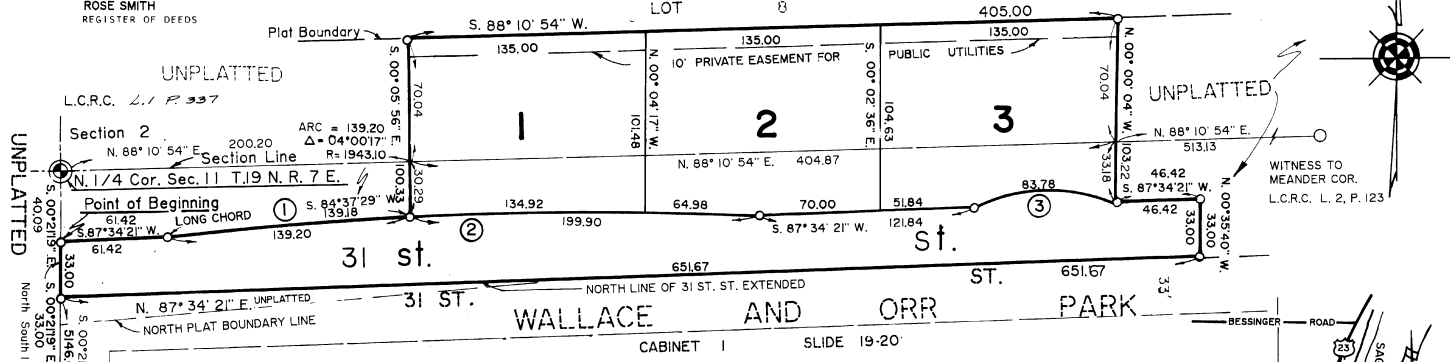
RECORDING CERTIFICATE

STATE OF MICHIGAN)
ARENAC COUNTY)
THIS PLAT WAS RECEIVED FOR RECORD IN THE
20th DAY OF September 1997, AT 1:30 P.M.
RECORDED IN LIBER 364 OF PLATS IN PAGES
CABINET ONE ON SLIDE MM
ROSE SMITH
REGISTER OF DEEDS



CABINET 1 SLIDE 135-136

LUCKY EIGHT SUBDIVISION

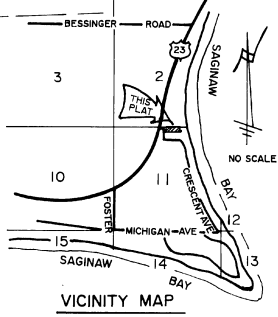


WITNESS TO MEANDER COR.
L.C.R.C. L. 2, P. 123

CURVE DATA				
CURVE	Δ	RADIUS	CHORD	CHORD BEARING
1	04°00'17"	1943.10	139.18	S. 84°37'29" W.
2	10°00'00"	1943.10	338.70	S. 87°34'21" W.
3	24°00'00"	200.00	83.16	S. 87°34'21" W.

PLAT LEGEND

- ALL DIMENSIONS ARE IN FEET.
- CONCRETE MONUMENTS CONSISTING OF A SOLID STEEL ROD 1/2 INCH IN DIAMETER AND COMPLETELY ENCASED IN CONCRETE 4 INCHES IN DIAMETER, HAVE BEEN PLACED AT ALL POINTS MARKED '0'.
- LOT CORNERS HAVE BEEN MARKED WITH 1/2 INCH DIAMETER STEEL RODS 18 INCHES IN LENGTH.
- BEARINGS ARE BASED ON THE RECORDED PLAT OF "LUCKY EIGHT SUBDIVISION", AS RECORDED IN CABINET 1 ON SLIDE 135-136 OF ARENAC COUNTY RECORDS.
- ALL CURVILINEAR MEASUREMENTS ARE ARC DISTANCES.
- R = RADIUS



SURVEYORS CERTIFICATE

I, RICHARD L. MILLER, SURVEYOR, CERTIFY: THAT I HAVE SURVEYED, DIVIDED AND MAPPED THE LAND SHOWN ON THIS PLAT DESCRIBED AS FOLLOWS: "LUCKY THREE SUBDIVISION", A SUBDIVISION OF PART OF GOVERNMENT LOT 3 OF SECTION 2 AND PART OF GOVERNMENT LOT 1 OF SECTION 11, T. 19 N. R. 7 E., SIMS TOWNSHIP, ARENAC COUNTY, MICHIGAN BEING FURTHER DESCRIBED AS: COMMENCING AT THE 1/4 CORNER COMMON TO SAID SECTIONS 2 AND 11, THENCE S. 00° 21' 19" E., ALONG THE NORTH-SOUTH 1/4 LINE OF SAID SECTION 11, 40.88 FEET TO THE POINT OF BEGINNING, THENCE CONTINUING S. 00° 21' 19" E., 33.00 FEET, THENCE N. 87° 34' 21" W., 65.17 FEET, THENCE N. 00° 35' 40" W., 33.00 FEET, THENCE S. 87° 34' 21" W., 46.42 FEET, THENCE N. 00° 04' 04" W., 103.22 FEET, THENCE ALONG THE SOUTHWEST PLAT BOUNDARY OF "LUCKY EIGHT SUBDIVISION" AS RECORDED IN CABINET 1 ON SLIDE 135-136, ARENAC COUNTY RECORDS, S. 88° 10' 54" W., 405.00 FEET, THENCE LEAVING SAID PLAT BOUNDARY S. 00° 05' 56" E., 70.04 FEET, 100.33 FEET, THENCE ALONG THE ARC OF A CURVE TO THE LEFT 50° E., 100.33 FEET, THENCE ALONG THE ARC OF A CURVE TO THE LEFT WITH RADIUS OF 1943.10 FEET, A DISTANCE OF 139.20 FEET, THE LONG CHORD BEING S. 84° 37' 29" W., 139.18 FEET, THENCE S. 87° 34' 21" W., 61.42 FEET TO THE POINT OF BEGINNING. CONTAINING 3 LOTS, BEING LOTS 1 THROUGH 3 INCLUSIVE.

THIS PLAT IS SUBJECT TO RESTRICTIONS AS REQUIRED BY ACT 288 OF 1967, AS AMENDED ON CERTAIN LOTS WITH RESPECT TO THE REQUIREMENTS OF THE MICHIGAN DEPARTMENT OF ENVIRONMENTAL QUALITY, WHICH ARE RECORDED IN LIBER 364, PAGE 570-573 OF RECORDS OF THIS COUNTY.

PROPRIETORS CERTIFICATE

WE, AS PROPRIETORS, CERTIFY THAT WE CAUSED THE LAND EMBRACED IN THIS PLAT TO BE SURVEYED, DIVIDED, MAPPED AND DEDICATED AS REPRESENTED ON THIS PLAT AND THAT THE PUBLIC UTILITY EASEMENTS ARE PRIVATE EASEMENTS AND THAT ALL OTHER EASEMENTS ARE FOR THE USE SHOWN ON THE PLAT AND THAT 31ST ST. AS SHOWN, IS HEREBY DEDICATED TO THE USE OF THE PUBLIC.

CERTIFICATE OF COUNTY ROAD COMMISSION

APPROVED ON OCTOBER 7, 1996 AS COMPLYING WITH SECTION 183 OF ACT 288 P.A. 1967 AND THE APPLICABLE PUBLISHED RULES AND REGULATIONS OF THE BOARD OF COUNTY ROAD COMMISSIONERS OF ARENAC COUNTY.
Donald Fales CHAIRMAN
Michael Pavelka MEMBER
Horatio S. Davis MEMBER

COUNTY PLAT BOARD CERTIFICATE

THIS PLAT HAS BEEN REVIEWED AND IS APPROVED BY THE ARENAC COUNTY PLAT BOARD ON October 14, 1996 AS BEING IN COMPLIANCE WITH ALL THE PROVISIONS OF ACT 288 P.A. 1967 AND THE PLAT BOARD'S APPLICABLE RULES AND REGULATIONS.
Rose Smith REGISTER OF DEEDS
Pauline M. Hall COUNTY TREASURER
Thomas J. Dyer COUNTY CLERK

COUNTY DRAIN COMMISSIONERS CERTIFICATE

STATE OF MICHIGAN)
ARENAC COUNTY)
APPROVED ON OCTOBER 7, 1996 AS COMPLYING WITH SECTION 192 OF ACT 288 P.A. 1967 AND THE APPLICABLE RULES AND REGULATIONS PUBLISHED BY MY OFFICE IN THE COUNTY OF ARENAC.
Ricky Rockwell DRAIN COMMISSIONER

COUNTY TREASURERS CERTIFICATE

THE RECORDS IN MY OFFICE SHOW NO UNPAID TAXES OR SPECIAL ASSESSMENTS FOR THE FIVE YEARS PRECEDING OCTOBER 7, 1996 INVOLVING THE LAND INCLUDED IN THIS PLAT.
Pauline M. Hall COUNTY TREASURER
ARENAC COUNTY

PROPRIETORS CERTIFICATE

I, AS PROPRIETOR, CERTIFY THAT I CAUSED THE LAND EMBRACED IN THIS PLAT TO BE SURVEYED, DIVIDED, MAPPED AND DEDICATED AS REPRESENTED ON THIS PLAT AND THAT 31ST ST. IS FOR THE USE OF THE PUBLIC; THAT THE PUBLIC UTILITY EASEMENTS ARE PRIVATE EASEMENTS AND THAT ALL OTHER EASEMENTS ARE FOR THE USES SHOWN ON THE PLAT.
Lincoln M. Ennes TRUSTEE OF THE LINCOLN M. ENNES TRUST
501 EAST SMITH STREET
AUGER, MICHIGAN 48703
L. 507 P. 452-463-454
ARENAC COUNTY RECORDS

ACKNOWLEDGEMENT

STATE OF MICHIGAN)
ARENAC COUNTY)
PERSONALLY CAME BEFORE ME THIS 7th DAY OF October 1996 THE ABOVE NAMED CO-PARTNERSHIP TO ME KNOWN TO BE THE PERSON WHO EXECUTED THE FOREGOING INSTRUMENT AND TO ME KNOWN TO BE SUCH CO-PARTNERS OF SAID CO-PARTNERSHIP AND ACKNOWLEDGED THAT THEY EXECUTED THE FOREGOING INSTRUMENT AS SUCH CO-PARTNERS AS THE FREE ACT AND DEED OF SAID CO-PARTNERSHIP.
Richard L. Miller NOTARY PUBLIC
OSCODA COUNTY

ACKNOWLEDGEMENT

STATE OF MICHIGAN)
ARENAC COUNTY)
PERSONALLY CAME BEFORE ME THIS 7th DAY OF October 1996 THE ABOVE NAMED CO-PARTNERSHIP TO ME KNOWN TO BE THE PERSON WHO EXECUTED THE FOREGOING INSTRUMENT, AND TO ME KNOWN TO BE SUCH CO-PARTNERS OF SAID CO-PARTNERSHIP AS SUCH TRUSTEE AS HIS FREE ACT AND DEED.
Gary M. Thomas NOTARY PUBLIC
ARENAC COUNTY
MY COMMISSION EXPIRES: DECEMBER 14, 1996

THAT I HAVE MADE SUCH SURVEY, LAND-DIVISION AND PLAT BY THE DIRECTION OF THE OWNERS OF SUCH LAND.

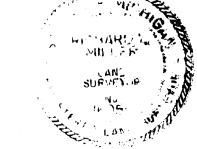
THAT SUCH PLAT IS A CORRECT REPRESENTATION OF ALL THE EXTERIOR BOUNDARIES OF THE LAND SURVEYED AND THE SUBDIVISION OF IT.

THAT THE MONUMENTS AND LOT MARKERS HAVE BEEN LOCATED IN THE GROUND OR THAT SURETY HAS BEEN DEPOSITED WITH THE MUNICIPALITY, AS REQUIRED BY SECTION 125 OF THE ACT.

THAT THE ACCURACY OF SURVEY IS WITHIN THE LIMITS REQUIRED BY SECTION 126 OF THE ACT.

THAT THE BEARINGS SHOWN ON THIS PLAT ARE EXPRESSED AS REQUIRED BY SECTION 128 (3) OF THE ACT AND AS EXPLAINED IN THE LEGEND.

DATE: 10-4-96



RICHARD L. MILLER
NO. 16050

CERTIFICATE OF MUNICIPAL APPROVAL

I CERTIFY THAT THIS PLAT WAS APPROVED BY THE TOWNSHIP BOARD OF THE TOWNSHIP OF SIMS AT A MEETING HELD OCTOBER 7, 1996 AND WAS REVIEWED AND FOUND TO BE IN COMPLIANCE WITH ACT 288 P.A. 1967. CENTRAL MICHIGAN DISTRICT HEALTH DEPARTMENT APPROVAL OF PRELIMINARY PLAT ON SEPTEMBER 13, 1996

Jennifer Dyer
CLERK

CERTIFIED TRUE COPY OF RECORDED PLAT BY DEPARTMENT OF CONSUMER AND INDUSTRY SERVICES

BY: Maynard R. Dyer, P.S.O. MANAGER
SUBDIVISION CONTROL UNIT

DATE: 3-5-97

64107

MY COMMISSION EXPIRES: Nov 11, 1998