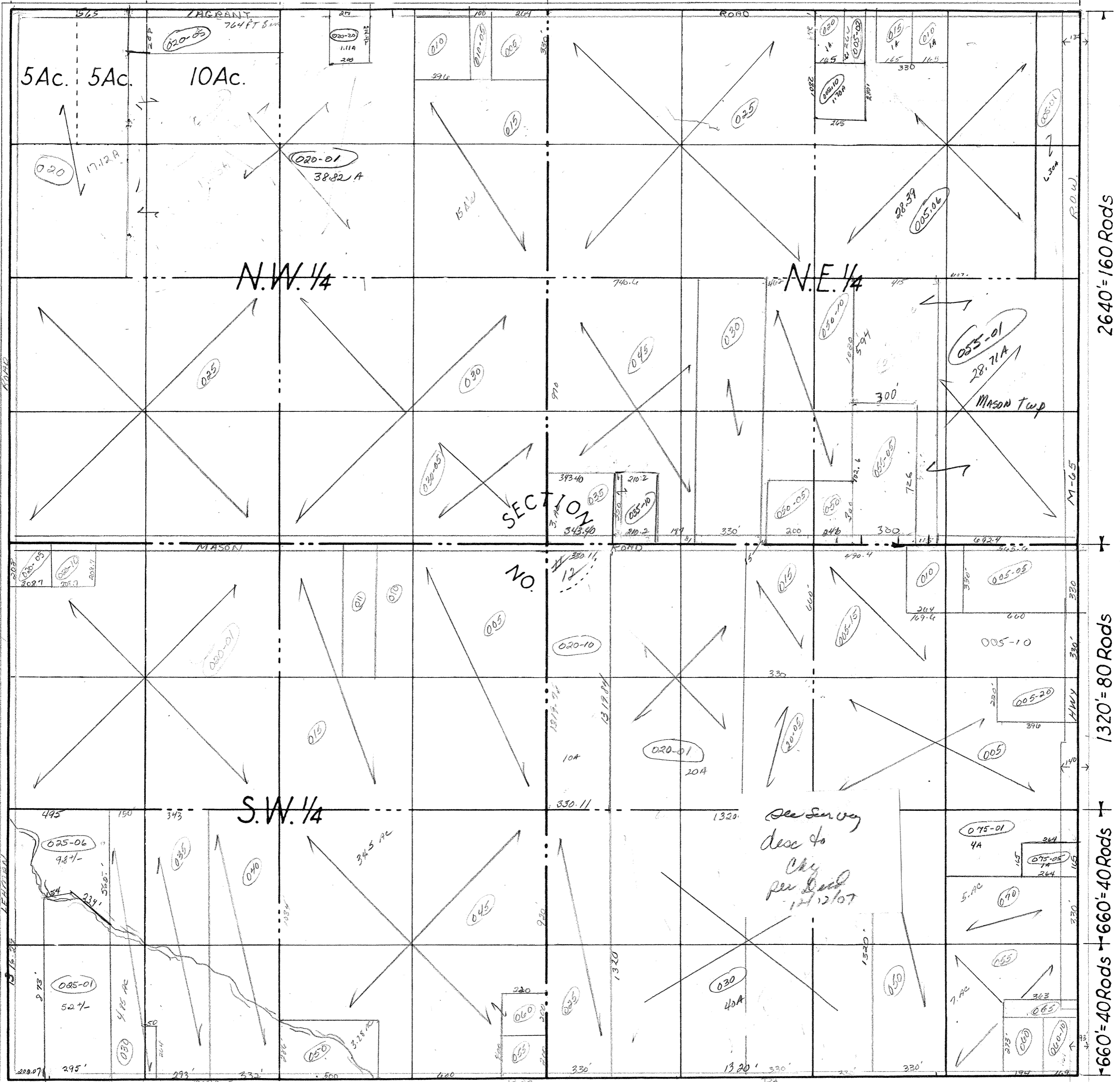


660' = 40 Rods 660' = 40 Rods

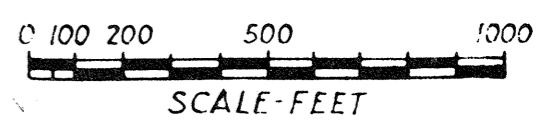
1320' = 80 Rods

2640' = 160 Rods



2640' = 160 Rods  
1320' = 80 Rods  
660' = 40 Rods

COUNTY Arenac MICH.  
 TOWNSHIP Mason Twp.  
 RANGE Town R5E  
 AREA Sec # 12



NO. ....

DATE .....