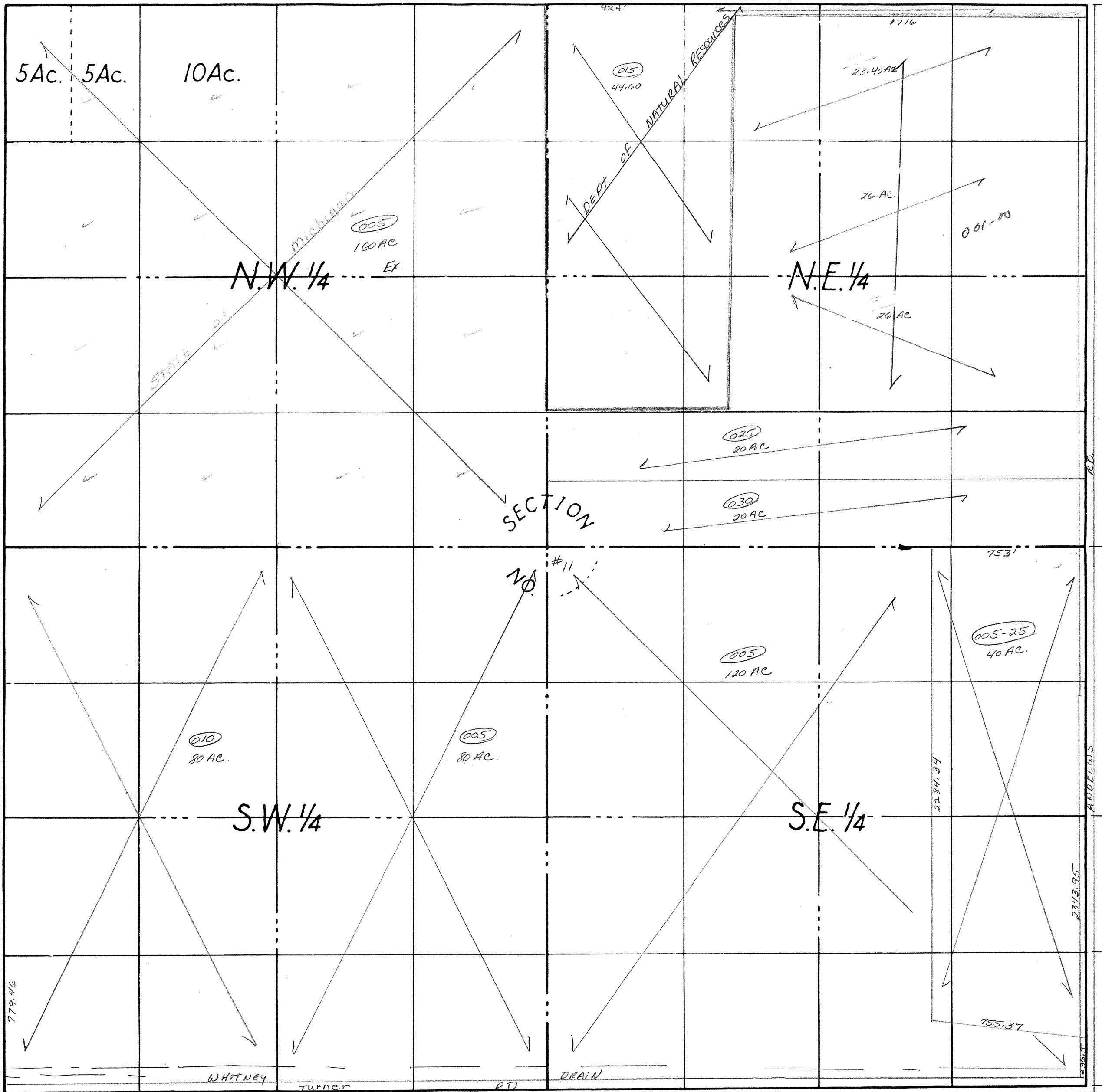


660' = 40 Rods 660' = 40 Rods 1320' = 80 Rods 2640' = 160 Rods



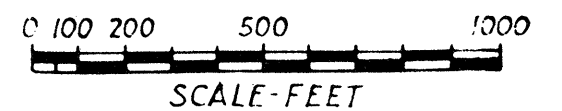
2640' = 160 Rods

1320' = 80 Rods

660' = 40 Rods

660' = 40 Rods

COUNTY ARENAS MICH.
 TOWNSHIP WHITNEY TWP.
 RANGE T20 N R7E
 SECTION #11
 AREA



NO.

DATE 8-3-92 L.M.