

BADOURS RIVERSIDE SUBDIVISION

A SUBDIVISION OF PART OF GOVERNMENT LOTS 3 AND 4 SECTION 19 T19N R7E
SIMS TOWNSHIP ARENAC COUNTY, MICHIGAN.

DEDICATION

KNOW ALL MEN BY THESE PRESENTS, That we Albert Badour Jr. a single man and Sue Badour as proprietor, and Anna Badour wife of said Sue Badour, have caused the land embraced in the annexed plat to be surveyed, laid out and plotted, to be known as Badours Riverside Subdivision, a subdivision of part of Government Lots 3 and 4 section 19 T19N R7E Sims Township Arenac County, Michigan and that the road, drive and lines as shown on said plat are hereby dedicated to the use of the public.

Signed and Sealed in Presence of

<u>H. W. Cooke</u> H. W. Cooke	<u>Albert Badour Jr.</u> Albert Badour Jr.
<u>Eleanor I. Cooke</u> Eleanor I. Cooke	<u>Sue Badour</u> Sue Badour
<u>Arlene Ramsey</u> Arlene Ramsey	<u>Anna Badour</u> Anna Badour

STATE OF MICHIGAN, } ss.
County of Iosco

On this first day of July 1940 before me, a Notary Public in and for said county, personally came the above named Albert Badour Jr. a single man and Sue Badour and Anna Badour wife of said Sue Badour, known to me to be the persons who executed the above dedication, and acknowledged the same to be their free act and deed.

Samuel J. Cooke
Notary Public Iosco County, Michigan.

My Commission expires June 23, 1943.

DESCRIPTION OF LAND PLATTED

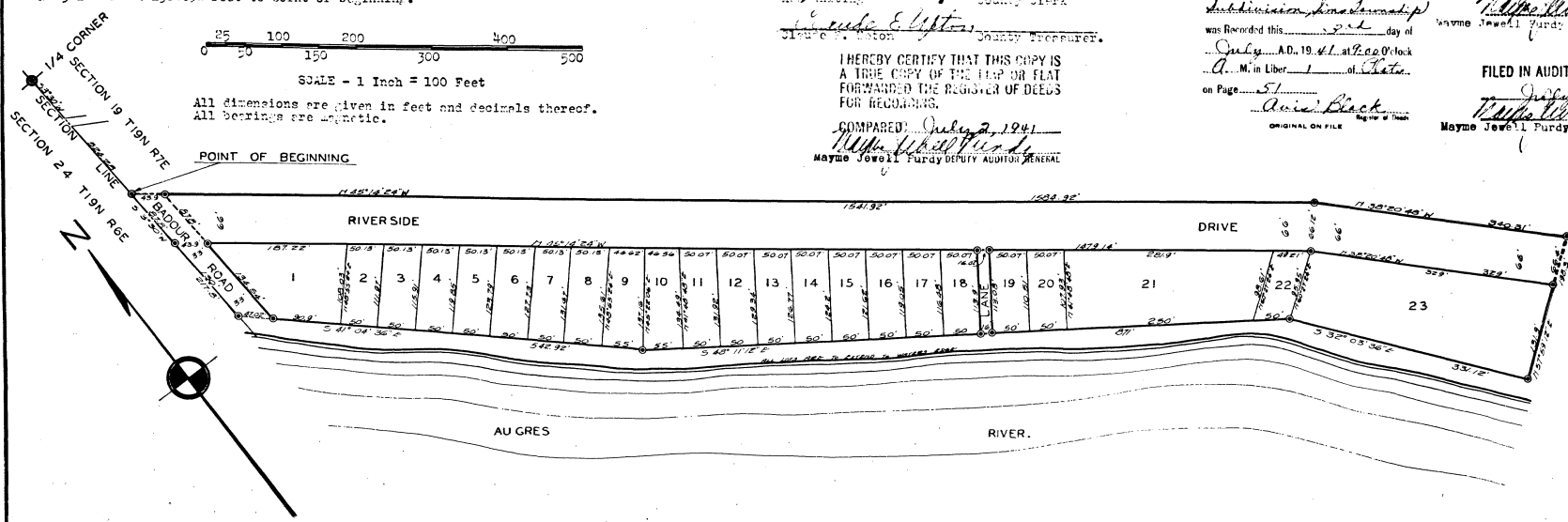
The land embraced in the annexed plat of Badour's RIVERSIDE SUBDIVISION a subdivision of part of Government Lots 3 and 4 section 19 T19N R7E Sims Township Arenac County, Michigan is described as follows: From the N corner common to section 18 T19N R7E and section 24 T19N R6E thence S 73° 30' W 224.28 feet to point of beginning, thence S 73° 30' W 217.8 feet, thence S 41° 01' 30" E 242.20 feet, thence S 42° 11' 10" E 371 feet, thence S 32° 01' 30" E 231.10 feet, thence S 73° 30' W 192.3 feet, thence N 33° 01' 30" W 340.31 feet, thence S 45° 14' 20" E 124.20 feet to point of beginning.



SCALE - 1 Inch = 100 Feet

All dimensions are given in feet and decimals thereof.
All bearings are magnetic.

POINT OF BEGINNING



COUNTY TREASURER'S CERTIFICATE RELATIVE TO TAXES

Office of County Treasurer, Arenac County.
I hereby certify that there are no tax liens or titles held by the State on the lands described herein, and that there are no tax liens or titles held by individuals on said lands, for the five years preceding the day of July 1940 and that the taxes for said period of five years are paid, as shown by the records of this office. This certificate does not apply to taxes, if any, now in process of collection by Township collecting officers.

Claude E. Lytton
Claude E. Lytton County Treasurer.

RESOLUTIONS OF MEMBERS OF COUNTY BOARD COMMISSIONERS

This plat has been examined and was approved on the 4th day of July 1940 by the Arenac County Board of Road Commissioners.

H. J. Surrmann
H. J. Surrmann Chairman.

Earl H. Foster
Earl H. Foster Member.

Arthur Warren
Arthur Warren Member.

CERTIFICATE OF MUNICIPAL OFFICIAL

This plat was approved by the Township Board of the Township of Sims at a meeting held July 11, 1940.

Philip C. Littenber
Philip C. Littenber Chairman of Board.

CERTIFICATE OF REGISTERED LAND SURVEYOR

This plat was approved on the 23rd day of July 1940.

Harry E. Converse
Harry E. Converse State of Registrar.

Arthur Lytton
Arthur Lytton County Clerk.

Claude E. Lytton
Claude E. Lytton County Treasurer.

I HEREBY CERTIFY THAT THIS COPY IS A TRUE COPY OF THE MAP OR PLAT FORWARDED THE REGISTER OF DEEDS FOR RECORDING.

COMPARED: July 2, 1941
Mayme Jewell Purdy
Mayme Jewell Purdy DEPUTY AUDITOR GENERAL

CERTIFICATE AS TO COUNTY ROADS

We hereby certify that said plat appears to include land located on a county road.

Harry E. Converse
Harry E. Converse

Claude E. Lytton
Claude E. Lytton

Clara E. Upton
Clara E. Upton County Plat Board.

Examined and approved July 11, 1940

H. J. Surrmann
H. J. Surrmann

Earl H. Foster
Earl H. Foster

Arthur Warren
Arthur Warren County Road Commission.

SURVEYOR'S CERTIFICATE

I hereby certify that the plat hereon delineated is a correct one and that permanent metal monuments consisting of bars not less than one-half inch in diameter and 48 inches in length encased in a concrete cylinder at least 4 inches in diameter and 48 inches in depth have been placed at points marked thus on thereon shown at all angles in the boundaries of the land platted, at all the intersections of streets, of street and land, and at the intersections of streets with the boundaries of the plat as shown on said plat.

H. W. Cooke
H. W. Cooke Registered Land Surveyor.

Register's Office
Arenac County, ss.

Plat of Badour's Riverside Subdivision

was recorded this 2nd day of July, A.D. 1940 at 2:00 o'clock

A.M. in Liber of Books

on Page 51

Archie Black
ORIGINAL ON FILE

Examined and Approved

July 2, 1941

Mayme Jewell Purdy
Mayme Jewell Purdy Deputy Auditor General

FILED IN AUDITOR GENERAL'S DEPT.

July 15, 1941

Mayme Jewell Purdy
Mayme Jewell Purdy DEPUTY AUDITOR GENERAL