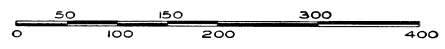
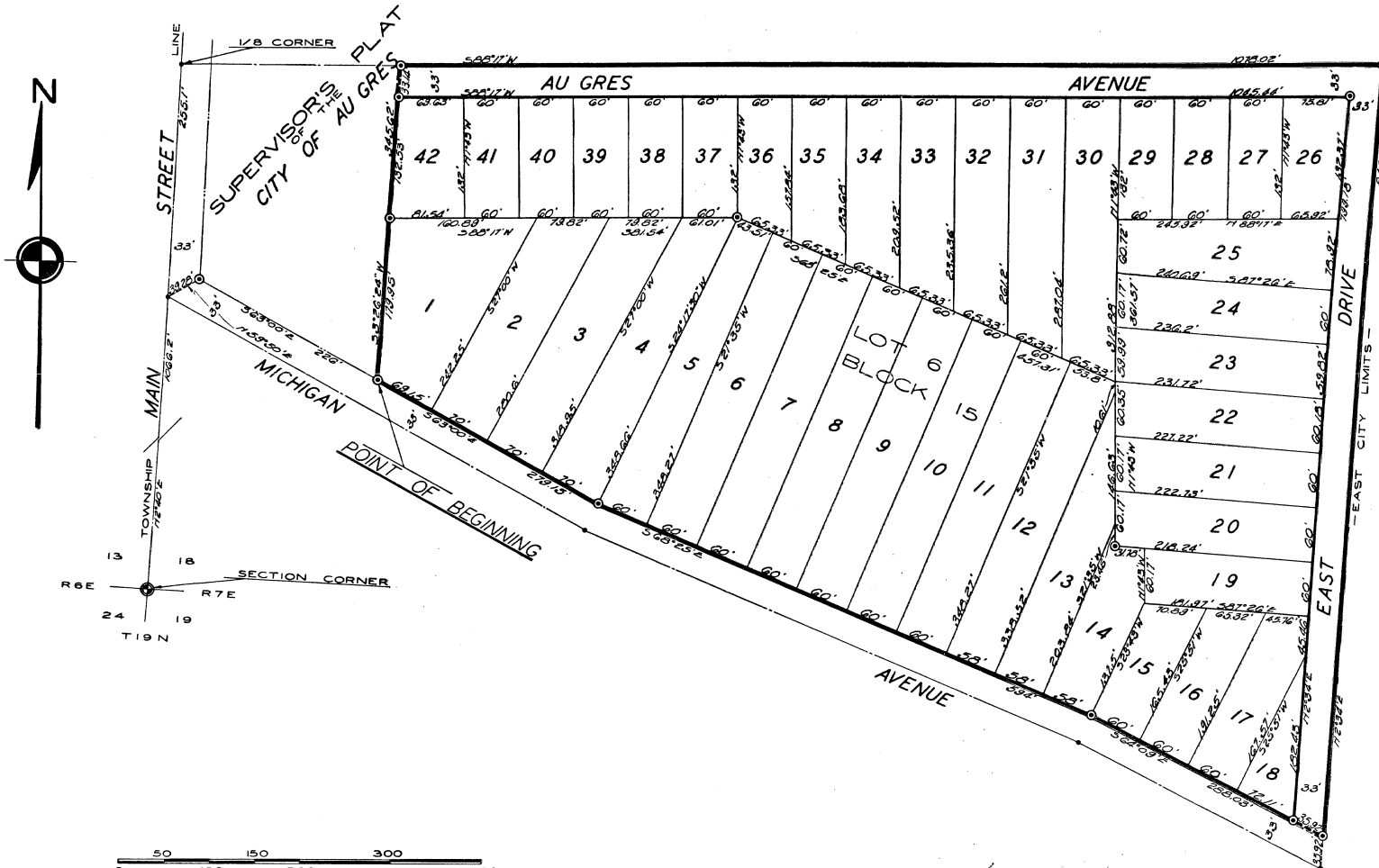


ROCKWEILER'S ADDITION

TO THE
CITY OF AU GRES

A SUBDIVISION OF PART OF SW 1/4 OF SW 1/4 OF SECTION 18 T19N R7E
SIMS TOWNSHIP ARENAC COUNTY, MICHIGAN.



SCALE — 1 INCH = 80 FEET

All dimensions are given in feet and decimals thereof.
All bearings are magnetic.

SURVEY and PLAT BY —
R. J. Cooke Registered Land Surveyor.
East Tawas, Michigan.