

# SIMS RANCH SHORES

A SUBDIVISION OF PART OF GOVERNMENT LOT 2 SECTION 17 T19N R7E  
SIMS TOWNSHIP ARENAC COUNTY, MICHIGAN.

### DEDICATION

KNOW ALL MEN BY THESE PRESENTS, That I Edwin W. Sims, Sims Ranch Trustee as provided and set forth by instrument recorded in the Arenac County Register of Deeds Office in Liber 70 of Deeds Page 539, as proprietor have caused the land embraced in the annexed plat to be surveyed, laid out and platted, to be known as SIMS RANCH SHORES a subdivision of part of Government Lot 2 section 17 T19N R7E Sims Township Arenac County, Michigan and that the same as shown on said plat is private to the use of the property owners in said Government Lot 2.

Signed and Sealed in Presence of

Sims Ranch Trustee

*E. F. Brand*  
E. F. Brand

By *Edwin W. Sims* (L.S.)  
Edwin W. Sims

*Juanita Lohr*  
Juanita Lohr

STATE OF MICHIGAN ss.  
County of Arenac

On this 4th day of June 1945 before me, a Notary Public in and for said county, personally came the above named Edwin W. Sims, Sims Ranch Trustee, known to me to be the person who executed the above dedication, and acknowledged the same to be his free act and deed.

*Theodore Reichle*  
Theo. E. Reichle

Notary Public Arenac County, Michigan.

My Commission expires Feb 7-1949

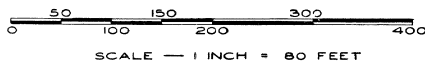
### CERTIFICATE OF MUNICIPAL APPROVAL

This plat was approved by the Township Board of the Township of Sims at a meeting held June 4th, 1945.

*Jacob Dittenber* Township Clerk  
Jacob Dittenber Township Clerk.

All dimensions are given in feet and decimals thereof.

All bearings are magnetic.



### DESCRIPTION OF LAND PLATTED

The land embraced in the annexed plat of SIMS RANCH SHORES a subdivision of part of Government Lot 2 section 17 T19N R7E Sims Township Arenac County, Michigan is described as follows: From the section corner common to sections 8, 9, 16 and 17 T19N R7E Sims Township Arenac County, Michigan thence S 3°45' W 1201.86 feet, thence S 78°15' 54" W 765 feet, thence S 69°57' 06" W 635.4 feet to Point of Beginning. Thence S 65°35' 06" W 607.34 feet, thence S 68°56' 36" W 500 feet, thence S 89°04' 43" W 390.22 feet, thence E 2°11' 12" E 125.44 feet, thence N 58°06' 54" E 617.12 feet, thence N 69°40' 30" E 225.07 feet, thence N 66°19' 30" E 295.07 feet, thence N 61°20' 30" E 413.51 feet, thence S 3°45' W 221.12 feet to Point of Beginning.

### COUNTY TREASURER'S CERTIFICATE RELATING TO TAXES

Office of County Treasurer, Arenac County.  
I hereby certify, That there are no tax liens or titles held by the State on the lands described hereon, and that there are no tax liens or titles held by individuals on said lands, for the five years preceding the 4th day of June 1945 and that the taxes for said period of five years are paid, as shown by the records of this office. This certificate does not apply to taxes, if any, now in process of collection by Township collecting officers.

*Claude E. Upton*  
Claude E. Upton County Treasurer.

### CERTIFICATE OF APPROVAL BY COUNTY BOARD

This plat was approved on the 6th day of June 1945.

*Avis Black*  
Avis Black Register of Deeds.

*Asa Whiting*  
Asa Whiting County Clerk.

*Claude E. Upton*  
Claude E. Upton County Treasurer.

### CERTIFICATE OF APPROVAL BY BOARD OF COUNTY ROAD COMMISSIONERS

This plat has been examined and was approved on the 4th day of June 1945 by the Arenac County Board of Road Commissioners.

*Earl H. Foster*  
Earl H. Foster Chairman.

*James Daniels*  
James Daniels Member.

*C. B. Most*  
C. B. Most Member.

### SURVEYOR'S CERTIFICATE

I hereby certify that the plat hereon delineated is a correct one and that permanent metal monuments consisting of bars not less than one-half inch in diameter and 48 inches in length encased in a concrete cylinder at least 4 inches in diameter and 48 inches in depth have been placed at points marked thus  $\odot$  as thereon shown at all angles in the boundaries of the land platted, and at the intersections of Lane with the boundaries of the plat as shown on said plat.

*R. J. Cooke*  
R. J. Cooke Registered Land Surveyor.  
East Tawas, Michigan.

### COPY

Register's Office  
Arenac County, ss.

Plat of Sims Ranch Shores  
Arenac Township

was Recorded this 14 day of

June A.D., 1945 at 11:15 o'clock

A. M. in Liber 2 Plate 2  
of a set of 10 Plans  
*Avis Black*  
ORIGINAL ON FILE

I HEREBY CERTIFY THAT THIS COPY IS A TRUE COPY OF THE MAP OR PLAT FORWARDED TO THE REGISTER OF DEEDS FOR RECORD.

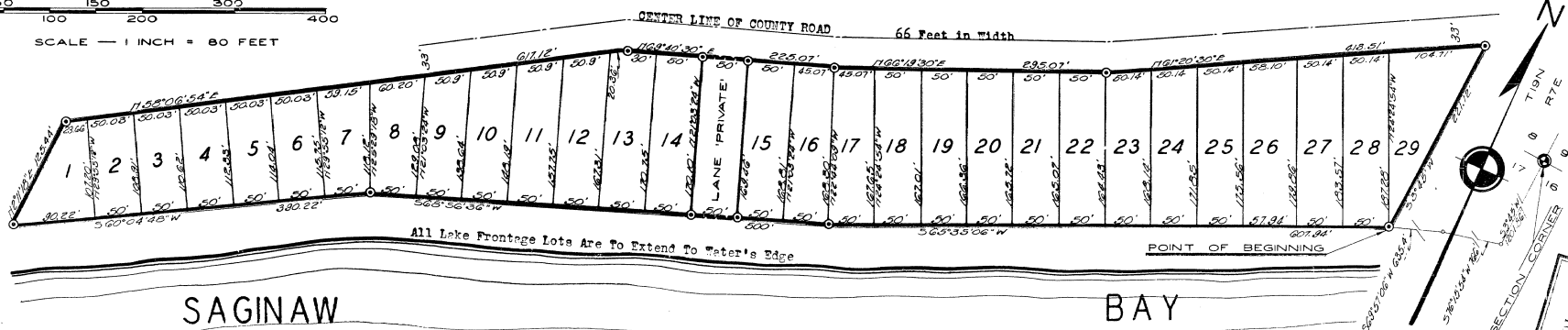
COMPARED June 11, 1945  
*Mayme Jewell Purdy*  
DEPUTY AUDITOR GENERAL  
Mayme Jewell Purdy

Examined and Approved

June 11, 1945  
*Mayme Jewell Purdy*  
DEPUTY AUDITOR GENERAL  
Mayme Jewell Purdy

FILED IN AUDITOR GENERAL'S DEPT.

June 18, 1945  
*Mayme Jewell Purdy*  
DEPUTY AUDITOR GENERAL  
Mayme Jewell Purdy



01165