

MORGAN'S WEST AU GRES ACRES

A SUBDIVISION OF PART OF N1/2 OF NE1/4 OF SE1/4 OF SECTION 14 T19N R6E
AU GRES TOWNSHIP ARENAC COUNTY, MICHIGAN.

DEDICATION

KNOW ALL MEN BY THESE PRESENTS, That we Norman Morgan as proprietor, and Helen Morgan his wife, have caused the land embraced in the annexed plat to be surveyed, laid out and platted, to be known as Morgan's WEST AU GRES ACRES a subdivision of part of N1/2 of NE1/4 of SE1/4 of section 14 T19N R6E Au Gres Township Arenac County, Michigan.

Signed and Sealed in Presence of

R. J. Cooke
R. J. Cooke
Eleanor I. Cooke
Eleanor I. Cooke
Norman Morgan (L.S.)
Norman Morgan
Helen Morgan (L.S.)
Helen Morgan

STATE OF MICHIGAN,
County of Iosco ss.

On this Twenty-Second day of July 1946 before me, a Notary Public in and for said county, personally came the above named Norman Morgan and Helen Morgan his wife, known to me to be the persons who executed the above dedication, and acknowledged the same to be their free act and deed.

R. J. Cooke
R. J. Cooke
Notary Public Iosco County, Michigan.

My Commission expires July 12, 1947.

CERTIFICATE OF APPROVAL BY COUNTY BOARD

This plat was approved on the 25th day of September, 1946

Wm. Black
Avis Black Register of Deeds.
Asa Whiting
Asa Whiting County Clerk.
Claude E. Upton
Claude E. Upton County Treasurer.

FILED IN ADDITION GENERAL'S DEPT.

Maxwell Murdy
Maxwell Murdy
Examiner and Approved

SURVEYOR'S CERTIFICATE

I hereby certify that the plat hereon delineated is a correct one and that permanent metal monuments consisting of bars not less than one-half inch in diameter and 48 inches in length encased in a concrete cylinder at least 4 inches in diameter and 48 inches in depth have been placed at points marked thus \odot as thereon shown at all angles in the boundaries of the land platted, as shown on said plat.

R. J. Cooke
R. J. Cooke Registered Land Surveyor.
East Tawas, Michigan.

CERTIFICATE OF MUNICIPAL APPROVAL

This plat was approved by the Township Board of the Township of Au Gres at a meeting held July 22 1946.

Hilda A. Dreyer
Hilda A. Dreyer Township Clerk.

CERTIFICATE OF APPROVAL BY BOARD OF COUNTY ROAD COMMISSIONERS

This plat has been examined and was approved on the 14th day of September 1946 by the Arenac County Board of Road Commissioners.

Earl H. Foster
Earl H. Foster Chairman.
James Daniels
James Daniels Member.
J. B. Kort
J. B. Kort Member.

DESCRIPTION OF LAND PLATTED

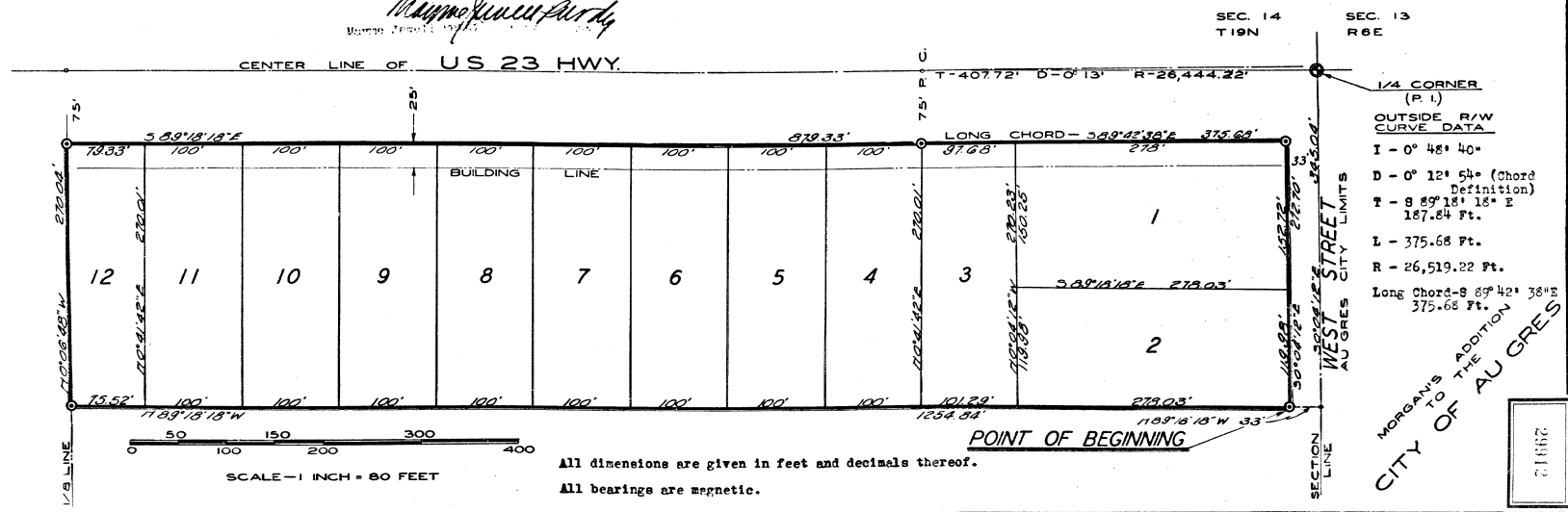
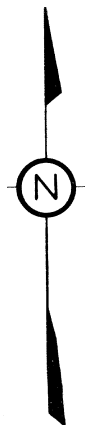
The land embraced in the annexed plat of Morgan's WEST AU GRES ACRES a subdivision of part of N1/2 of NE1/4 of SE1/4 of section 14 T19N R6E Au Gres Township Arenac County, Michigan is described as follows: From the E corner common to sections 13 and 14 T19N R6E Au Gres Township Arenac County, Michigan thence S 0° 04' 12" E 345.04 feet, thence N 89° 18' 18" W 33 feet to Point of Beginning. Thence N 89° 18' 18" W 1254.24 feet, thence N 0° 06' 48" W 270.04 feet, thence S 89° 18' 18" E 272.73 feet, thence along arc of Degree of Curve of 12° 54' (Chord Definition) with long Chord S 89° 42' 38" E 375.68 feet, thence S 0° 04' 12" E 272.70 feet to Point of Beginning.

COUNTY TREASURER'S CERTIFICATE RELATING TO TAXES

Office of County Treasurer, Arenac County. I hereby certify, That there are no tax liens or titles held by the State on the lands described hereon, and that there are no tax liens or titles held by individuals on said lands, for the five years preceding the 22nd day of July 1946 and that the taxes for said period of five years are paid, as shown by the records of this office. This certificate does not apply to taxes, if any, now in process of collection by Township collecting officers.

Claude E. Upton
Claude E. Upton County Treasurer.

APPROVED
Charles M. Dreyer
CHARLES M. DREYER
STATE HIGHWAY COMMISSIONER



All dimensions are given in feet and decimals thereof.
All bearings are magnetic.

21612