

# SUPERVISOR'S PLAT OF FIRST ADDITION TO

# BROWN'S PINE WOOD PARK

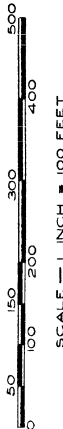
A SUBDIVISION OF PART OF GOVERNMENT LOT 1 SECTION 1 T 20N R7E  
WHITNEY TOWNSHIP ARENAC COUNTY, MICHIGAN.

1/4 CORNER  
SECTION LINE  
1/820'  
SEC. T20N  
R7E

1/8 CORNER

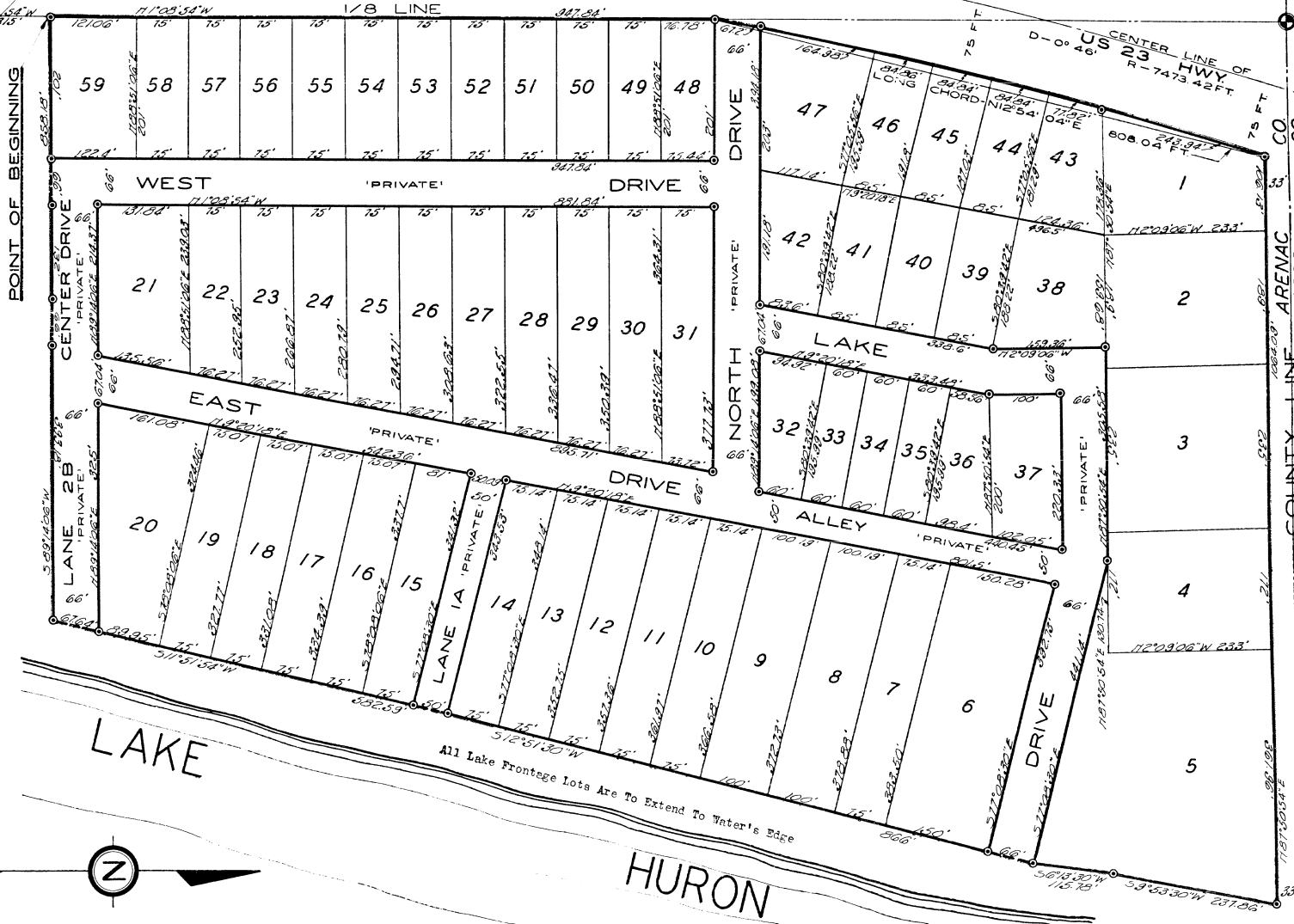
BROWN'S  
(PINE WOOD PARK)  
—A RECORDED PLAT—

POINT OF BEGINNING



SCALE — 1 INCH = 100 FEET

All dimensions are given in feet and decimals thereof,  
all bearings are magnetic.



NW CORNER  
GOV LOT 1  
SEC. 1 T20N R7E

INSIDE RIGHT OF WAY CURVE DATA

- I - 6' 15" 40'
- D - 0' 46' 28" (Chord Definition)
- R - 73' 98.42 Ft.
- T - N 1° 08' 51" W 401.62 Ft.
- L - 808.45 Ft.
- Long Chord - N 12° 51' 04" E 808.04 Ft.

SURVEY and PLAT BY *R. J. Cooke*  
R. J. Cooke  
Registered Land Surveyor  
East Tawas, Michigan.



HURON