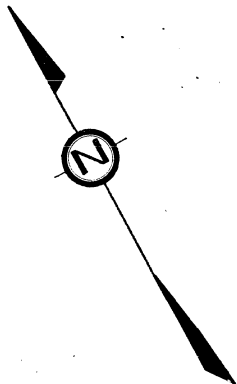


# SCHOON'S ADDITION TO THE CITY OF AU GRES

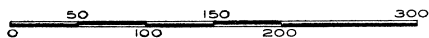
A SUBDIVISION OF PART OF GOVERNMENT LOTS 5 & 6 OF SECTION 13 T19N R6E  
AU GRES TOWNSHIP ARENAC COUNTY, MICHIGAN.

MICHIGAN AVENUE POINT OF BEGINNING



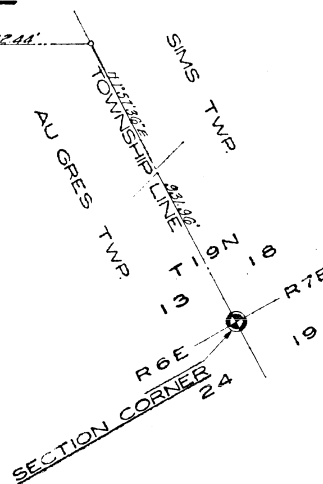
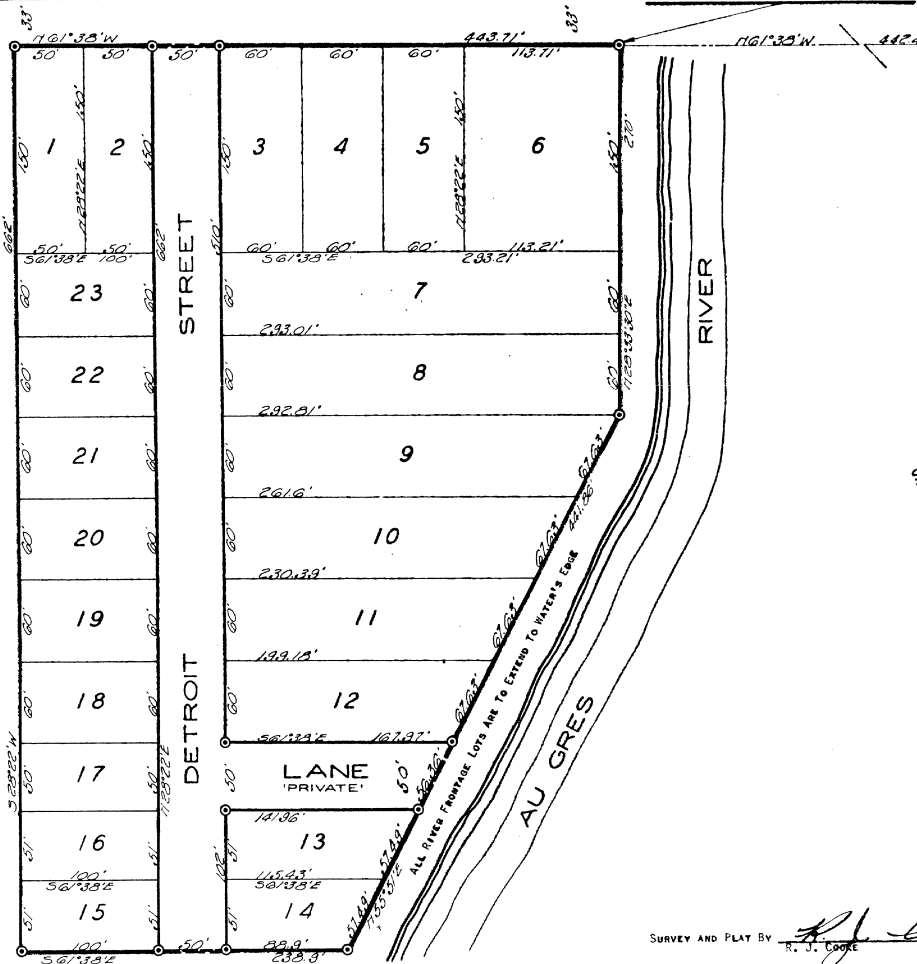
SUPERVISOR'S PLAT  
OF THE  
CITY OF AU GRES  
- A RECORDED PLAT -

LOT 17  
& PART OF LOT 16  
OF BLOCK 12



SCALE — 1 INCH = 60 FEET

ALL DIMENSIONS ARE GIVEN IN FEET AND DECIMALS THEREOF.  
ALL BEARINGS ARE MAGNETIC.



SURVEY AND PLAT BY

*R. J. Cooke*  
R. J. COOKE

REGISTERED LAND SURVEYOR  
EAST TAWAS, MICHIGAN.