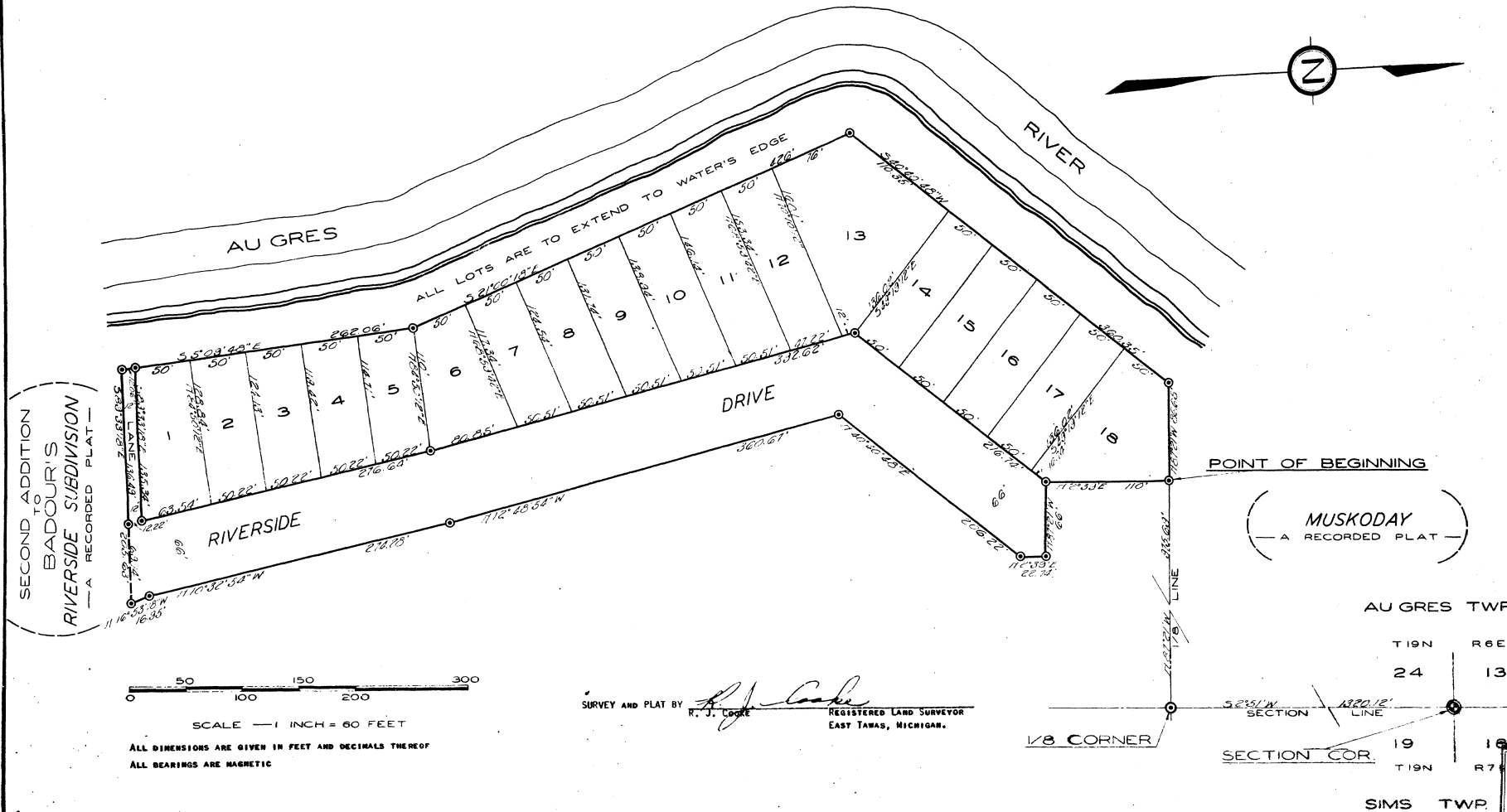


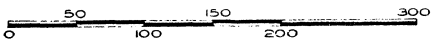
THIRD ADDITION
 TO
 BADOUR'S
RIVERSIDE SUBDIVISION

A SUBDIVISION OF PART OF GOVERNMENT LOT 2 OF SECTION 24 T19N R6E
 AU GRES TOWNSHIP ARENAC COUNTY, MICHIGAN.



SECOND ADDITION
 TO
 BADOUR'S
 RIVERSIDE SUBDIVISION
 — A RECORDED PLAT —

POINT OF BEGINNING
 (MUSKODAY)
 — A RECORDED PLAT —



SCALE — 1 INCH = 60 FEET
 ALL DIMENSIONS ARE GIVEN IN FEET AND DECIMALS THEREOF
 ALL BEARINGS ARE MAGNETIC

SURVEY AND PLAT BY *R. J. COOKE*
 R. J. COOKE REGISTERED LAND SURVEYOR
 EAST TAWAS, MICHIGAN.

AU GRES TWP
 T19N R6E
 24 13
 SECTION COR.
 T19N R7E
 SIMS TWP