

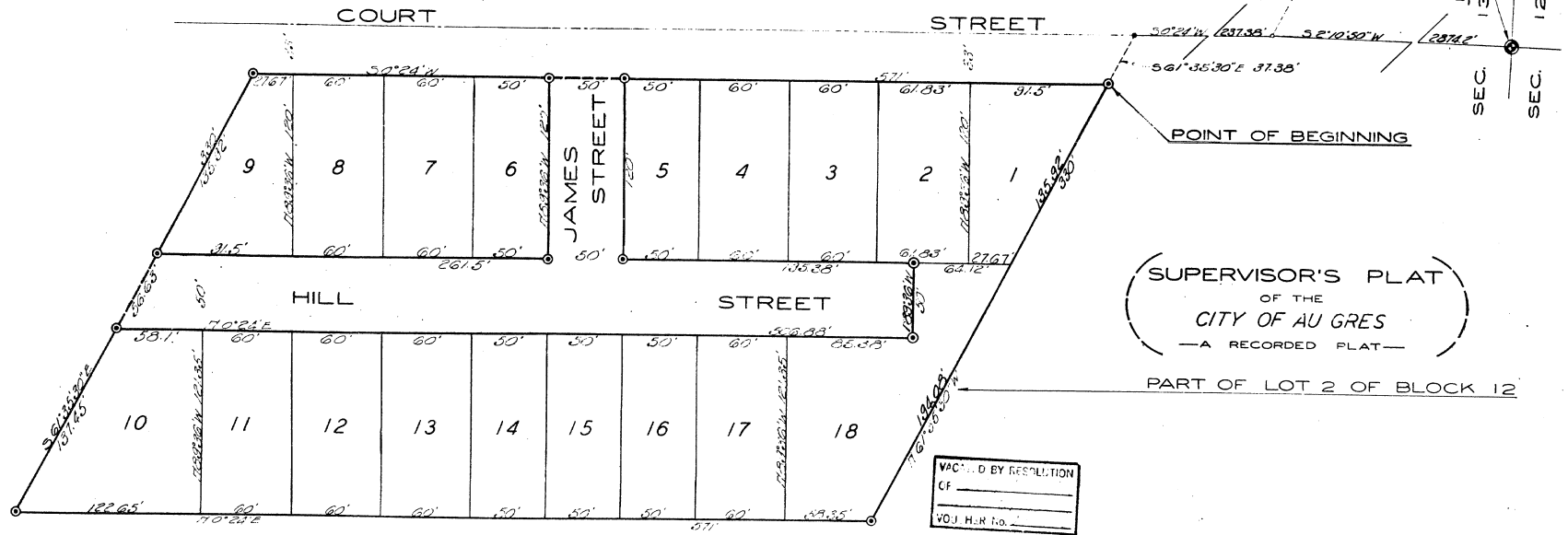
PETTY'S ADDITION

TO THE

CITY OF AU GRES

A SUBDIVISION OF PART OF GOVERNMENT LOT 5 OF SECTION 13 T19N R6E
AU GRES TOWNSHIP ARENAC COUNTY, MICHIGAN.

(WILK'S ADDITION)
—A RECORDED PLAT—



(SUPERVISOR'S PLAT
OF THE
CITY OF AU GRES
—A RECORDED PLAT—

VACATED BY RESOLUTION
OF _____
VOJ. H.R. No. _____



SCALE — 1 INCH = 50 FEET

ALL DIMENSIONS ARE GIVEN IN FEET AND DECIMALS THEREOF.
ALL BEARINGS ARE MAGNETIC.

SURVEY AND PLAT BY R. J. COFFE
REGISTERED LAND SURVEYOR
EAST TAWAS, MICHIGAN.



1303