

"AL HEPPNER'S BEACH SUBDIVISION"

A PART OF GOVERNMENT LOT 2 AND LOT 3 IN SE 1/4 OF FRACTIONAL SECTION 31 T.18N. R.5E. STANDISH TOWNSHIP, ARENAC COUNTY, MICHIGAN

Scale 1" = 100'
All dimensions are in feet and decimals thereof

APPROVAL BY COUNTY PLAT BOARD

This plat was approved on the 27th day of January, 1953 by the Ardenas County Plat Board

Arnie Black (County Register of Deeds)
Douglas Black (County Clerk)
Claude E. Hapton (County Treasurer)
Jackie M. Caraty (County Deed Commissioner)

APPROVAL BY BOARD OF COUNTY ROAD COMMISSIONERS

This plat has been examined and was approved on the 5th day of January, 1953 by the Ardenas County Board of Road Commissioners

E. H. Foster (Chairman)
E. H. Foster (Member)
John C. Adams (Member)

APPROVAL BY BOARD OF COUNTY AUDITORS

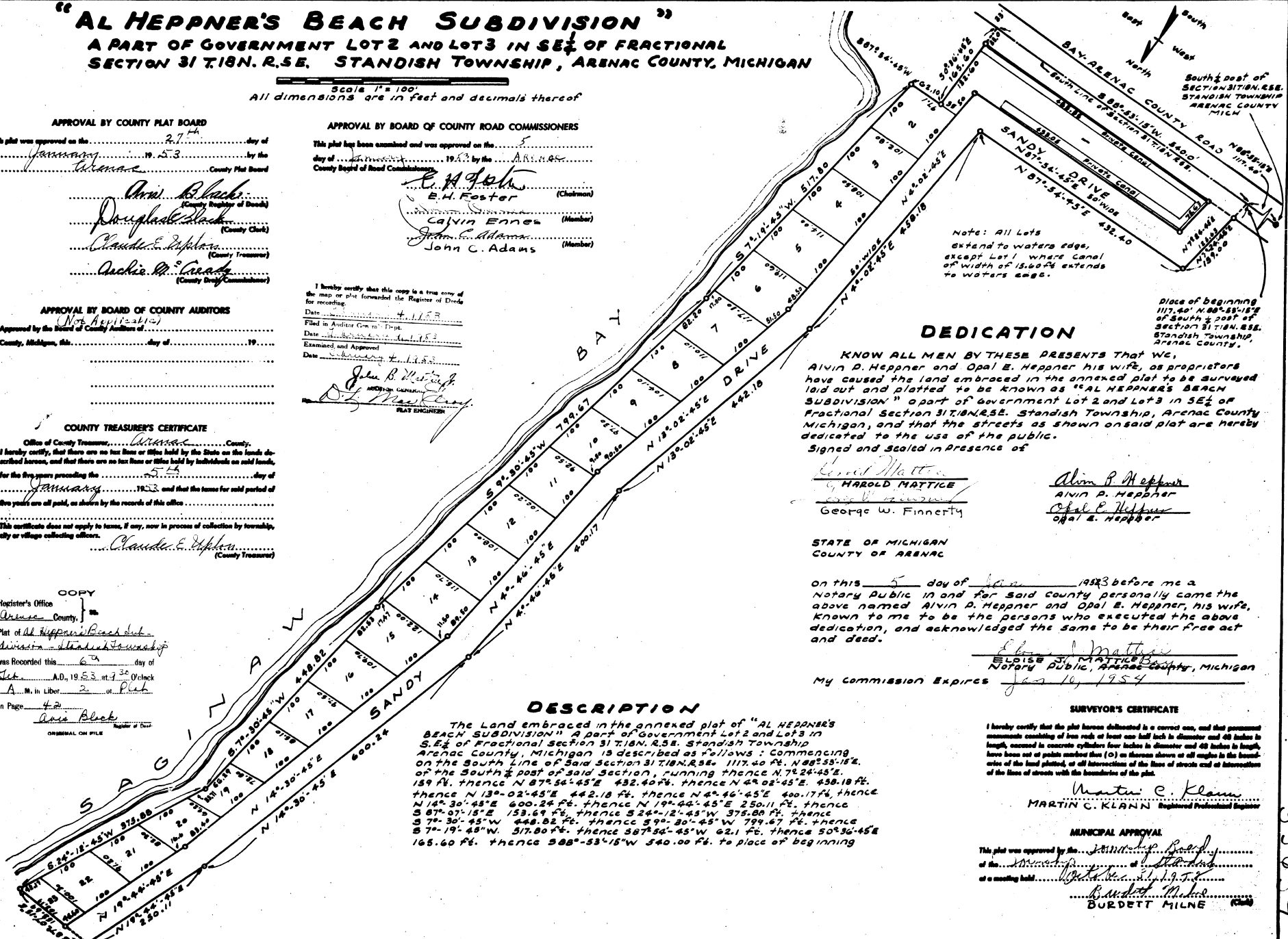
Approved by the Board of County Auditors of Ardenas County, Michigan, this 5th day of January, 1953

I hereby certify that this copy is a true copy of the map or plat forwarded the Register of Deeds for recording.
Date 4/11/53
Filed in Auditor General's Office Ardenas
Date 4/11/53
Examined and Approved
Date 4/11/53
John B. Westcott
PLAT ENGINEER

COUNTY TREASURER'S CERTIFICATE

Office of County Treasurer, Ardenas County.
I hereby certify that there are no tax liens or titles held by the State on the lands described herein, and that there are no tax liens or titles held by individuals on said lands, for the five years preceding the 27th day of January, 1953 and that the taxes for said period of five years are all paid, as shown by the records of this office.
This certificate does not apply to taxes, if any, now in process of collection by township, city or village collecting officers.
Claude E. Hapton (County Treasurer)

COPY
Register's Office
Ardenas County
Plat of Al Heppner's Beach Sub Division, Standish Township was Recorded this 6th day of Feb, A.D., 1953, at 9:30 O'clock A.M. in Liber 2 of Plat in Page 42
Arnie Black Register of Deeds
ORIGINAL ON FILE



DEDICATION

KNOW ALL MEN BY THESE PRESENTS THAT WE, Alvin P. Heppner and Opal E. Heppner his wife, as proprietors have caused the land embraced in the annexed plat to be surveyed laid out and platted to be known as "AL HEPPNER'S BEACH SUBDIVISION" a part of Government Lot 2 and Lot 3 in SE 1/4 of Fractional Section 31 T.18N.R.5E. Standish Township, Arenac County Michigan, and that the streets as shown on said plat are hereby dedicated to the use of the public.
Signed and Sealed in Presence of

Harold Mattice
HAROLD MATTICE
George W. Finnerty

Alvin P. Heppner
Alvin P. Heppner
Opal E. Heppner
Opal E. Heppner

STATE OF MICHIGAN
COUNTY OF ARENAC

On this 5th day of Jan, 1953 before me a Notary Public in and for said County personally came the above named Alvin P. Heppner and Opal E. Heppner, his wife, known to me to be the persons who executed the above dedication, and acknowledged the same to be their free act and deed.

Elaine Mattice
ELAINE MATTICE
Notary Public, Arenac County, Michigan
My Commission Expires Jan 16, 1954

DESCRIPTION

The Land embraced in the annexed plat of "AL HEPPNER'S BEACH SUBDIVISION" a part of Government Lot 2 and Lot 3 in SE 1/4 of Fractional Section 31 T.18N. R.5E. Standish Township, Arenac County, Michigan is described as follows: Commencing on the South Line of said Section 31 T.18N. R.5E. 1117.40 ft. N 88° 55' 15" E. of the South 1/2 post of said Section, running thence N 7° 24' 45" E. 159 ft. thence N 87° 34' 45" E. 432.40 ft. thence N 42° 02' 45" E. 450.18 ft. thence N 13° 02' 45" E. 442.18 ft. thence N 4° 46' 45" E. 400.17 ft. thence N 14° 30' 45" E. 600.24 ft. thence N 19° 44' 45" E. 250.11 ft. thence S 87° 07' 15" E. 153.64 ft. thence S 24° 12' 45" W. 375.88 ft. thence S 7° 30' 45" W. 448.82 ft. thence S 7° 30' 45" W. 375.88 ft. thence S 7° 19' 45" W. 375.88 ft. thence S 87° 34' 45" W. 621 ft. thence S 0° 30' 45" E. 165.60 ft. thence S 88° 53' 15" W. 540.00 ft. to place of beginning

SURVEYOR'S CERTIFICATE

I hereby certify that the plat hereto delineated is a correct one, and that permanent monuments consisting of iron rods at least one inch in diameter and 48 inches in length, secured in concrete cylinders four inches in diameter and 48 inches in length, have been set at points marked (a) on the plan shown on all corners in the boundaries of the land platted, at all intersections of the lines of streets and at intersections of the lines of streets with the boundaries of the plat.

Martin C. Klann
MARTIN C. KLANN Registered Professional Engineer

MUNICIPAL APPROVAL

This plat was approved by the Standish Board of the Standish Township of Ardenas County, Michigan, at a meeting held Jan 10, 1953
Burdett Milne
BURDETT MILNE (Clk)

93634