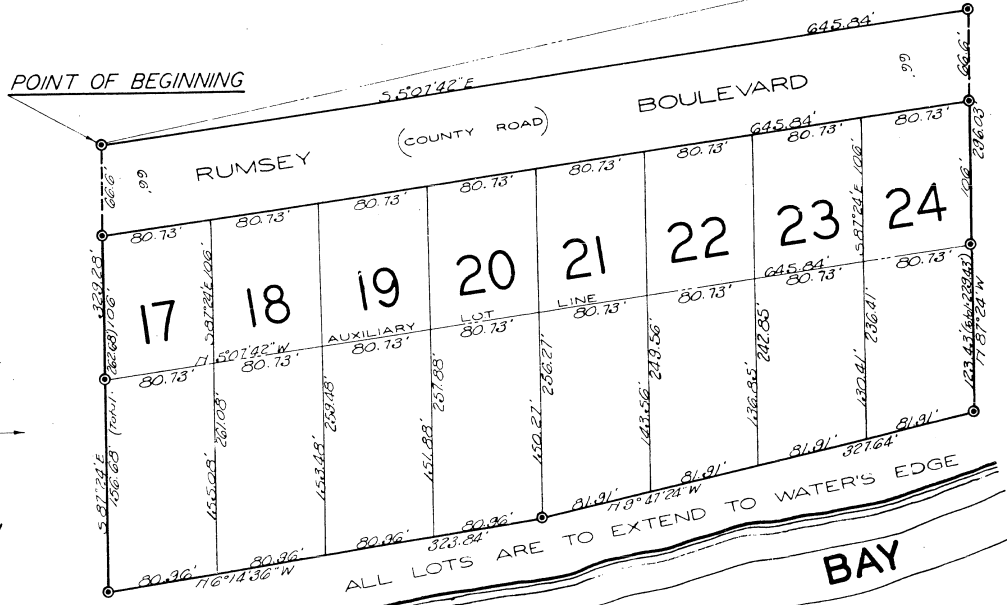
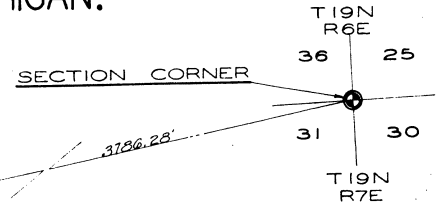


# FIRST ADDITION TO OAK RIDGE

A SUBDIVISION OF PART OF GOVERNMENT LOT 2 OF SECTION 31 T19N R7E  
AU GRES TOWNSHIP ARENAC COUNTY, MICHIGAN.



OAK RIDGE  
— A RECORDED PLAT —



SCALE — 1 INCH = 60 FEET

ALL DIMENSIONS ARE IN FEET AND DECIMALS THEREOF  
ALL RIGHTS RESERVED

DRAWN AND PLATTED BY [Signature]  
REGISTERED LAND SURVEYOR  
EAST TAWES, MICHIGAN.

35-117