

# SAGINAW BAY SHORES

A SUBDIVISION OF PART OF GOVERNMENT LOT 3 OF SECTION 6 T18N R7E

## AU GRES TOWNSHIP ARENAC COUNTY, MICHIGAN.

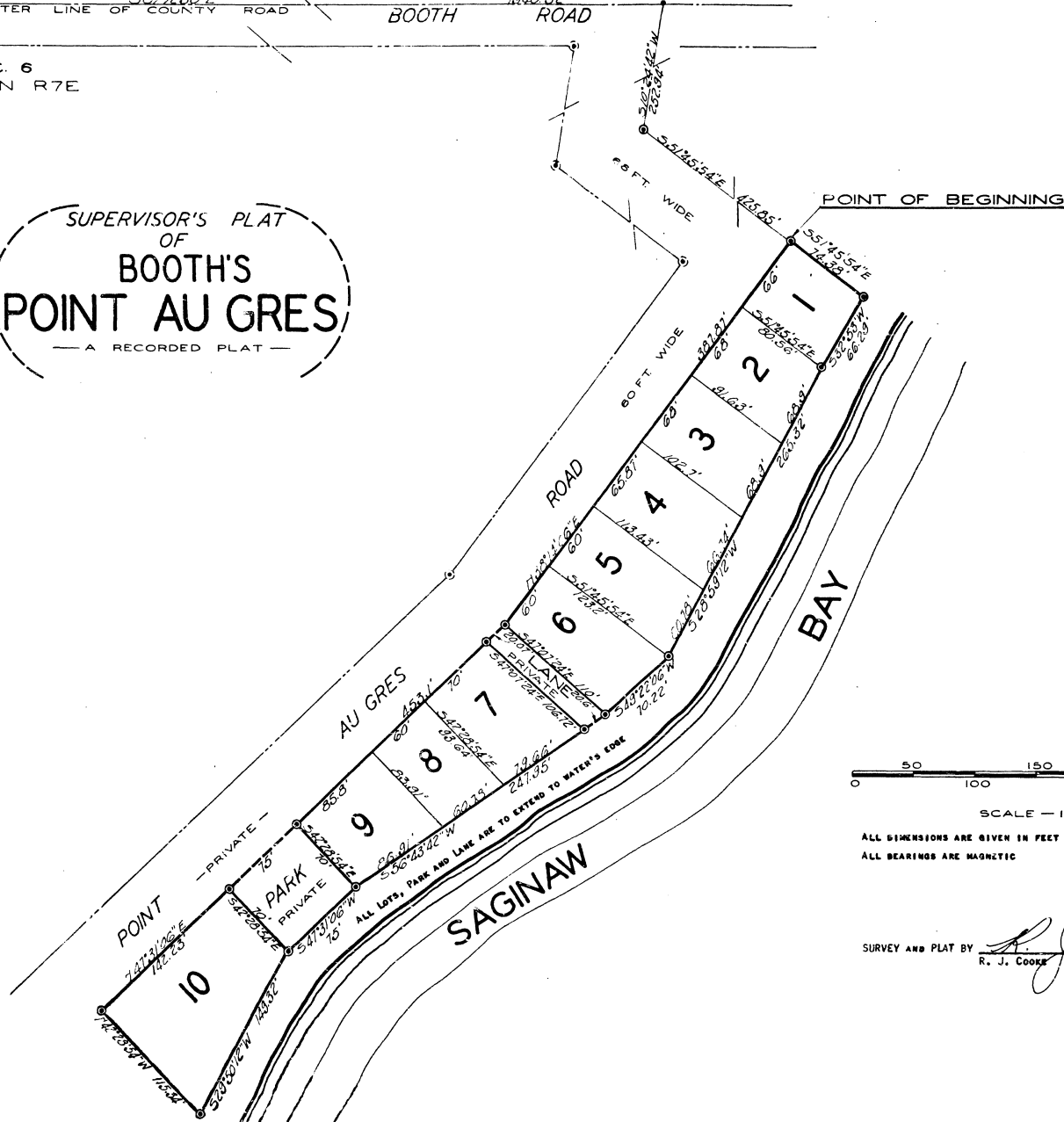
1/4 CORNER

SEC. 1  
T18N R6E

SEC. 6  
T18N R7E

CENTER LINE OF COUNTY ROAD BOOTH ROAD 1940.32'

SUPERVISOR'S PLAT  
OF  
**BOOTH'S  
POINT AU GRES**  
— A RECORDED PLAT —



SCALE — 1 INCH = 60 FEET

ALL DIMENSIONS ARE GIVEN IN FEET AND DECIMALS THEREOF  
ALL BEARINGS ARE MAGNETIC

SURVEY AND PLAT BY

*R. J. Cooke*  
R. J. COOKE  
REGISTERED LAND SURVEYOR  
210 NORTH ADAMS STREET  
EAST TAWAS, MICHIGAN.