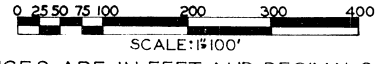


"LAFAVE SUBDIVISION NO. 3"

42541

PART OF GOVERNMENT LOT 2, SECTION 29, T. 18 N., R. 5 E., STANDISH TWP., ARENAC CO., MICHIGAN



ALL DISTANCES ARE IN FEET AND DECIMALS THEREOF
 ALL WATERFRONT LOTS EXTEND TO THE WATERS EDGE
 A ARTHUR H. LEACH, P.E., BRIDGEPORT, MICH.
 1959

DESCRIPTION

The land embraced in the annexed plat of "LA FAVE SUBDIVISION NO. 3", a subdivision of part of Government Lot 2, Section 29, T 18 N., R 5 E., Standish Township, Arenac County, Michigan is described as follows:
 Beginning at a point S 89° 21' E - 1595.75 feet from the center of Section 29, T 18 N., R 5 E., Standish Township, Arenac County, Michigan and running thence N 0° 30' E - 595.0 feet, thence S 89° 21' E - 10.95 feet, thence N 10° E - 60.95 feet, thence S 89° 21' E - 190.0 feet to a point "A" in the traverse line along the shore of Saginaw Bay, thence continuing S 89° 21' E - 50 feet more or less to waters edge, thence Easterly, Westerly and Southerly 850.0 feet more or less along the waters edge, thence N 89° 21' W - 55 feet more or less to a point "B" in the traverse line along the shore of Saginaw Bay, said point "B" being located S 52° 12' 07" W - 155.09 feet and S 0° 30' W - 540.0 feet from point "A", thence N 89° 21' W - 140.0 feet to the Point of Beginning of this description. Outaining 9 lots numbered 39 thru 47 inclusive and a private park "A".

DEDICATION

KNOW ALL MEN BY THESE PRESENTS, that we George LaFave and Hortense LaFave, his wife, as proprietors, have caused the land embraced in the annexed plat to be surveyed, laid out and platted, to be known as "LA FAVE SUBDIVISION NO. 3", a subdivision of part of Government Lot 2, Section 29, T 18 N., R 5 E., Standish Township, Arenac County, Michigan and that the private park as indicated on said plat is hereby dedicated to the use of the lot owners only.

Signed and Sealed in the Presence of:

Roger L. Lichon Witness
George LaFave L.S.
Arthur H. Leach Witness
Hortense LaFave L.S.

COUNTY TREASURER'S CERTIFICATE

Office of County Treasurer, ARENAC County.
 I hereby certify, that there are no tax liens or titles held by the State on the lands described hereon, and that there are no tax liens or titles held by individuals on said lands, for the five years preceding the . . . day of . . . 1959, and that the taxes for said period of five years are all paid, as shown by the records of this office
 This certificate does not apply to taxes, if any, now in process of collection by township, city or village collecting officers.
Harry Mc Gready (County Treasurer)

APPROVAL BY BOARD OF COUNTY ROAD COMMISSIONERS

This plat has been examined and was approved on the . 12 . day of . . . 1959, by the Arenac County Board of Road Commissioners.
Thomas Logan Chairman
Ross Peprin Member
Charles Dittenber Member

MUNICIPAL APPROVAL

This plat was approved by the . . . Township Board of the . . . Township of . . . Standish at a meeting held
Burdett Milne (Clerk)

SURVEYOR'S CERTIFICATE

I hereby certify that the plat hereon delineated is a correct one, and that permanent monuments consisting of iron rods at least one half inch in diameter and 36 inches in length, encased in concrete cylinders four inches in diameter and 36 inches in length have been set at points marked thus (o) as thereon shown at all angles in the boundaries of the platted land, at all intersections of the lines of streets and at intersections of the lines of streets with the boundaries of the plat.
Arthur H. Leach No. 7236 Registered Professional Civil Engineer

I hereby certify this plat is a true copy of the original.
 December 8, 1959
 December 15, 1959
 December 8, 1959
D. L. Mac Elroy

ACKNOWLEDGMENT

STATE OF MICHIGAN
 County of Arenac

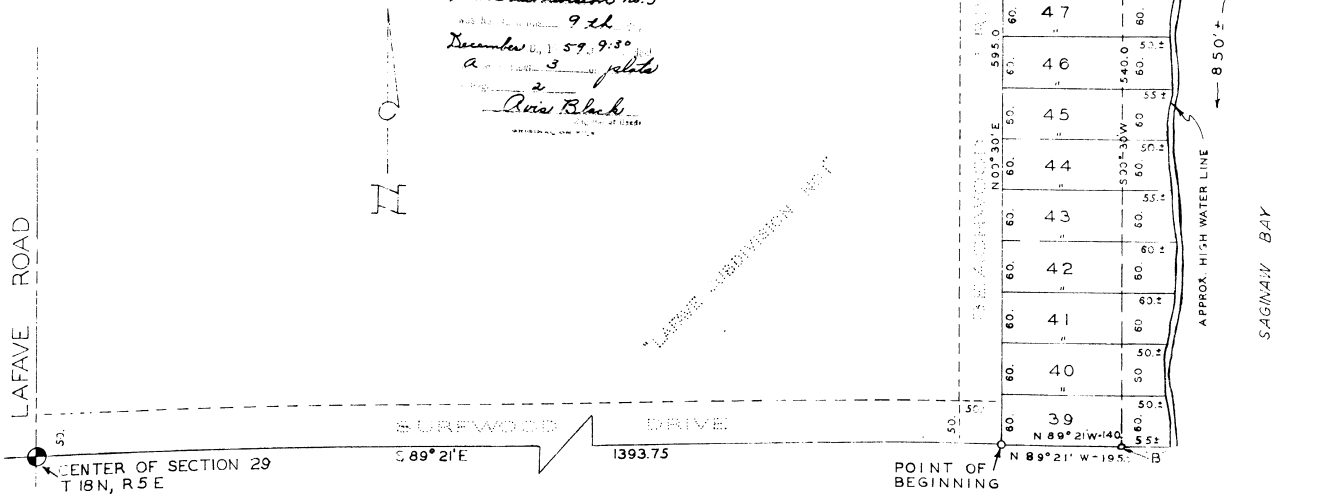
On this . 12 . day of . October . 1959, before me, a Notary Public in and for said County, personally came the above named George LaFave and Hortense LaFave, his wife, known to me to be the persons who executed the above dedication and acknowledged the same to be their free act and deed.

Notary Public
 Notary Public, Arenac County
 My Commission Expires . Feb. 23, 1963

APPROVAL BY COUNTY PLAT BOARD

This plat was approved on the . 12 . day of . December . 1959 by the Arenac County Plat Board.

Avis Black (County Register of Deeds)
Douglas G. Black (County Clerk)
Harry Mc Gready (County Treasurer)
Archie Mc Gready (County Drain Commissioner)



The approximate high water line is the 561.5 contour as determined by stadia. The present waters edge is 900 feet more or less East of said approximate high water line.