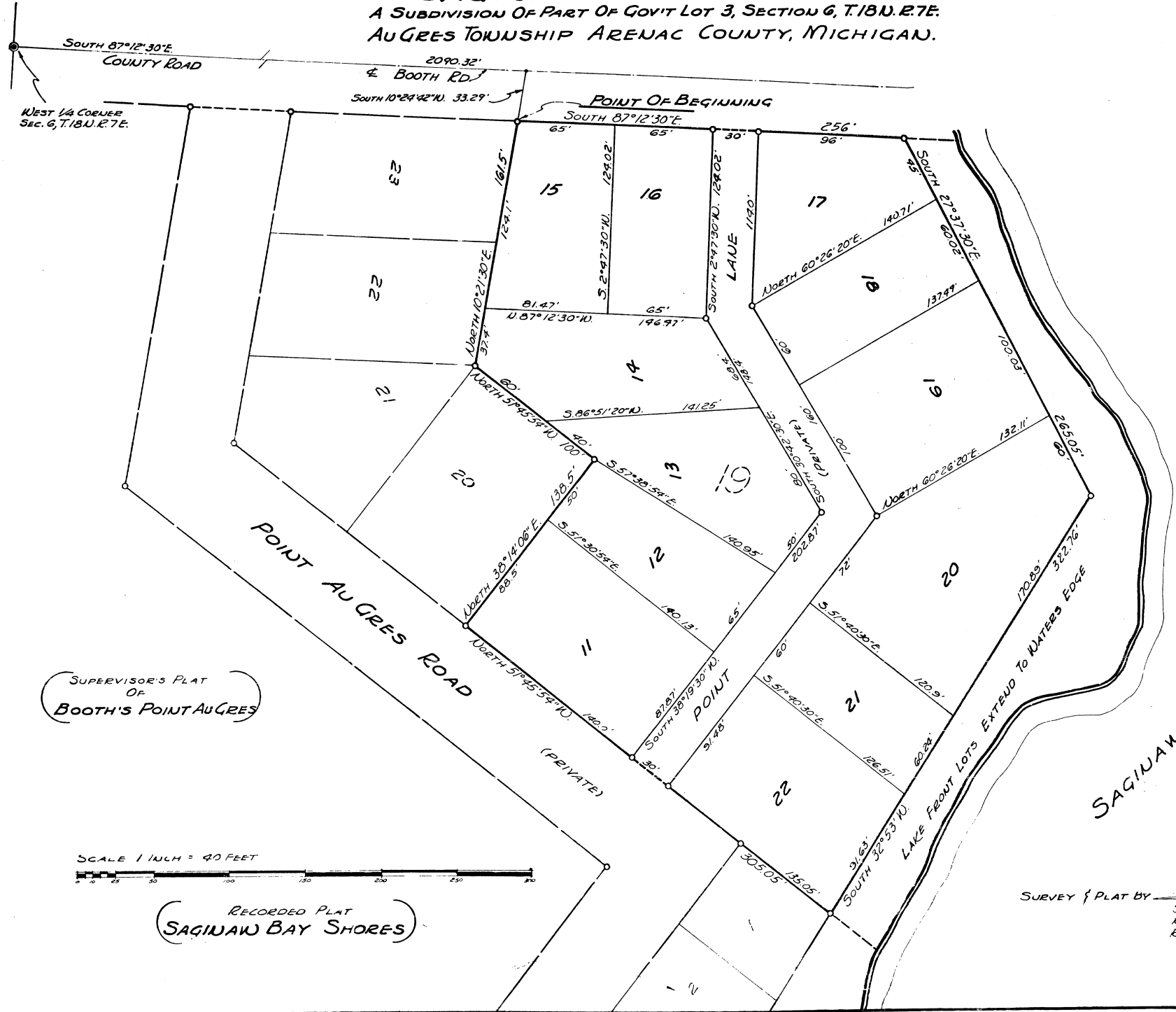


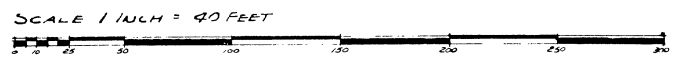
SAGINAW BAY SHORES No 2

A SUBDIVISION OF PART OF GOV'T LOT 3, SECTION 6, T.18N. R.7E.
AUGRES TOWNSHIP ARENAC COUNTY, MICHIGAN.



WEST 1/4 CORNER
Sec. 6, T.18N. R.7E.

SUPERVISOR'S PLAT
OF
BOOTH'S POINT AU GRES



RECORDED PLAT
SAGINAW BAY SHORES

SURVEY & PLAT BY
S.A. TOKOLY
REG. LAND SURVEY
REG. CIVIL ENGINEER