

# "FOREST LAKE NO.2"

PART OF THE N 1/2 OF SEC 24 AND PART OF THE NE 1/4 OF THE NE 1/4 OF SEC 23, T20N, R3E, MOFFATT TOWNSHIP, ARENAC COUNTY, MICHIGAN

All dimensions are in feet & decimals thereof.

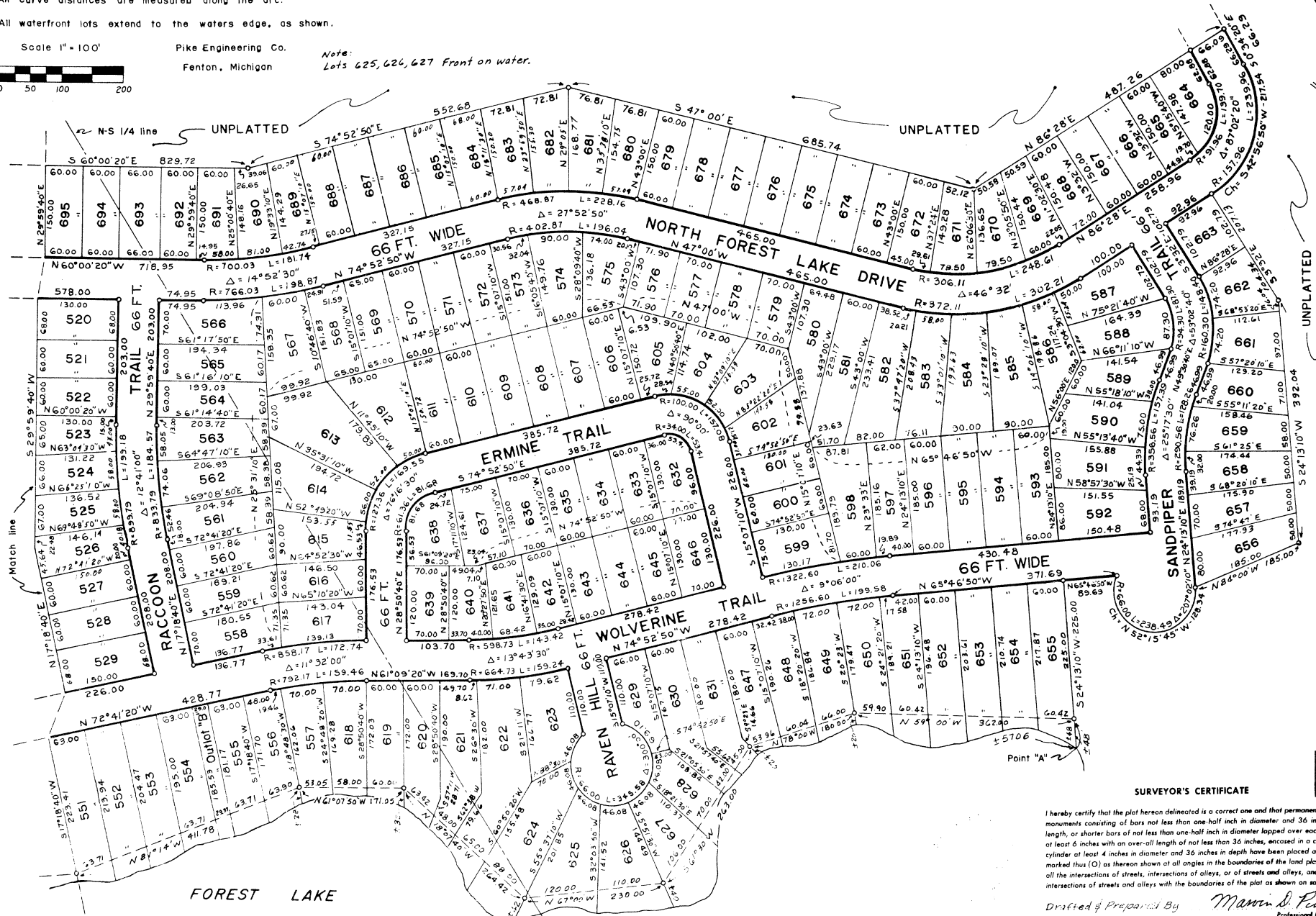
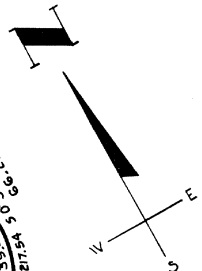
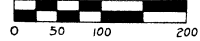
All curve distances are measured along the arc.

All waterfront lots extend to the waters edge, as shown.

Scale 1"=100'

Pike Engineering Co.  
Fenton, Michigan

Note:  
Lots 625, 626, 627 Front on water.



**SURVEYOR'S CERTIFICATE**

I hereby certify that the plat hereon delineated is a correct one and that permanent metal monuments consisting of bars not less than one-half inch in diameter and 36 inches in length, or shorter bars of not less than one-half inch in diameter lapped over each other at least 6 inches with an over-all length of not less than 36 inches, are placed at points marked thus (O) as thereon shown at all angles in the boundaries of the land platted, at all the intersections of streets, intersections of alleys, or of streets and alleys, and at the intersections of streets and alleys with the boundaries of the plat as shown on said plat.

Drawn & Prepared By *Marvin D. Pike*  
Professional Engineer  
Marvin D. Pike No. 11166  
405 South Leroy Street  
Fenton, Michigan 48430

50214