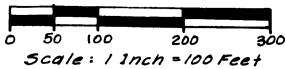


# "FOREST LAKE HEIGHTS NO. 2"

PART OF THE S 1/2 OF SEC 14 AND PART OF THE E 1/2 OF THE SE 1/4 OF SEC 15, T20N, R3E, MOFFATT TOWNSHIP, ARENAC COUNTY, MICHIGAN.



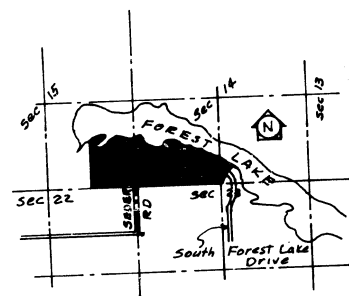
SURVEYOR'S CERTIFICATE

Sheet 1 of 4

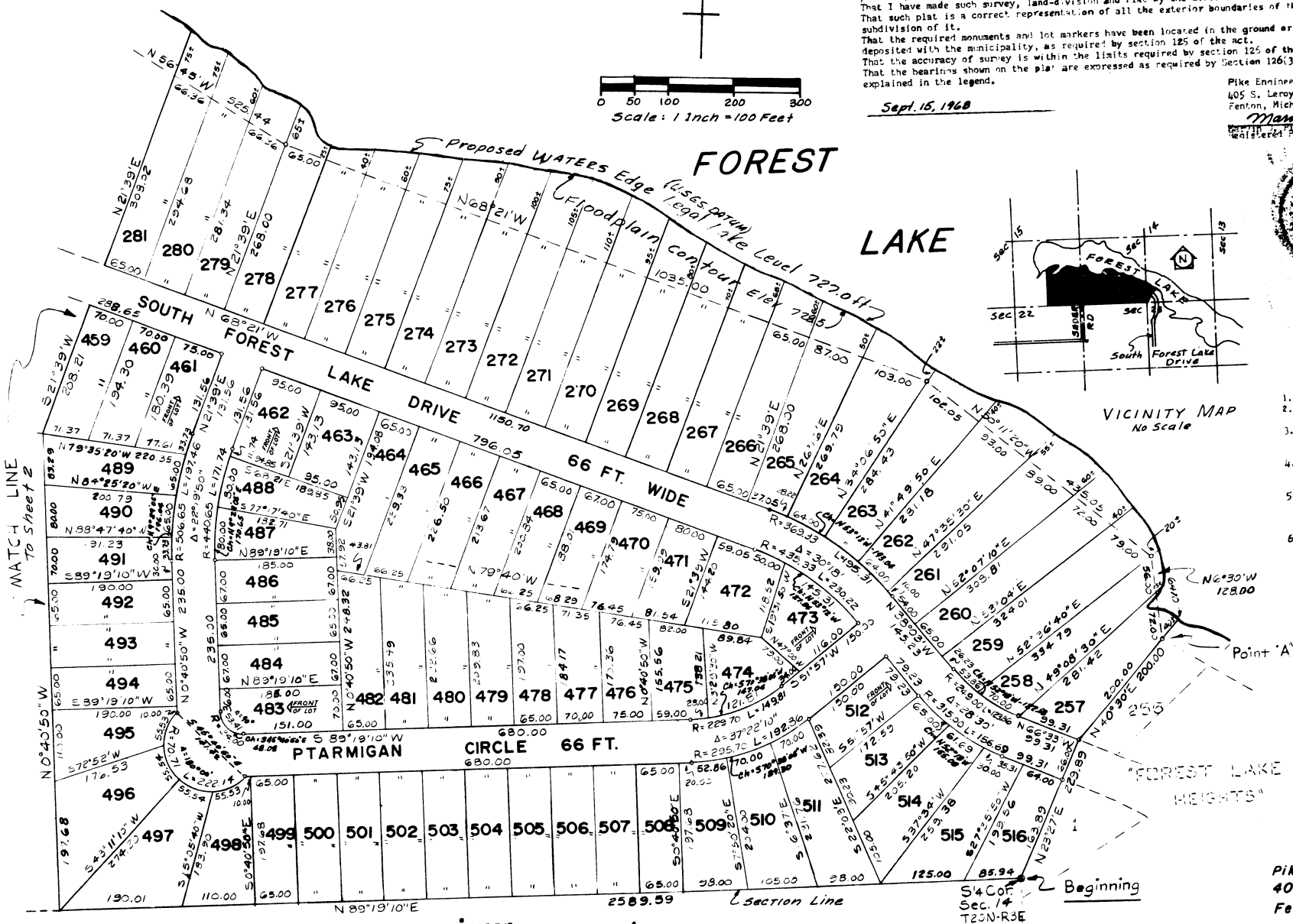
I, Marvin D. Fike, surveyor, certify: That I have surveyed, divided and mapped the land shown on this plat, described as follows: Forest Lake Heights No. 2, a part of the S 1/2 of Sec 14 and part of the E 1/2 of the SE 1/4 of Sec 15, T20N, R3E, Moffatt Township, Arenac County, Michigan is described as beginning at the S 1/4 Corner of said Sec 14; th along the Westerly line of "Forest Lake Heights" N 23°27'E 229.89 ft., and N 40°30'E 200.30 ft. to Point "A"; th N 40°30'E 40 ft. more or less to the westerly edge of Forest Lake; th Northwestwardly along said water's edge 4470 ft. more or less; th S 0°55'10"W 40 ft. more or less to Point "B"; said point on an intermediate traverse N 69°10'W 128.00 ft., and S 89°00'00"W 435.05 ft., and N 69°21'W 1035.00 ft., and N 59°45'W 525.44 ft., and S 51°05'W 460.00 ft., and S 66°30'W 500.84 ft., and N 11°00'W 355.07 ft., N 82°40'W 600.00 ft., and S 45°50'W 269.90 ft., and S 66°30'W 500.84 ft., and N 57°50'30"W 101.58 ft., and North 124.95 ft., and N 69°10'E 400.00 ft., and N 12°30'W 165 ft., and S 78°01'40"W 503.17 ft. from Point "A"; th S 0°55'10"W 1566.51 ft. th along the section line N 89°19'10"E 2589.59 ft. to the point 1316.95 ft. to the SW Corner of said Sec 14; th along the Section line N 89°19'10"E 2589.59 ft. to the point of beginning. This plat contains 260 lots numbered 257 thru 516 both inclusive and an outlot and three private parks named Blue Heron Park, Cotton Hill Park, and Sand Hill Crane Park. That I have made such survey, land-division and Plat by the direction of the owners of such land. That such plat is a correct representation of all the exterior boundaries of the land surveyed and the subdivision of it. That the required monuments and lot markers have been located in the ground as that surety has been deposited with the municipality, as required by section 125 of the act. That the accuracy of survey is within the limits required by section 125 of the act. That the bearings shown on the plat are expressed as required by section 126(3) of the act and as explained in the legend.

Sept. 15, 1968

Pike Engineering Co.  
405 S. Leroy St.  
Fenton, Michigan 48830  
*Marvin D. Fike*  
Registered Professional Engineer



- LEGEND
1. All dimensions are in feet.
  2. All curve dimensions are arcs.
  3. Concrete monuments have been placed at all points marked "0".
  4. Lot corners have been marked with 1/2" dia. rods 18 inches in length.
  5. Bearings were established from the recorded Plat of "Forest Lake Heights", Liber No. 3, Page 25.
  6. Water front lots extend to the proposed water's edge.



Pike Engineering Co.  
405 South Leroy St.  
Fenton, Mich. 48830

UNPLATTED