

"LAKE HURON VILLAGE ESTATES NO. 2"

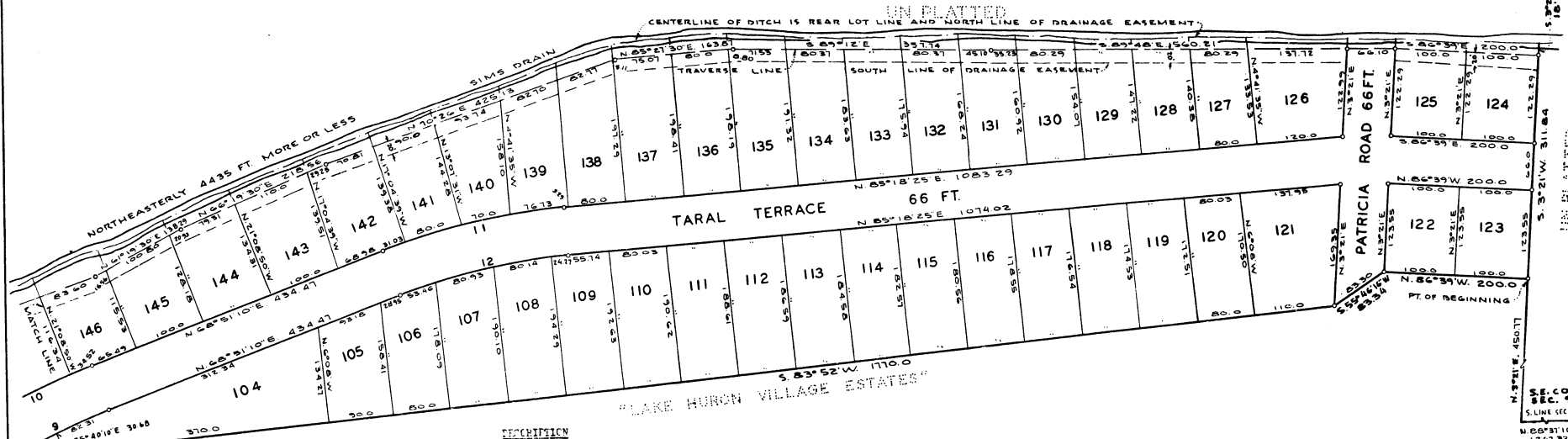
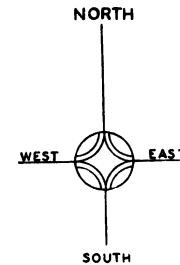
A SUBDIVISION OF PART OF THE S. $\frac{1}{2}$ OF SEC. 9 AND PART OF THE N. $\frac{1}{2}$ OF SEC. 16.
T. 19 N., R. 7 E., SIMS TWP. ARENAC CO., MICH.

100 50 0 100 200 300

SCALE: 1 INCH = 100 FEET

ALL DIMENSIONS ARE IN FEET AND DECIMALS THEREOF.
ALL CURVE DISTANCES ARE MEASURED ALONG THE ARC.
O INDICATES CONCRETE MONUMENTS SET.

NO.	RADIUS	DELTA	LENGTH	CH. BEARING	LENGTH
9	1042.98	7° 58' 30"	145.16	N. 64° 51' 59" E.	145.05
10	1108.92	7° 58' 30"	154.38	N. 64° 51' 59" E.	154.23
11	897.55	16° 27' 15"	257.76	N. 77° 04' 48" E.	256.87
12	831.95	16° 27' 15"	236.80	N. 77° 04' 48" E.	237.96



DESCRIPTION

The land embraced in the annexed plat of "LAKE HURON VILLAGE ESTATES NO. 2" a subdivision of part of the S. $\frac{1}{2}$ of Sec. 9 and part of the N. $\frac{1}{2}$ of Sec. 16, T. 19 N., R. 7 E., Sims Twp., Arenac Co., Mich. is described as beginning at the N. E. corner of "Lake Huron Village Estates" subdivision distant N. 88° 37' 10" W. along the South line of said Sec. 9 a distance of 1267.33 ft. and N. 3° 21' E. 450.77 ft. from the S. E. corner of said Sec. 9, thence along the boundary of said subdivision the following six courses and distances N. 86° 39' W. 200.0 ft. and S. 55° 46' 16" W. 83.74 ft. and S. 83° 52' W. 1770.0 ft. and S. 6° 08' E. 195.0 ft. and S. 29° 21' 54" W. 73.79 ft. and S. 6° 08' E. 416.90 ft. to the centerline of 66 ft. wide Michigan Ave., thence along said centerline S. 85° 55' W. 89.64 ft., thence S. 83° 42' 15" W. 711.75 ft., thence S. 82° 46' 10" W. 504.80 ft., thence S. 80° 55' W. 828.47 ft., thence N. 4° 37' 31" E. 100.17 ft. to a point of traverse along Sims Drain, said point later referred to as first mentioned point in said traverse, thence continuing N. 4° 37' 31" E. 25 ft. to the centerline of said Sims Drain, thence in a northeasterly direction along the centerline of said Sims Drain 4435 ft. more or less to a point, thence S. 3° 21' W. 18 ft. to a point of traverse along said Sims Drain and said point located N. 68° 59' E. 224.96 ft. and N. 43° 44' 30' E. 621.57 ft. and N. 70° 44' E. 250.91 ft. and N. 66° 39' E. 349.84 ft. and N. 70° 28' E. 306.13 ft. and N. 61° 19' 30" E. 138.29 ft. and N. 66° 19' 30" E. 218.56 ft. and N. 70° 26' E. 475.13 ft. and N. 85° 27' 30" E. 163.87 ft. and S. 89° 12' E. 357.74 ft. and S. 89° 48' E. 566.21 ft. and S. 86° 39' E. 200.0 ft. from the first mentioned point in said traverse, thence continuing S. 3° 21' W. 311.84 ft. to the point of beginning. This plat contains 103 lots numbered 67 thru 169 both inclusive.

ACKNOWLEDGMENT

STATE OF MICHIGAN) ss
COUNTY OF ARENAC)

On this 13th day of August, 1968, before me, a Notary Public in and for said County, appeared Benjamin G. Buttrick and Kenneth E. Ralph, to me personally known who being each by me duly sworn did say that they are the President and Secretary, respectively, of Ben Franklin Co., a Michigan corporation, and said instrument was signed in behalf of said corporation by authority of its Board of Directors and the said Benjamin G. Buttrick and Kenneth E. Ralph acknowledged said instrument to be the free act and deed of said corporation.

Dorothy B. Franklin
DOROTHY B. FRANKLIN
Notary Public, Arenac County, Michigan
My commission expires 6-15-70

Plat approved pursuant to provisions of Act 172 of P. A. of 1929, as amended, this 11th day of October 1968

ARENAC COUNTY PLAT BOARD

Avis Black
Avis Black, Chairman-Register of Deeds
Douglas C. Black
Douglas C. Black, County Clerk
Ross A. Ferrin
Ross A. Ferrin, County Drain Commission
Charles Dittember
Charles Dittember, County Drain Commission
Michael Pavella
Michael Pavella, County Drain Commission
Dorothy B. Smith
Dorothy B. Smith, Deputy Treasurer
By: *Dorothy B. Smith*, Deputy Treasurer

ARENAC COUNTY TREASURER'S CERTIFICATE

No. _____ Standish, Michigan September 18, 1968

I HEREBY CERTIFY that there are no TAX LIENS or TITLES held by the State or any individual against the within description, and all TAXES on same are paid for five years previous to the date of this instrument, as appears by the records in this office except as stated.

By: *Harry McCreedy*, County Treasurer
Sec. 195, Act 206 - 1893 An. Am.

APPROVED THIS 16th DAY OF September A.D. 1968

Board of County Road Commissioners of the County of Arenac, State of Michigan

Ross A. Ferrin
Ross A. Ferrin, Chairman
Charles Dittember
Charles Dittember, Member
Michael Pavella
Michael Pavella, Member

EXAMINED AND APPROVED
Date _____

ALLISON GREEN
STATE TREASURER
By: *Richard E. Lenz*, Plat Examiner

SURVEYOR'S CERTIFICATE

I hereby certify that the plat hereon delineated is a correct one and that permanent metal monuments consisting of iron rods at least one half inch in diameter and thirty-six inches in length encased in concrete cylinder at least four inches in diameter and thirty-six inches in length have been placed at all points marked thus "o" as thereon shown at all angles in the boundary of the plat, at the intersection of lines of streets, and at the intersection of the lines of streets with the boundaries of the plat as shown on said plat.

PREPARED AND DRAFTED BY:

Bernard Feldhauser
Bernard Feldhauser
5617 Dixie Highway
Waterford, Michigan 48095
Registered Land Surveyor
No. 10185

