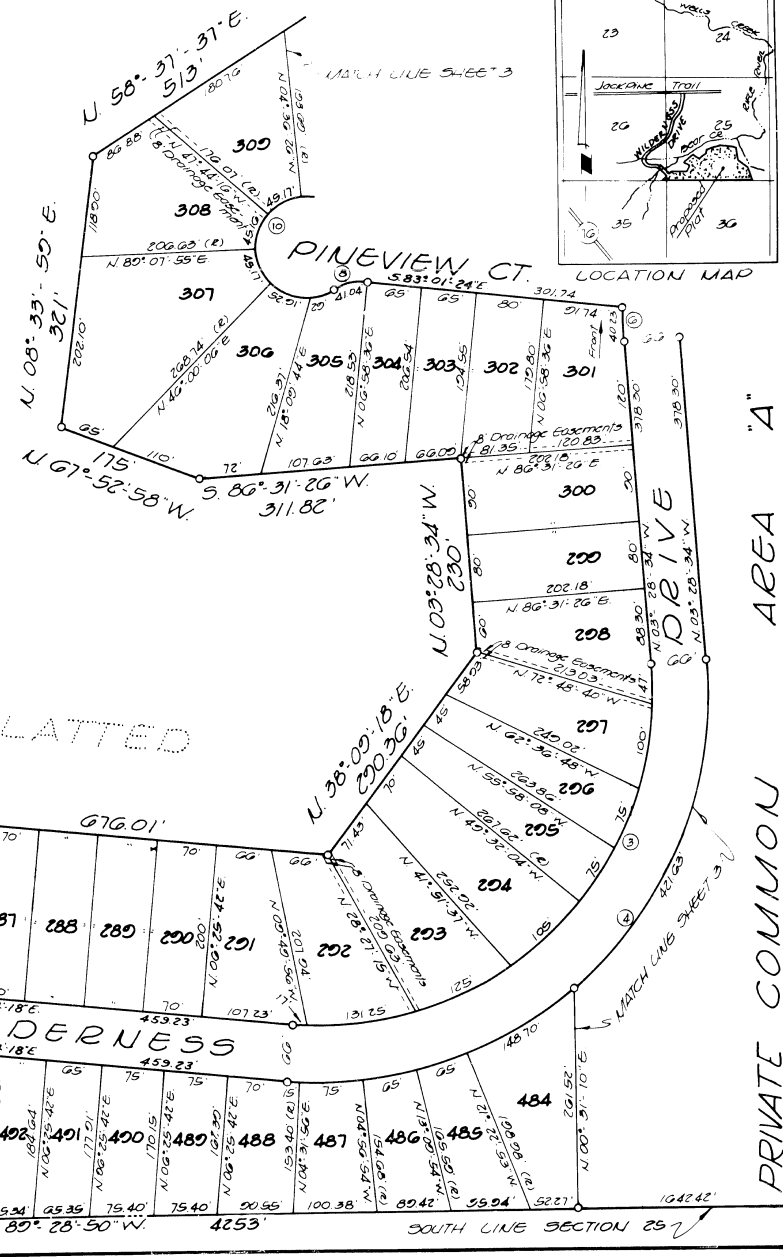
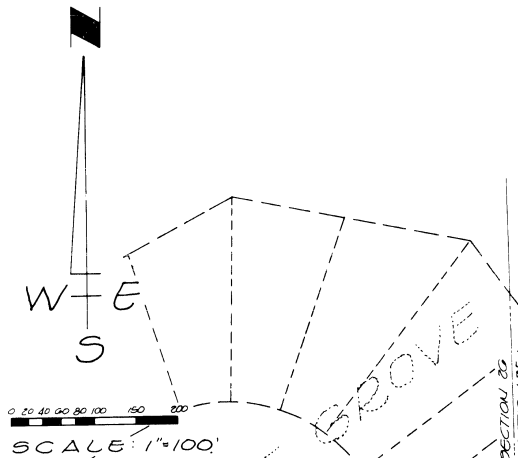
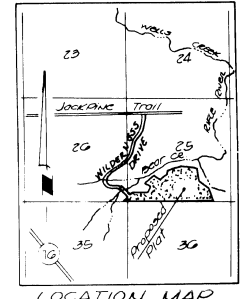


# FOREST GROVE NO. 2

BEING A SUBDIVISION PART OF THE SOUTHEAST 1/4, THE SOUTHWEST 1/4 AND THE NORTHWEST 1/4 OF SEC 25 AND THE SOUTHEAST 1/4 OF SEC 26, TOWN 20 NORTH, RANGE 3 EAST, MOFFATT TOWNSHIP, ARENAC COUNTY, MICHIGAN

CURVE NO	RADIUS	DELTA	CHORD	CHORD BEARING
1	389.41	51° 28' 05"	511.84'	N 57° 50' 16" W
2	688.41	51° 28' 05"	500.15'	N 57° 50' 16" W
3	387.26	20° 54' 16"	522.00'	S 46° 28' 34" W
4	453.26	20° 54' 16"	623.25'	S 46° 28' 34" W
8	60.00	30° 11' 42"	40.25'	N 77° 22' 45" E
10	60.00	258° 23' 24"	23.00'	N 06° 58' 36" E
6	401.50	05° 44' 22"	40.21'	N 00° 36' 24" N



FOREST GROVE

### LEGEND

- 1) All dimensions are in feet. All curvilinear dimensions shown are measured along arc
- 2) Concrete monuments are set at all points shown thus:
- 3) Iron pipes 1/2" and larger and 18" and longer are set at all other lot corners
- 4) The bearings shown on this plat are in relation to recorded "FOREST GROVE" as recorded in liber 4 of plats on pages 10-14.

PRIVATE COMMON AREA "A"