

"WOODS VIEW"

A SUBDIVISION OF PART OF THE N. 1/2 OF SECTION 11, T. 18N., R. 4E.,
CITY OF STANDISH, ARENAC COUNTY, MICHIGAN.

LEGEND

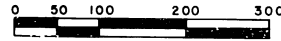
ALL DIMENSIONS ARE SHOWN IN FEET

THE SYMBOL O INDICATES A CONCRETE MONUMENT

ALL LOT MARKERS ARE IRON RODS 18" LONG AND 1/2" IN DIAMETER

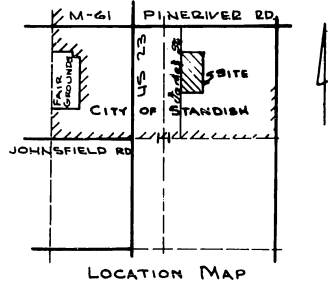
BEARINGS ARE IN RELATION TO "WHIPPLE'S ADDITION TO STANDISH" AS RECORDED

IN LIBER 1, PAGE 23 OF ARENAC COUNTY RECORDS



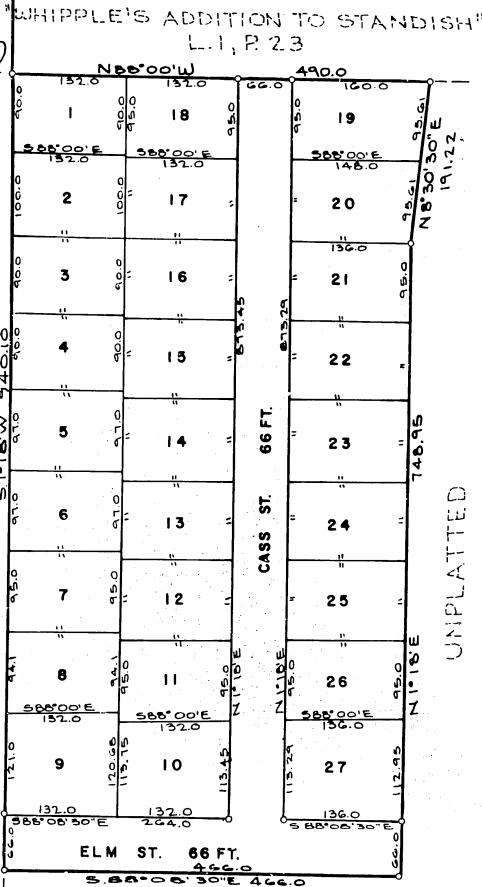
SCALE 1 INCH = 100 FEET

FELDBAUSER ASSOCIATES INC.
5775 DIXIE HWY.
WATERFORD, MICHIGAN 48095



N. 1/4 COR. SEC. 11
T. 18N., R. 4E.
S88°00'E 565.0
SECTION LINE

POINT OF BEGINNING



UNPLATTED

"FOREST PARK SUB"
L2, P. 48

JAMES ST. 66 FT.

CASS ST. 66 FT.

ELM ST. 66 FT.

UNPLATTED



Certified true copy of the plat
recorded Sept. 7, 1971
at 9 A.M., in Liber 4
of plats on page 31-33
by Arline Hood, S/S
Register of Deeds.

Allison Green
ALLISON GREEN
STATE TREASURER
By Richard E. Lomax
Richard E. Lomax - Plat Examiner
Date Sept. 10, 1971

52849