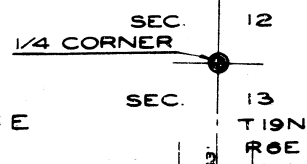


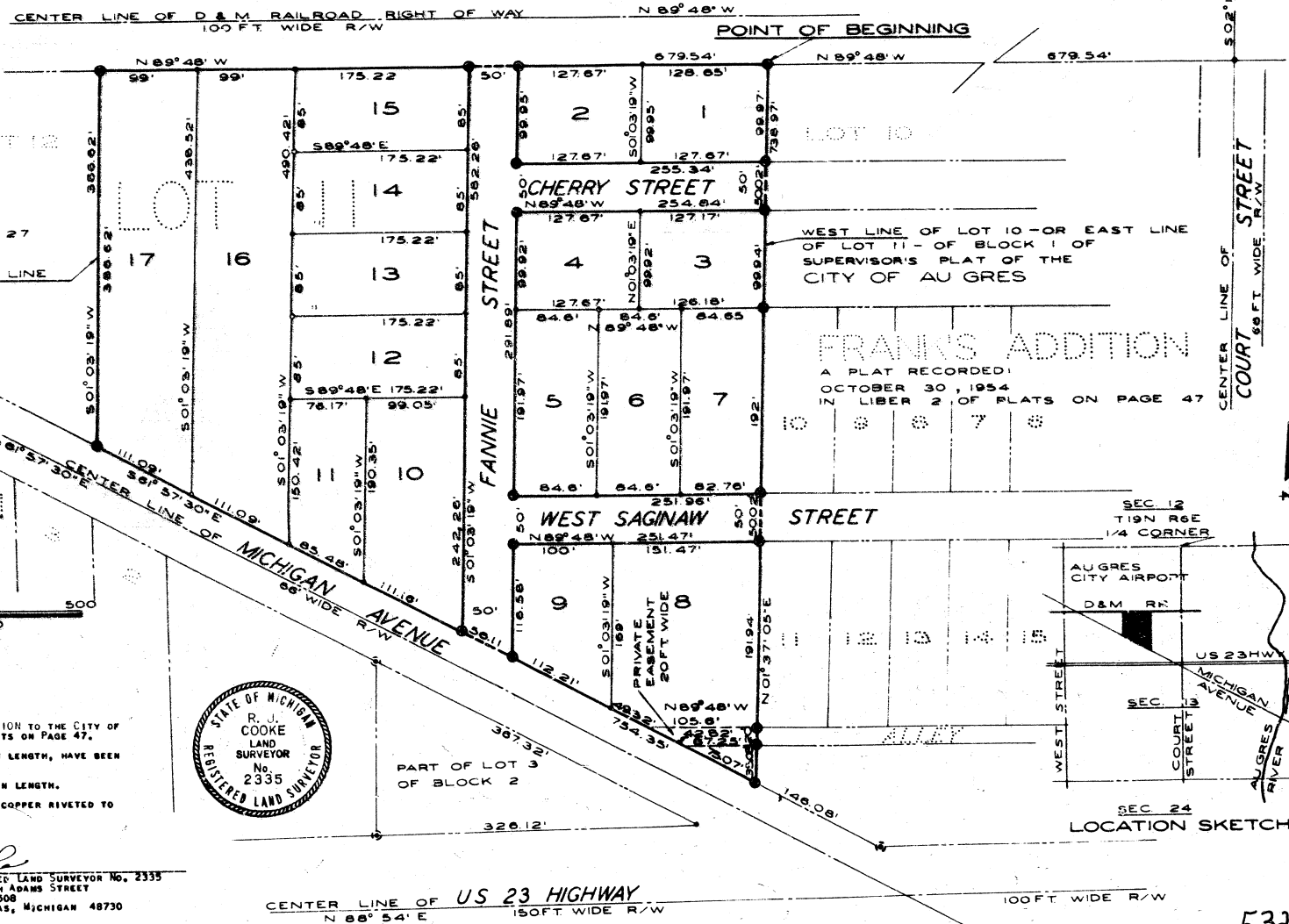


MC CREADY GARDENS

A SUBDIVISION OF PART OF THE SE1/4 OF THE NW1/4 OF SECTION 13 T19N R6E
CITY OF AU GRES ARENAC COUNTY, MICHIGAN.



LOT 6 AU GRES CITY AIRPORT LOT 7



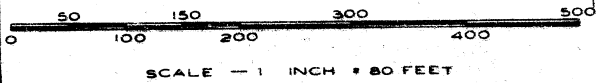
SUPERVISOR'S PLAT
OF THE CITY OF AU GRES
A PLAT RECORDED:
DECEMBER 4, 1906
IN LIBER 1 OF PLATS ON PAGE 27

EAST LINE OF LOT 12 - OR WEST LINE
OF LOT 11 - OF BLOCK 1 OF
SUPERVISOR'S PLAT OF THE
CITY OF AU GRES

WEST LINE OF LOT 10 - OR EAST LINE
OF LOT 11 - OF BLOCK 1 OF
SUPERVISOR'S PLAT OF THE
CITY OF AU GRES

FRANK'S ADDITION
A PLAT RECORDED:
OCTOBER 30, 1954
IN LIBER 2 OF PLATS ON PAGE 47

BEAUCH'S ADDITION
A PLAT RECORDED:
NOVEMBER 5, 1948
IN LIBER 2 OF PLATS ON PAGE 17



LEGEND

1. ALL DIMENSIONS ARE GIVEN IN FEET
2. BEARINGS ARE REFERRED TO BEARINGS AS SHOWN ON FRANK'S ADDITION TO THE CITY OF AU GRES, A PLAT RECORDED OCTOBER 30, 1954 IN LIBER 2 OF PLATS ON PAGE 47.
3. REINFORCED CONCRETE MONUMENTS, 4 INCHES SQUARE BY 3 FEET IN LENGTH, HAVE BEEN PLACED IN THE GROUND AT POINTS MARKED
4. LOT CORNERS MARKED THUS \circ ARE 1 INCH IRON PIPE 36 INCHES IN LENGTH.
5. LOT CORNERS MARKED THUS \bullet ARE 1/2 INCH STAMPED BRASS DISCS COPPER RIVETED TO 1/2 INCH PIPE 30 TO 36 INCHES IN LENGTH.



SURVEY AND PLAT BY R. J. COOKE
REGISTERED LAND SURVEYOR No. 2335
210 NORTH ADAMS STREET
P O Box 308
EAST TAWAS, MICHIGAN 48730

CENTER LINE OF US 23 HIGHWAY
N 88° 54' E 150 FT. WIDE R/W

53232