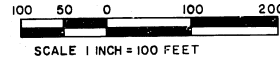


# "SEVEN SEASONS ESTATES"

A SUBDIVISION OF PART OF GOVERNMENT LOTS 2 AND 3 AND PART OF THE N.1/2 OF SEC.1, T.18N.,R.6E., AND PART OF THE S.E.1/4 OF THE S.W.1/4 OF SEC.36, T.19N., R.6E., AU GRES TOWNSHIP, ARENAC COUNTY, MICHIGAN.

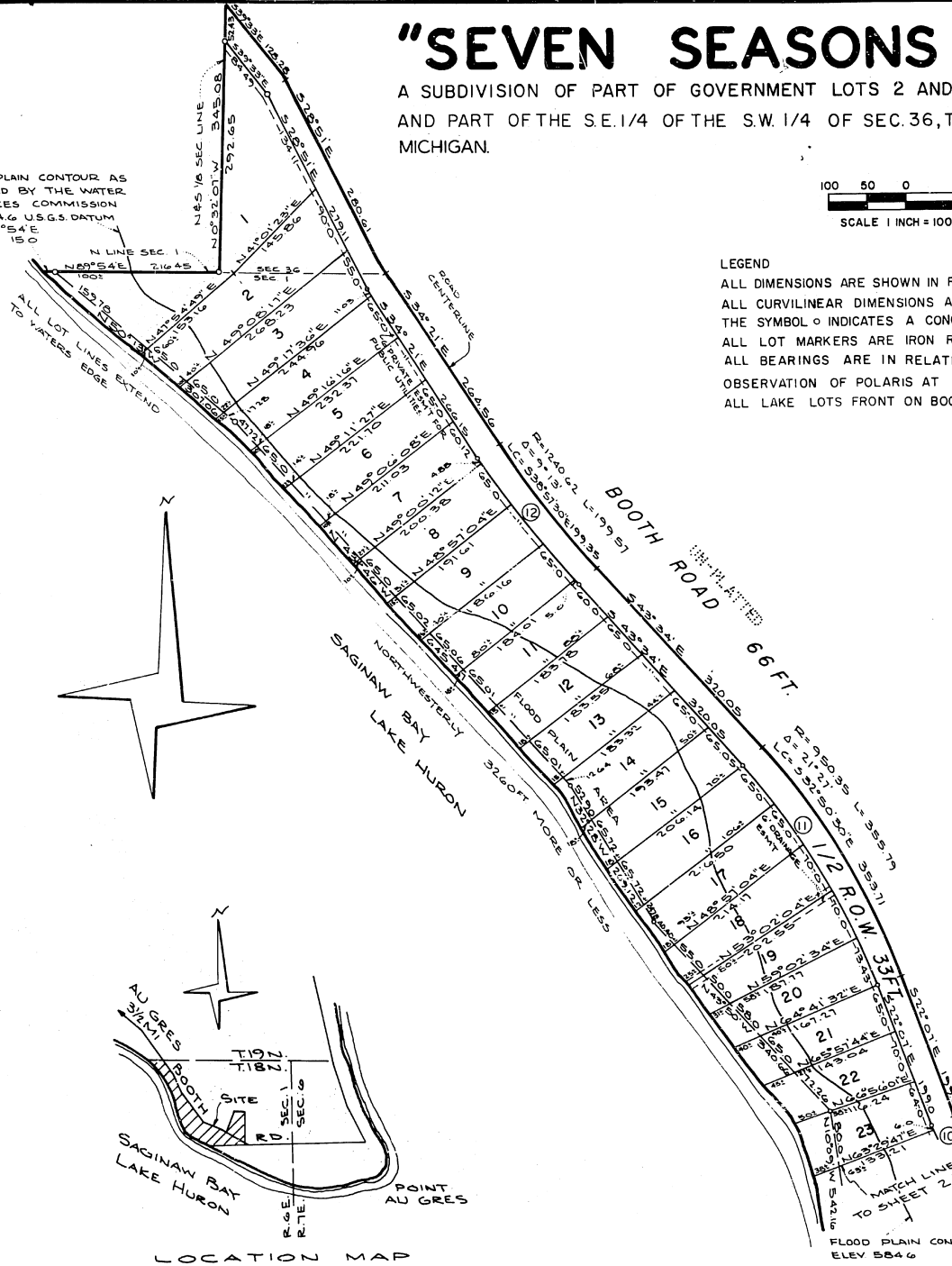
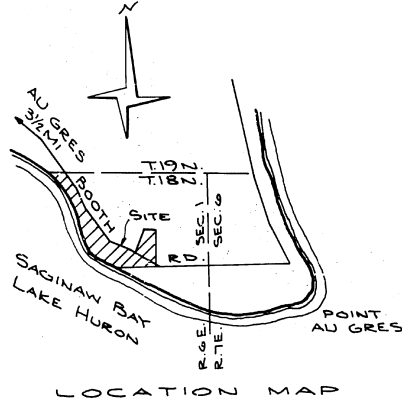
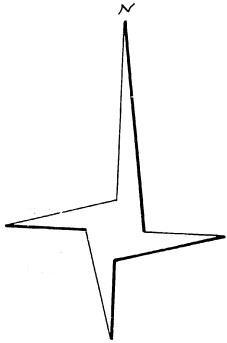


**LEGEND**

- ALL DIMENSIONS ARE SHOWN IN FEET
- ALL CURVILINEAR DIMENSIONS ARE SHOWN ALONG THE ARC.
- THE SYMBOL ○ INDICATES A CONCRETE MONUMENT
- ALL LOT MARKERS ARE IRON RODS 18" LONG AND 1/2" IN DIAMETER
- ALL BEARINGS ARE IN RELATION TO THE TRUE MERIDIAN BY OBSERVATION OF POLARIS AT ELONGATION.
- ALL LAKE LOTS FRONT ON BOOTH ROAD.

FLOOD PLAIN CONTOUR AS APPROVED BY THE WATER RESOURCES COMMISSION ELEV 584.6 U.S.G.S. DATUM N49°54'E 15.0

ALL LOT LINES EXTEND TO WATER'S EDGE



CURVE DATA					
NO.	RADIUS	DELTA	LENGTH	CORD BEARING	LENGTH
10	1382.97	8° 28' 00"	204.51	N 26° 21' E	204.33
11	917.35	21° 27' 00"	343.43	S 32° 50' 30" E	339.59
12	1273.62	9° 13' 00"	204.88	N 38° 57' 30" W	199.35

Certified true copy of recording plat.  
 By Richard C. Loman  
 Richard E. Loman, PLS  
 Date November 2, 1973

**COUNTY TREASURER'S CERTIFICATE**

The records in my office show no unpaid taxes or special assessments for the five years preceding 2-13-73, involving the lands included in this plat.

Harry M. Cready  
 HARRY M. CREADY  
 Treasurer  
 ARENAC County

This plat is subject to restrictions as required by Act 288 of 1967, as amended on certain lots with respect to the requirements of the Michigan Department of Natural Resources and/or the Michigan Department of Public Health, which are recorded in Liber 163, Page 141-144, of records of Arenac County.

FELDBAUSER ASSOCIATES INC.  
 5775 DIXIE HWY  
 WATERFORD, MICHIGAN

**53939**